



# 2018 End of Year Report

## Johnson County Weed and Pest Control District Mission and Policy

The Johnson County Weed & Pest is committed to providing leadership and education for the long term management of noxious weeds & pests through prevention, biological, cultural, mechanical and chemical controls. We are dedicated to decreasing the impacts of invasive species on native plant and animal communities, private and public lands, and local economies. The Johnson County Weed & Pest strives to have effective programs for the management of noxious weeds and pests by promoting and coordinating management and control through integrated pest management techniques, cooperation with landowners, agencies, organizations, and by providing technical expertise and educational opportunities to all within the county.

- Prairie dogs - page 2
- Field Certifications - page 2
- County Roads - page 2
- Comped weeds - page 2
- Wy DOT - page 3
- Sprayer use - page 3
- Coupons - page 4
- Time tracking - page 5
- Application Coverages Map - page 6
- Program percentages & dollars - page 7
- Private Lands - page 8
- Government Agencies- page 8

## 2018 Prairie Dog Cost Share

Units	Rodenticide	Price Each	Total Cost	District Cost	LO Cost
33	Fumitoxin	\$ 26.05	\$ 859.65	\$ 601.76	\$ 257.89
42	Rozol (25 lb)	\$ 73.25	\$ 3,076.50	\$ 2,153.55	\$ 922.95
80	Kuput-D (50 lb)	\$ 80.11	\$ 6,408.80	\$ 4,486.16	\$ 1,922.64
124	50 lb - ZP Oats	\$ 50.00	\$ 6,200.00	\$ 6,200.00	-
	2017 Rebates	\$ 5.00	\$ 23,016.00	\$ 23,016.00	-
<b>Totals</b>			<b>\$ 39,560.95</b>	<b>\$ 36,457.47</b>	<b>\$ 3,103.48</b>

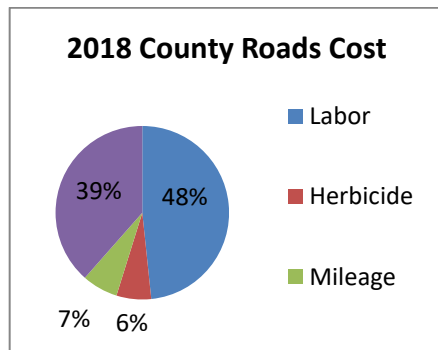
The District offers a rebate program to landowners that hire a commercial applicator to treat Prairie Dogs using ZP Oats on their private land.

## 2018 Field Certifications

Rod certified fields for 5 hay/straw producers in the County.

## 2018 County Roads

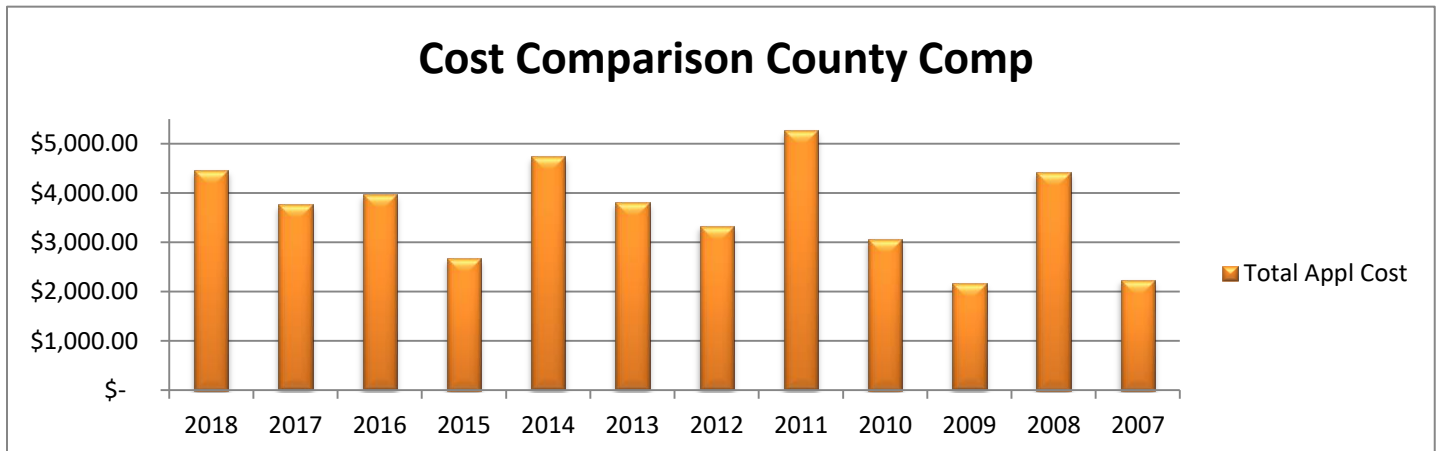
In 2018 the District treated 87.25 acres/825 miles on county roads.



2018 Co Road Cost	
Labor	\$11,087.69
Herbicide	\$1,483.67
Mileage	\$1,535.84
Equipment	\$8,826.00
<b>Total Cost</b>	<b>\$22,933.20</b>

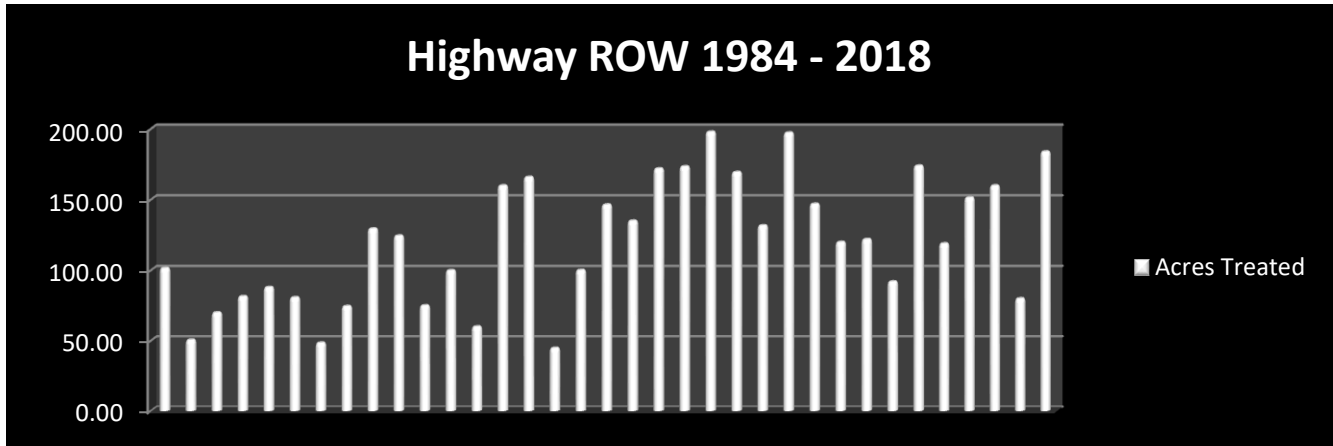
## 2018 County Comp

County Comp includes spraying of county properties, cleanup on private lands and small spray jobs that do not fit in our cost share programs.



## 2018 Wyoming Department of Transportation

The District contracts the spraying by bid of the state highway ROW in Johnson County. The State Allocation was \$ 22,960.00 for 2018. A total of 420.5 hours were spent treating 184 acres.



### 2018 Sprayer use

The District has the following equipment for use, on a donation basis.

Backpack		Boom sprayer		25 g ATV		50 gallon		150 gallon		Mosquito Fogger		Insecticide Only	
Year	Days	Year	Days	Year	Days	Year	Days	Year	Days	Year	Days	Year	Days
2009	127	2009	38	2009	93	2009	0	2009	58	2009	10	2009	29
2010	40	2010	40	2010	146	2010	35	2010	76	2010	23	2010	4
2011	289	2011	23	2011	108	2011	20	2011	24	2011	69	2011	5
2012	88	2012	56	2012	109	2012	19	2012	77	2012	33	2012	6
2013	185	2013	18	2013	259	2013	77	2013	23	2013	150	2013	2
2014	74	2014	16	2014	157	2014	3	2014	22	2014	17	2014	7
2015	195	2015	3	2015	109	2015	113	2015	81	2015	43	2015	24
2016	280	2016	40	2016	103	2016	271	2016	50	2016	6	2016	5
2017	84	2017	29	2017	23.5	2017	49	2017	21	2017	6	2017	0
2018	7	2018	36	2018	98	2018	88	2018	50	2018	11	2018	17

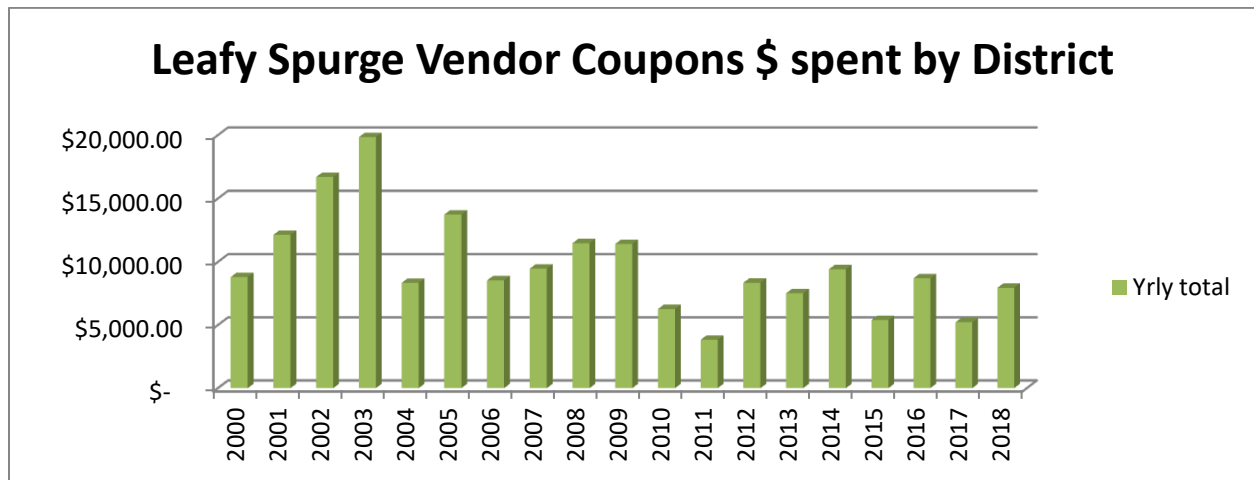
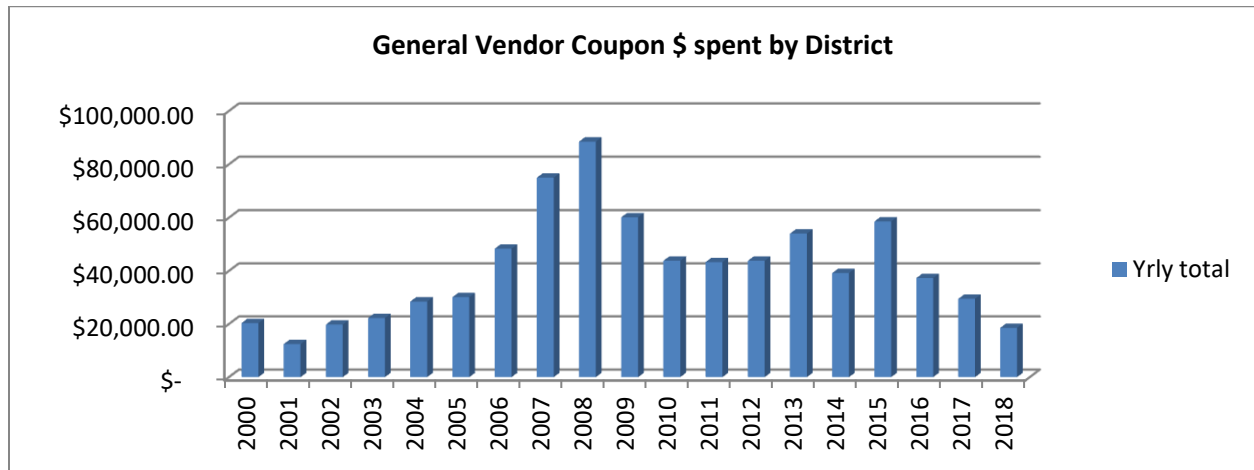
## 2018 Vendor Coupon Cost Share

*District cost share on Designated and Declared weeds is 70/30 with the exception of Leafy spurge, the District pays 100%, as allowed by statute.*

General	units	District \$
<b>2,4-D</b>	90	\$ 758.73
<b>Curtail</b>	37.5	\$ 1,276.13
<b>Escort</b>	468	\$ 847.08
<b>GlyStar Plus</b>	260	\$ 2,376.40
<b>GrazonNext</b>	182	\$ 6,027.84
<b>Milestone</b>	15	\$ 3,269.34
<b>MSM</b>	32	\$ 46.40
<b>Opti-Amine</b>	38.5	\$ 679.14
<b>Tordon</b>	102	\$ 3,119.16
<b>WeedMaster</b>	11	\$ 178.31
		<b>\$ 18,578.53</b>

Leafy Spurge	units	District \$
<b>2,4-D</b>	22.5	\$ 270.90
<b>Escort</b>	32	\$ 82.56
<b>MSM</b>	16	\$ 33.12
<b>Opti-Amine</b>	12.5	\$ 315.00
<b>Tordon</b>	166	\$ 7,247.20
		<b>\$ 7,948.78</b>

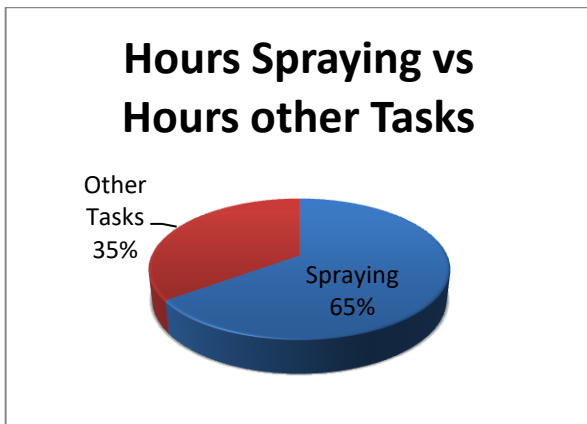
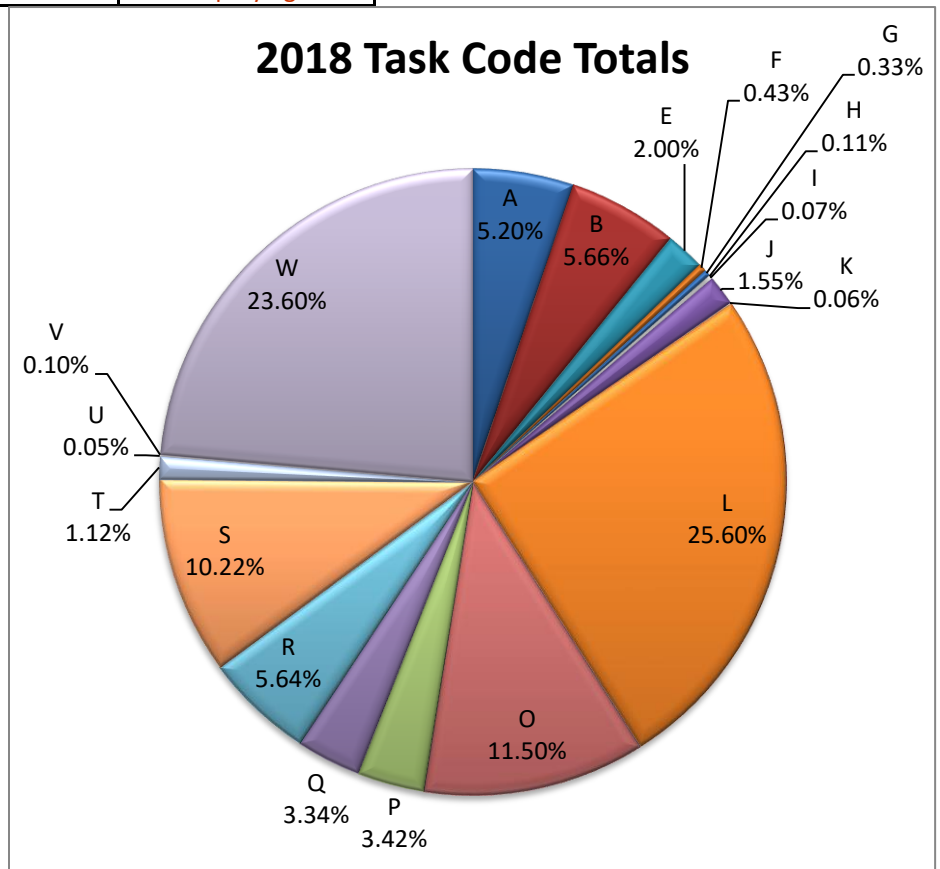
Grasshopper	units	District \$
<b>Sevin</b>	7.5	\$ 232.58



## 2018 Employees Time Spent

The District has assigned the following task codes in order to track where the employees time is spent. The graph includes all employees time. We also assign labor rates and track each task code for each labor rate.

Code	Task	Code	Task
A	Administrative	L	Leafy Spurge
B	Bonus and Holiday	M	Mosquito
C	County Comp Application	O	Office
D	Data Collection	P	Shop
E	Education	Q	Bookkeeping
F	Customer Relations	R	County Roads
G	GIS	S	Salt Cedar
H	Health	T	Tracking Archives
I	Incomplete day	U	BioControl release
J	Personal leave	V	Survey Salt Cedar
K	Kill Prairie Dogs	W	Weed Spraying



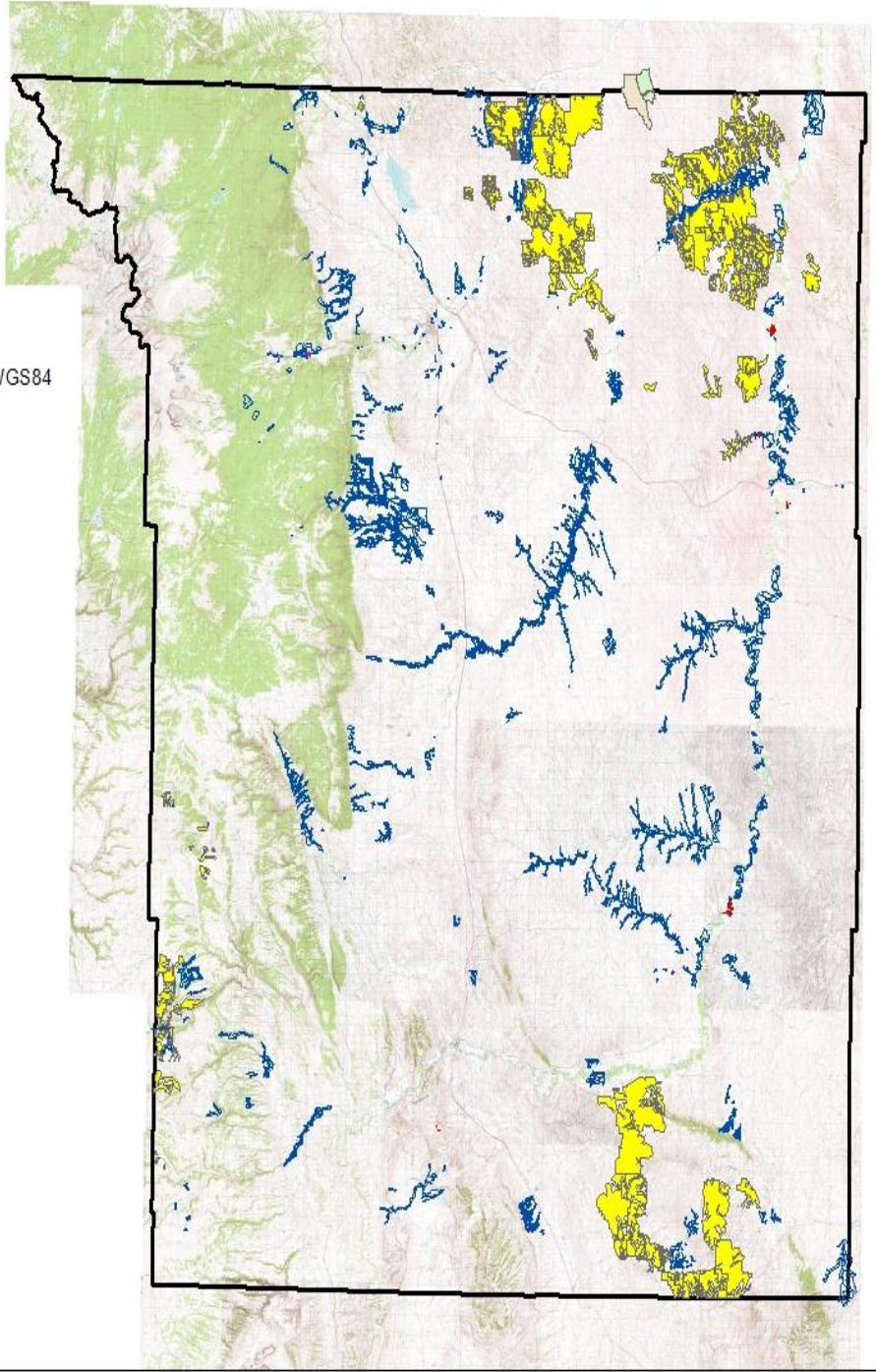
# 2018 Coverages

## Legend

- RedmondDr\_BetzRd\_geographicProjection\_WGS84
- Long Draw
- Vent\_forest501
- Ventanata
- 2018 Aerial
- 2018\_SC
- 2018\_coveragesNew

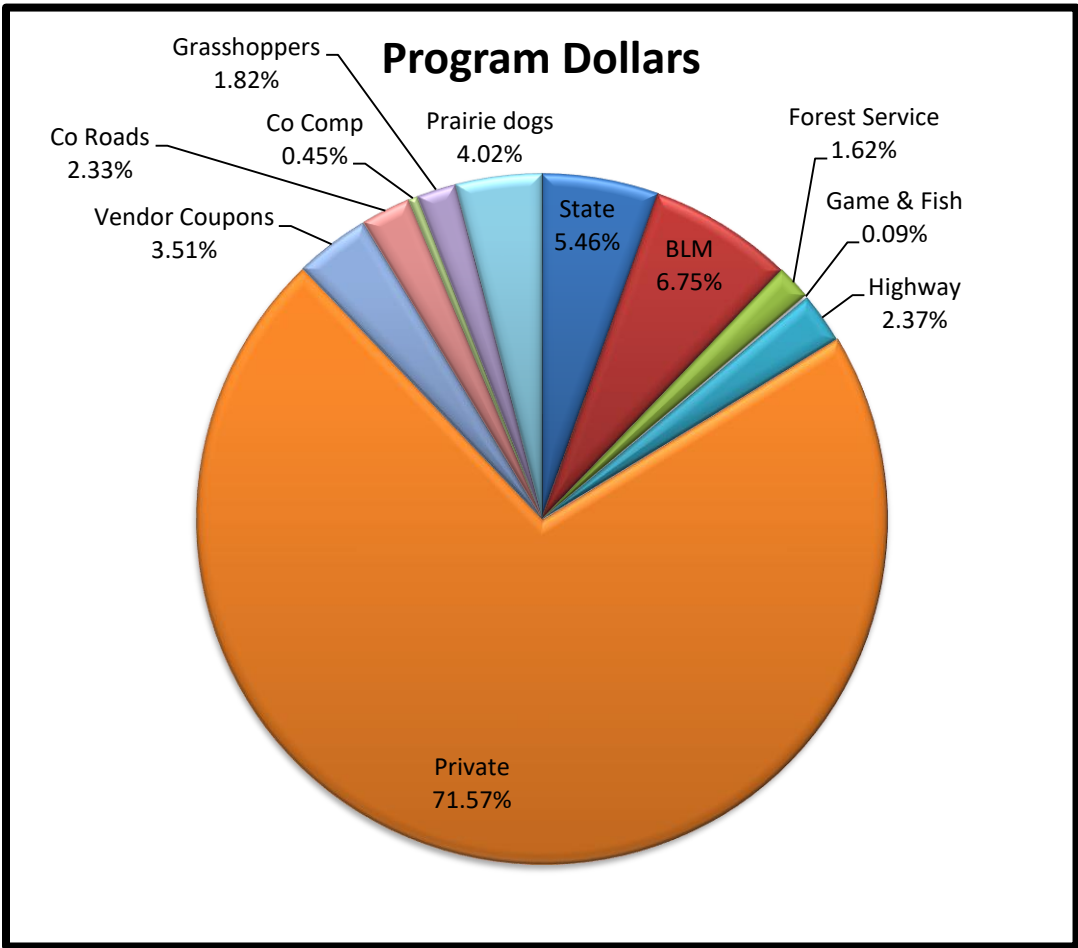
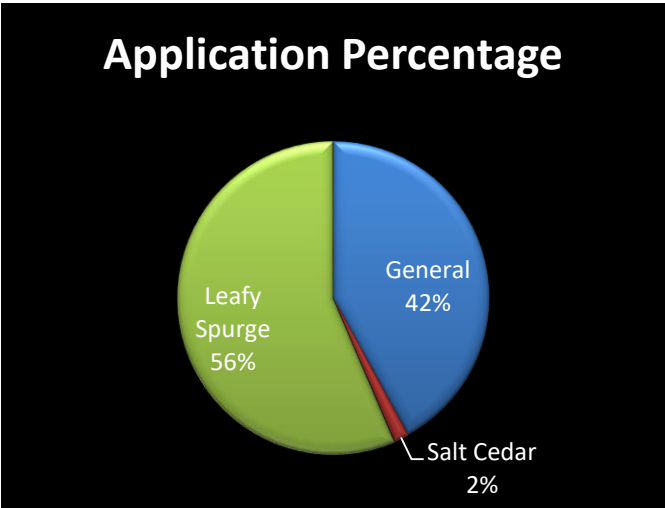
	Acre Covered	Acre Trtd
Salt Cedar	120	50
Ground	44112	3293
Aerial	97411	8752
Ventanata	130	130
<b>TOTAL</b>	<b>141,773</b>	<b>12,225</b>

Chart represents total affected acres covered and treated with District program dollars



The map shows the acres covered by the District in 2018. 494 application records were processed during the year.

The following graphs show the percentage based on acres of applicatons and program dollars.



The pie chart above represents Total Program Dollars. This includes District and match dollars.

## Private Lands

Private	acres	Labor \$	Equip \$	Herbicide \$	Total \$
General	4660	\$ 150,707.07	\$ 23,552.94	\$ 64,206.39	\$ 238,466.40
Leafy Spurge	5527.85	\$ 315,061.07	\$ 17,841.58	\$ 71,486.52	\$ 404,389.17
Salt Cedar	187.7	\$ 14,947.03	\$ 6,061.68	\$ 16,396.01	\$ 37,404.72
<b>Totals</b>	10375.6	\$ 480,715.17	\$ 47,456.20	\$ 152,088.92	\$ 680,260.29

## Government Agencies

### 2018 Bureau of Land Management

(\$ 25,918.62 over contract)

BLM	acres	Labor \$	Equip \$	Herbicide \$	Total \$
General	236.5	\$ 17,300.30	\$ 2,011.50	\$ 3,909.65	\$ 23,221.15
Salt Cedar	6.9	\$ 1,566.07	\$ 229.90	\$ 1,841.56	\$ 3,637.53
Leafy Spurge	651	\$ 32,222.48	\$ 66.46	\$ 7,275.13	\$ 39,564.07
<b>Totals</b>	894	\$ 51,088.85	\$ 2,307.86	\$ 13,026.34	\$ 66,423.05

### 2018 State Lands

(\$19,707.79 over contract)

State	acres	Labor \$	Equip \$	Herbicide \$	Total \$
Leafy Spurge	706	\$ 43,573.11	\$ 1,218.58	\$ 8,884.74	\$ 53,676.43

### 2018 Forest Service

(\$403.90 over contract)

Forest Service	acres	Labor \$	Equip \$	Herbicide \$	Total \$
General	36.7	\$ 6,184.30	\$ 526.40	\$ 1,219.92	\$ 7,930.62
Leafy Spurge	40.7	\$ 6,237.72	\$ 987.70	\$ 747.86	\$ 7,973.28
<b>Totals</b>	77	\$ 12,422.02	\$ 1,514.10	\$ 1,967.78	\$ 15,903.90

### 2018 Game & Fish

Game & Fish	acres	Labor \$	Equip \$	Herbicide \$	Total \$
General	5	\$ 765.83	\$ 42.64	\$ 104.75	\$ 913.22

**Johnson County Weed and Pest Control District**

[www.jcweedandpest.com](http://www.jcweedandpest.com)