



2017 End of Year Report

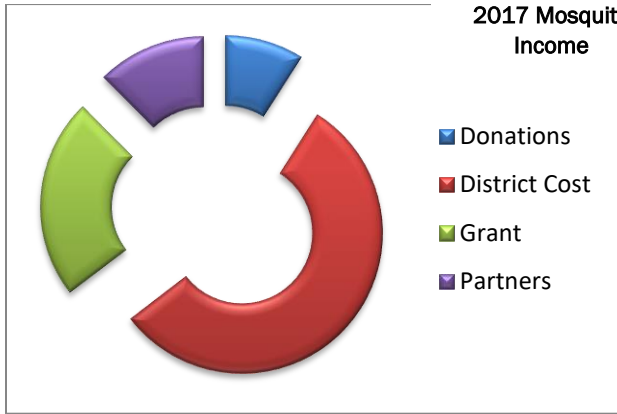
Johnson County Weed and Pest Control District Mission and Policy

The Johnson County Weed & Pest is committed to providing leadership and education for the long term management of noxious weeds & pests through prevention, biological, cultural, mechanical and chemical controls. We are dedicated to decreasing the impacts of invasive species on native plant and animal communities, private and public lands, and local economies. The Johnson County Weed & Pest strives to have effective programs for the management of noxious weeds and pests by promoting and coordinating management and control through integrated pest management techniques, cooperation with landowners, agencies, organizations, and by providing technical expertise and educational opportunities to all within the county.

- Mosquitoes - page 2
- Prairie dogs - page 2
- Field Certifications - page 2
- County Roads - page 3
- Comped weeds - page 3
- Wy DOT - page 4
- Sprayer use - page 4
- Coupons - page 5
- Time tracking - page 6
- Application Coverages Map - page 7
- Program percentages & dollars - page 8
- Private Lands - page 9
- Government Agencies- page 9

Annual Mosquito Abatement Program in the Clear Creek Drainage.

We apply larvacide throughout the summer to all mosquito infested water bodies from Buffalo to Ucross and in the City of Buffalo. The larvaciding program has been very successful over the past few years with no impact to bees and without the invasiveness of an aerial program. We do have ground fogging equipment, also, if needed and requested if an isolated adult outbreak occurs. In addition to the application in the Clear Creek drainage there is an available county wide cost share program on larvacide.



County wide mosquito program

	Income	Expense
Grant	\$12,050.00	
In Kind		
Donations	\$ 4,700.00	
Chemical		\$ 32,948.37
Labor		\$ 8,633.80
Mileage & Equip		\$ 5,732.68
Blower Fuel/Oil		\$ 147.73
Postage/supplies		\$ 174.92
Totals	\$16,750.00	\$ 47,637.50

2017 Prairie Dog Cost Share

Units	Rodenticide	Price Each	Total Cost	District Cost	LO Cost
204	Fumitoxin	\$ 23.77	\$ 4,849.08	\$ 3,394.36	\$ 1,454.72
100	Gas Cartridge	\$ 2.30	\$ 230.00		\$ 230.00
125	Rozol (25 lb)	\$ 69.25	\$ 8,656.25	\$ 6,059.38	\$ 2,596.87
67	Rozol (50 lb)	\$ 122.00	\$ 8,174.00	\$ 5,721.80	\$ 2,452.20
81	Rozol (50 lb)	\$ 123.89	\$ 10,035.09	\$ 7,024.56	\$ 3,010.53
40	Kuput-D (50 lb)	\$ 80.11	\$ 3,204.40	\$ 2,243.08	\$ 961.32
12	33 lb - ZP Oats	\$ 33.00	\$ 396.00	\$ 396.00	
149	50 lb - ZP Oats	\$ 30.00	\$ 4,470.00	\$ 4,470.00	
1222.5	2015 Rebates	\$ 5.00	\$ 6,112.50	\$ 6,112.50	
6859.1	2016 Rebates	\$ 5.00	\$ 34,295.50	\$ 34,295.50	
	Totals		\$ 80,422.82	\$ 69,717.18	\$ 10,705.64

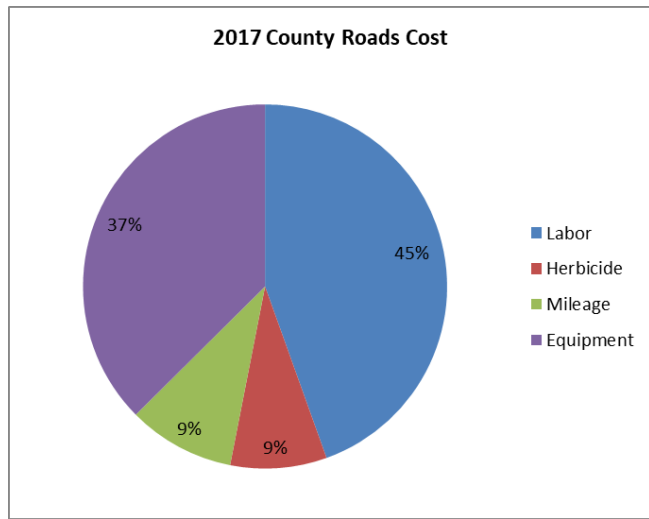
The District offers a rebate program to landowners that hire a commercial applicator to treat Prairie Dogs using ZP Oats on their private land.

2017 Field Certifications

Rod certified fields for 9 hay/straw producers in the County totaling roughly 270 acres.

2017 County Roads

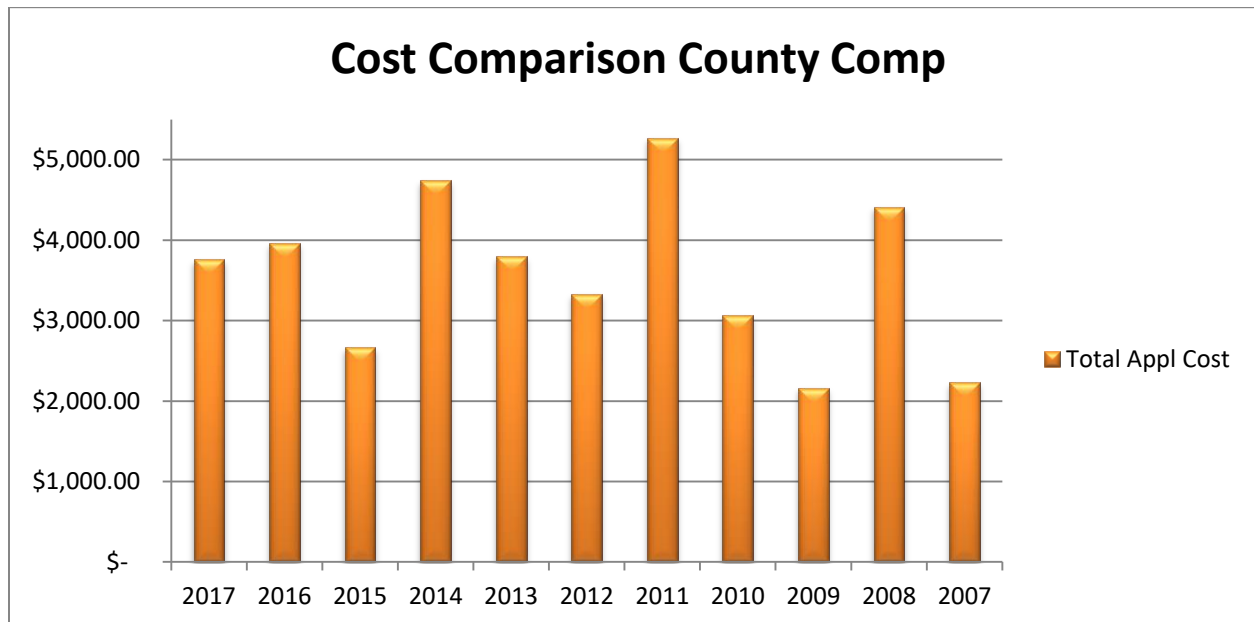
In 2017 the District treated 109.8 acres/861.67 miles on county roads.



2017 Co Road Cost	
Labor	\$10,095.67
Herbicide	\$1,942.34
Mileage	\$2,152.96
Equipment	\$8,488.40
Total Cost	\$22,679.37

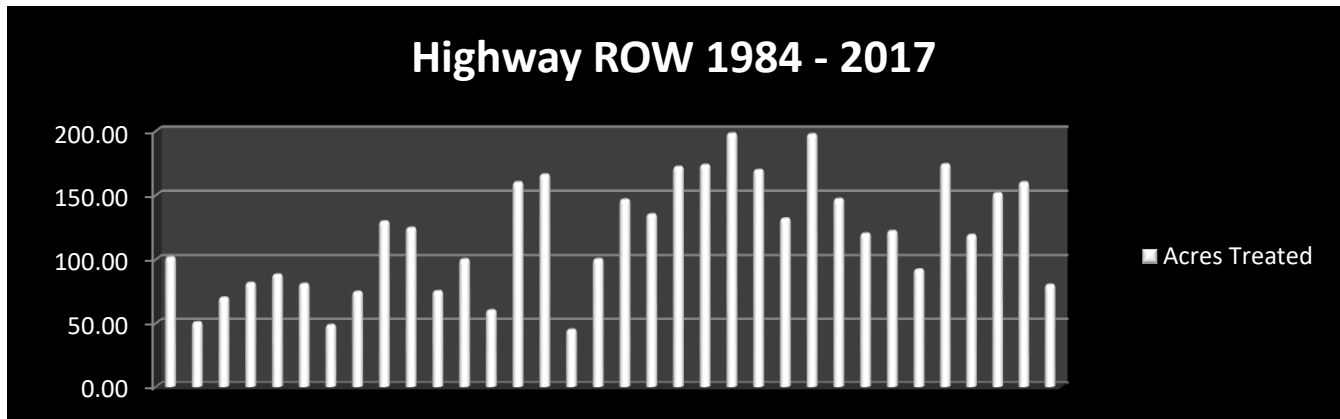
2017 County Comp

County Comp includes spraying of county properties, cleanup on private lands and small spray jobs that do not fit in our cost share programs.



2017 Wyoming Department of Transportation

The District contracts the spraying by bid of the state highway ROW in Johnson County. The State Allocation was \$ 22,960.00 for 2017. A total of 521 hours were spent treating 80 acres.



2017 Sprayer use

The District has the following equipment for use, on a donation basis.

Backpack	
Year	Days Used
2009	127
2010	40
2011	289
2012	88
2013	185
2014	74
2015	195
2016	280
2017	84

150 gallon	
Year	Days Used
2009	58
2010	76
2011	24
2012	77
2013	23
2014	22
2015	81
2016	50
2017	21

Boom sprayer	
Year	Days Used
2009	38
2010	40
2011	23
2012	56
2013	18
2014	16
2015	3
2016	40
2017	29

25 g ATV Sprayer	
Year	Days Used
2009	93
2010	146
2011	108
2012	109
2013	259
2014	157
2015	109
2016	103
2017	24

50 gallon	
Year	Days Used
2009	0
2010	35
2011	20
2012	19
2013	77
2014	3
2015	113
2016	271
2017	49

Mosquito Fogger	
Year	Days Used
2009	10
2010	23
2011	69
2012	33
2013	150
2014	17
2015	43
2016	6
2017	6

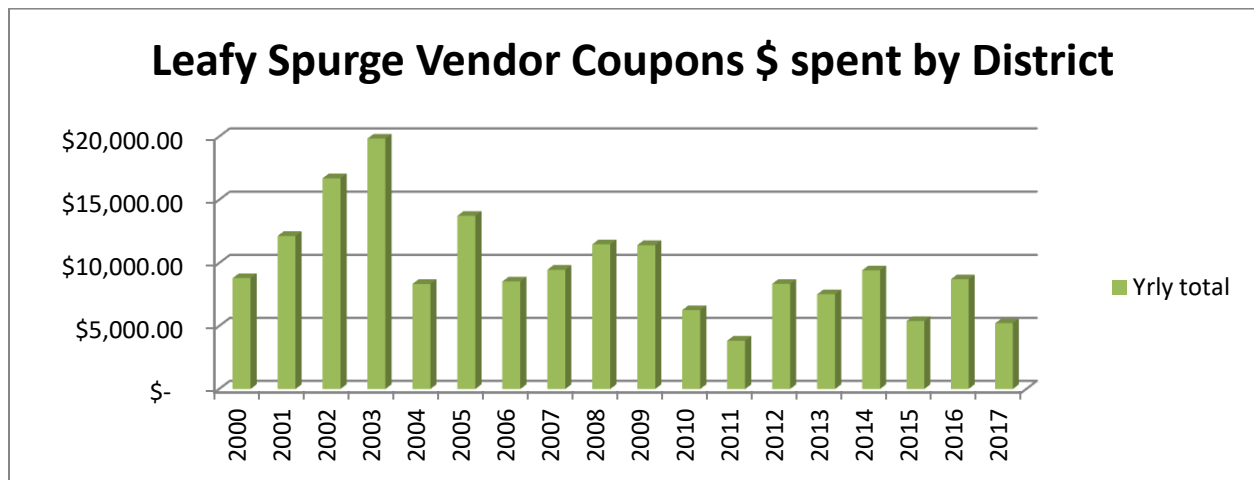
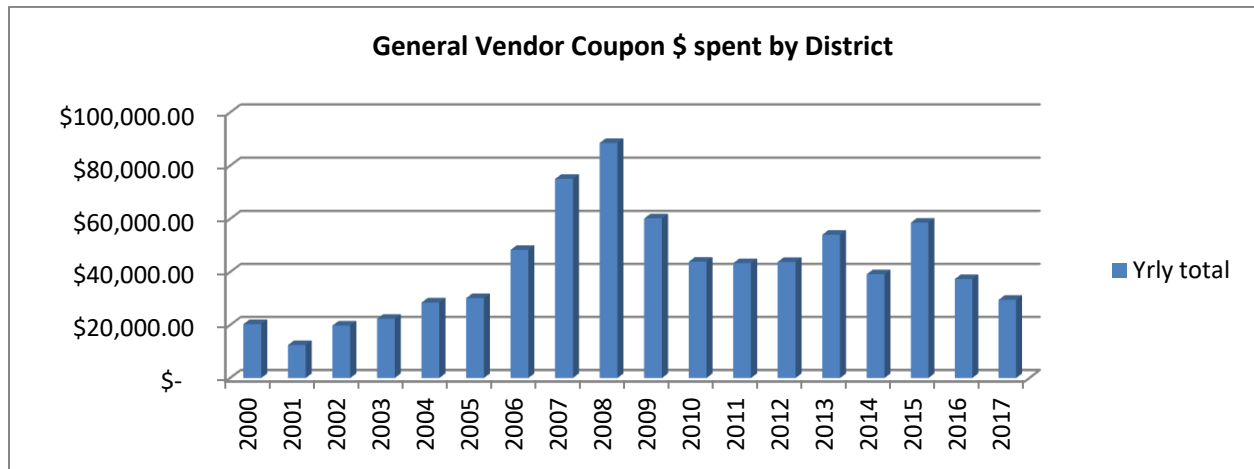
Insecticide Only	
Year	Days Used
2009	29
2010	4
2011	5
2012	6
2013	2
2014	7
2015	24
2016	5
2017	5

2017 Vendor Coupon Cost Share

District cost share on Designated and Declared weeds is 70/30 with the exception of Leafy spurge, the District pays 100%, as allowed by statute.

General	units	District \$	L.O. \$	Total \$
2,D	4	\$ 235.20	\$ 100.80	\$ 336.00
2,4-D	192.5	\$ 1,561.23	\$ 669.90	\$ 2,231.13
Curtail	77.5	\$ 2,497.83	\$ 1,070.27	\$ 3,568.10
Escort	584	\$ 1,304.10	\$ 508.08	\$ 1,812.18
GrazonNext	160	\$ 5,331.20	\$ 2,284.80	\$ 7,616.00
Impel	15	\$ 117.60	\$ 50.40	\$ 168.00
Milestone	41	\$ 8,920.49	\$ 3,746.57	\$ 12,667.06
Opensight	60	\$ 4,116.00	\$ 1,764.00	\$ 5,880.00
Opti-Amine	17.5	\$ 317.63	\$ 136.15	\$ 453.78
Remedy Ultra	5	\$ 227.35	\$ 97.45	\$ 324.80
Roundup EqI	195	\$ 1,581.47	\$ 678.60	\$ 2,260.07
Tordon	107.5	\$ 3,267.00	\$ 1,571.65	\$ 4,838.65
		\$ 29,477.10	\$ 12,678.67	\$ 42,155.77

Leafy Spurge	units	District \$	L.O. \$	Total \$
2,4-D	17.5	\$ 202.83	\$ -	\$ 202.83
DyneAmic	2.5	\$ 80.35	\$ 34.45	\$ 114.80
Imazapic	5	\$ 427.30	\$ 183.10	\$ 610.40
Tordon	92.5	\$ 4,506.60	\$ -	\$ 4,506.60
		\$ 5,217.08	\$ 217.55	\$ 5,434.63

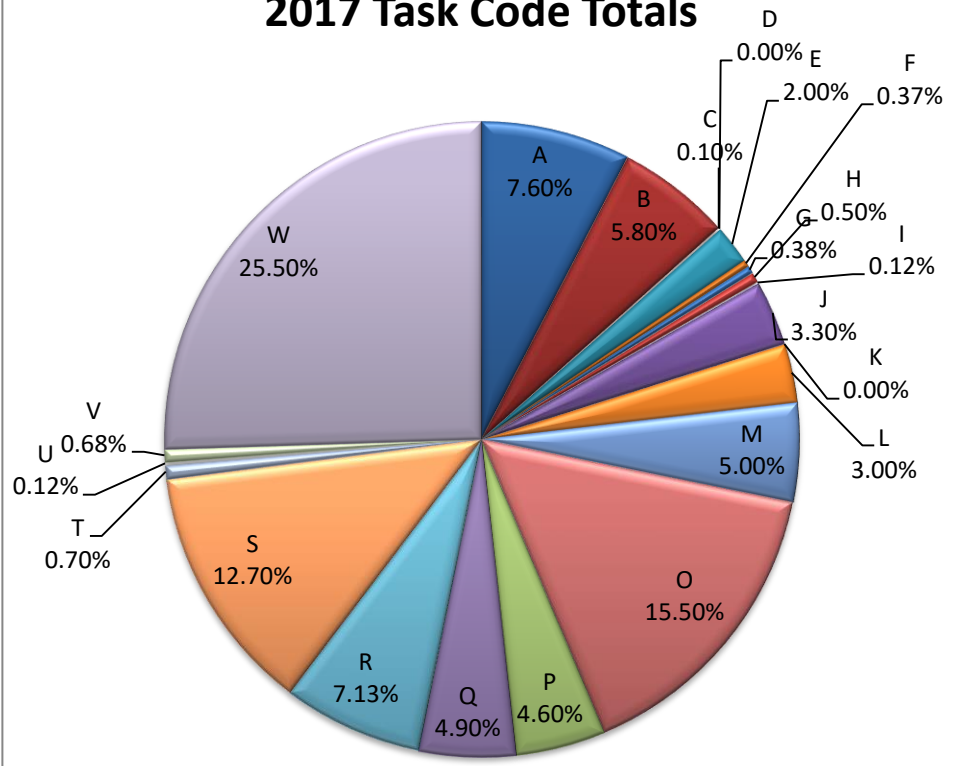


2017 Employees Time Spent

The District has assigned the following task codes in order to track where the employees time is spent. The graph includes all employees time. We also assign labor rates and track each task code for each labor rate.

Code	Task	Code	Task
A	Adminstrative	L	Leafy Spurge
B	Bonus and Holiday	M	Mosquito
C	County Comp Application	O	Office
D	Data Collection	P	Shop
E	Education	Q	Bookkeeping
F	Customer Relations	R	County Roads
G	GIS	S	Salt Cedar
H	Health	T	Tracking Archives
I	Incomplete day	U	BioControl release
J	Personal leave	V	Survey Salt Cedar
K	Kill Prairie Dogs	W	Weed Spraying

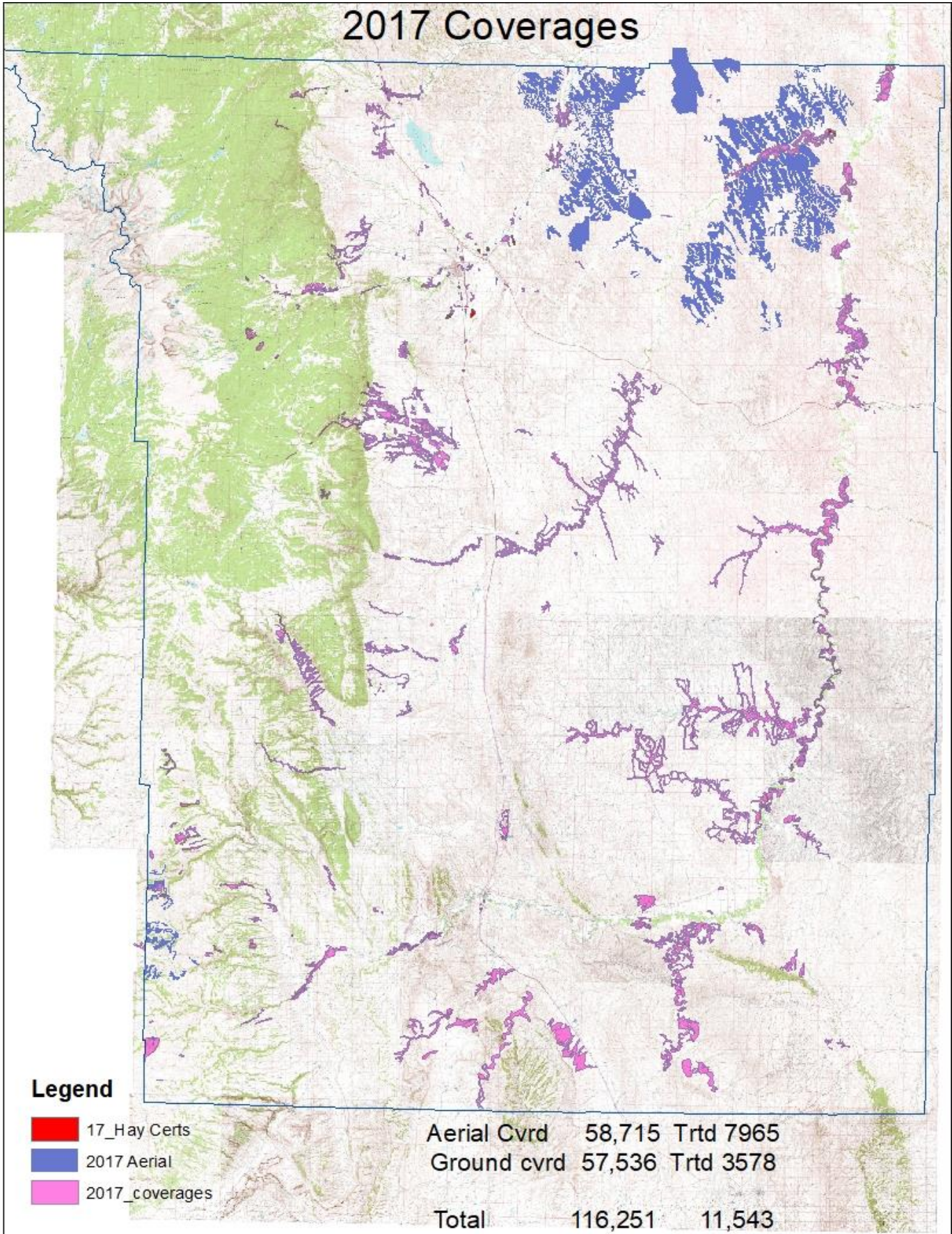
2017 Task Code Totals



Hours Spraying vs Hours other Tasks

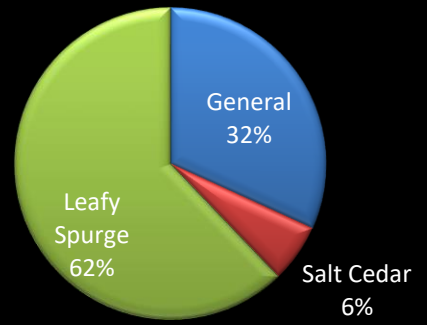


2017 Coverages

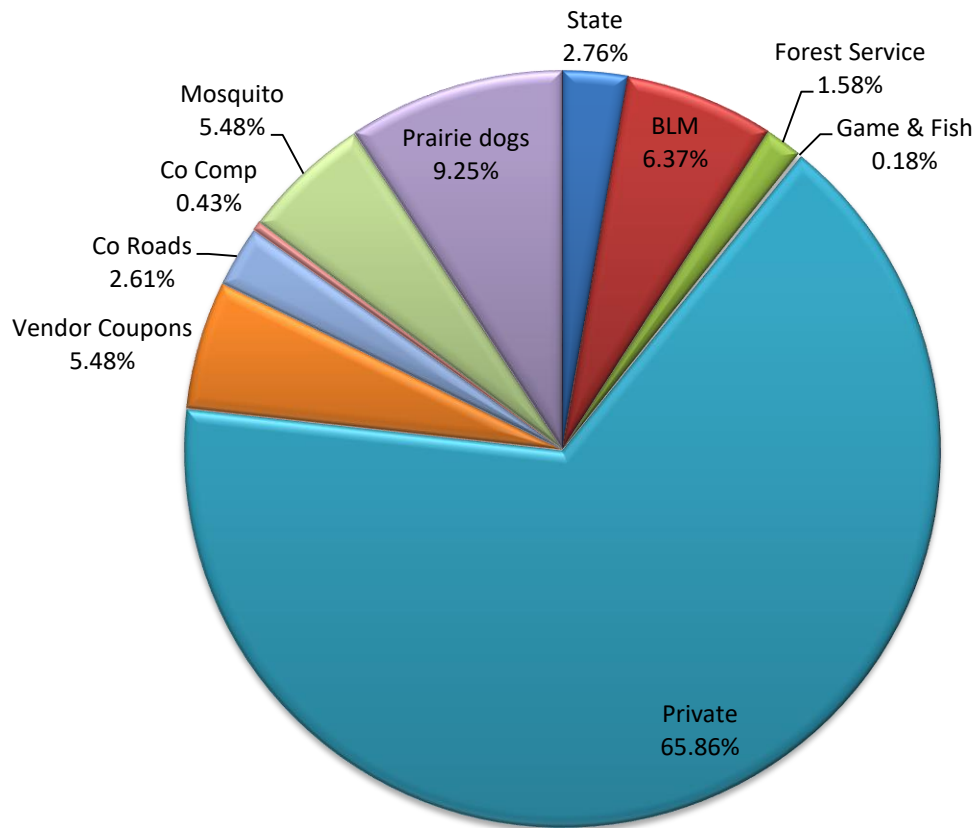


The map shows the acres covered by the District in 2017. 512 application records were processed during the year. The following graphs show the percentage based on acres of applicatons and program dollars.

Application Percentage



Program Dollars



The pie chart above represents Total Program Dollars. This includes District and match dollars.

Private Lands

Private	acres	Labor \$	Equip \$	Herbicide \$	Total \$
General	2218.05	\$ 120,726.06	\$ 24,497.30	\$ 26,438.82	\$ 171,662.18
Leafy Spurge	4368.28	\$ 233,060.38	\$ 17,748.08	\$ 58,681.57	\$ 309,490.03
Salt Cedar	482.92	\$ 22,274.59	\$ 12,390.46	\$ 34,661.36	\$ 69,326.41
Totals	7069.25	\$ 376,061.03	\$ 54,635.84	\$ 119,781.75	\$ 550,478.62

Government Agencies

2017 Bureau of Land Management

BLM	acres	Labor \$	Equip \$	Herbicide \$	Total \$
General	61.5	\$ 4,998.43	\$ 2,426.78	\$ 868.16	\$ 8,293.37
Leafy Spurge	324.7	\$ 26,484.00		\$ 4,044.36	\$ 30,528.36
Totals	386.2	\$ 31,482.43	\$ 2,426.78	\$ 4,912.52	\$ 38,821.73

2017 State Lands

State	acres	Labor \$	Equip \$	Herbicide \$	Total \$
Leafy Spurge	213.25	\$ 21,096.19	\$ 206.52	\$ 2,697.29	\$ 24,000.00

2017 Forest Service

Forest Service	acres	Labor \$	Equip \$	Herbicide \$	BioControl	Total \$
General	26.4	\$ 6,214.01	\$ 902.68	\$ 296.80	\$ 479.58	\$ 7,893.07
Leafy Spurge	22.5	\$ 4,802.75	\$ 661.50	\$ 408.94		\$ 5,873.19
Totals	48.9	\$ 11,016.76	\$ 1,564.18	\$ 705.74	\$ 479.58	\$ 13,766.26

2017 Game & Fish

Game & Fish	acres	Labor \$	Equip \$	Herbicide \$	Total \$
General				\$ 1,526.00	\$ 1,526.00

Johnson County Weed and Pest Control District

www.jcweedandpest.com