



# 2015 End of Year Report

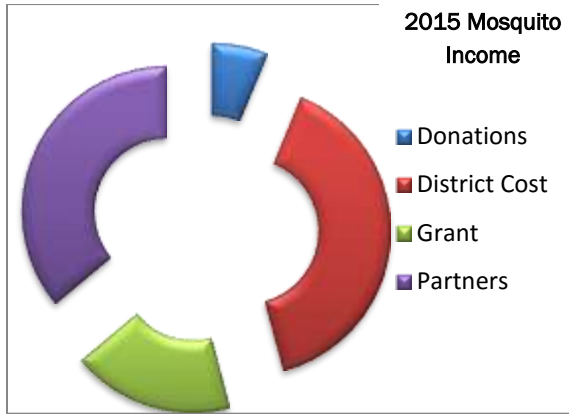
## Johnson County Weed and Pest Control District Mission and Policy

The Johnson County Weed & Pest is committed to providing leadership and education for the long term management of noxious weeds & pests through prevention, biological, cultural, mechanical and chemical controls. We are dedicated to decreasing the impacts of invasive species on native plant and animal communities, private and public lands, and local economies. The Johnson County Weed & Pest strives to have effective programs for the management of noxious weeds and pests by promoting and coordinating management and control through integrated pest management techniques, cooperation with landowners, agencies, organizations, and by providing technical expertise and educational opportunities to all within the county.

Mosquitoes	-	page 2
Prairie dogs	-	page 2
Field Certifications	-	page 2
County Roads	-	page 3
Comped weeds	-	page 3
Wy DOT	-	page 4
Sprayer use	-	page 4
Coupons	-	page 5
Time tracking	-	page 6
Application Coverages Map	-	page 7
Program percentages & dollars	-	page 8
Private Lands	-	page 9
Government Agencies	-	page 9

## Annual Mosquito Abatement Program in the Clear Creek Drainage.

*We apply larvacide throughout the summer to all mosquito infested water bodies from Buffalo to Ucross and in the City of Buffalo. The larvaciding program has been very successful over the past few years with no impact to bees and without the invasiveness of an aerial program. We do have ground fogging equipment, also, if needed and requested if an isolated adult outbreak occurs. In addition to the application in the Clear Creek drainage there is an available county wide cost share program on larvacide.*



### County wide mosquito program

	Income	Expense
Grant	\$ 13,950.00	
Donations	\$ 4,770.00	
JC Weed & Pest	\$ 30,543.53	
Partners	\$ 21,528.39	
In Kind	\$ 6,262.80	\$ 6,262.80
Pesticides		\$ 38,580.50
Labor		\$ 11,084.69
Miles&Equip		\$ 10,045.90
Contractual		\$ 1,680.00
Tire Recycle		\$ 5,201.00
Supplies		\$ 130.55
Admin/Educa		\$ 4,069.28
<b>Totals</b>	<b>\$ 77,054.72</b>	<b>\$ 77,054.72</b>

## 2015 Prairie Dog Cost Share

### Prairie Dogs 2015

Units	Rodenticide	Price Each	Total Cost	District Cost	LO Cost
619	Fumitoxin	\$ 24.50	\$ 15,165.50	\$ 15,165.50	\$ -
162	Gas Cartridge	\$ 1.45	\$ 234.90	\$ -	\$ 234.90
1	Rozol (30 lb)	\$ 72.00	\$ 72.00	\$ 57.00	\$ 15.00
64	Rozol (25 lb)	\$ 69.25	\$ 4,432.00	\$ 3,472.00	\$ 960.00
172	Rozol (50 lb)	\$ 119.50	\$ 20,554.00	\$ 16,254.00	\$ 4,300.00
47	33 lb - ZP Oats	\$ 33.00	\$ 1,551.00	\$ 1,551.00	\$ -
175	50 lb - ZP Oats	\$ 30.00	\$ 5,250.00	\$ 5,250.00	\$ -
1034.7	2014 Rebates	\$ 5.00	\$ 5,173.50	\$ 5,173.50	
<b>Totals</b>			<b>\$ 52,432.90</b>	<b>\$ 46,923.00</b>	<b>\$ 5,509.90</b>

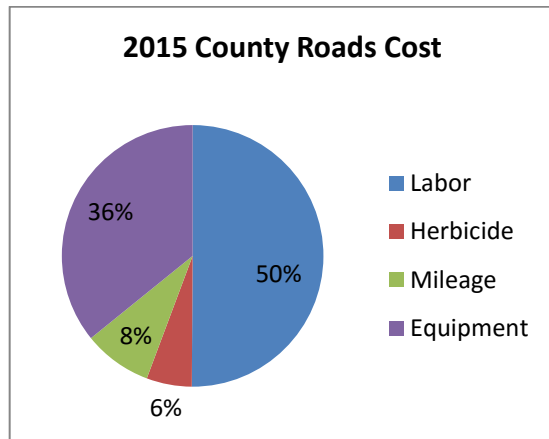
The District offers a rebate program to landowners that hire a commercial applicator to treat Prairie Dogs using ZP Oats on their private land.

## 2015 Field Certifications

Rod certified fields for 7 hay/straw producers in the County.

## 2015 County Roads

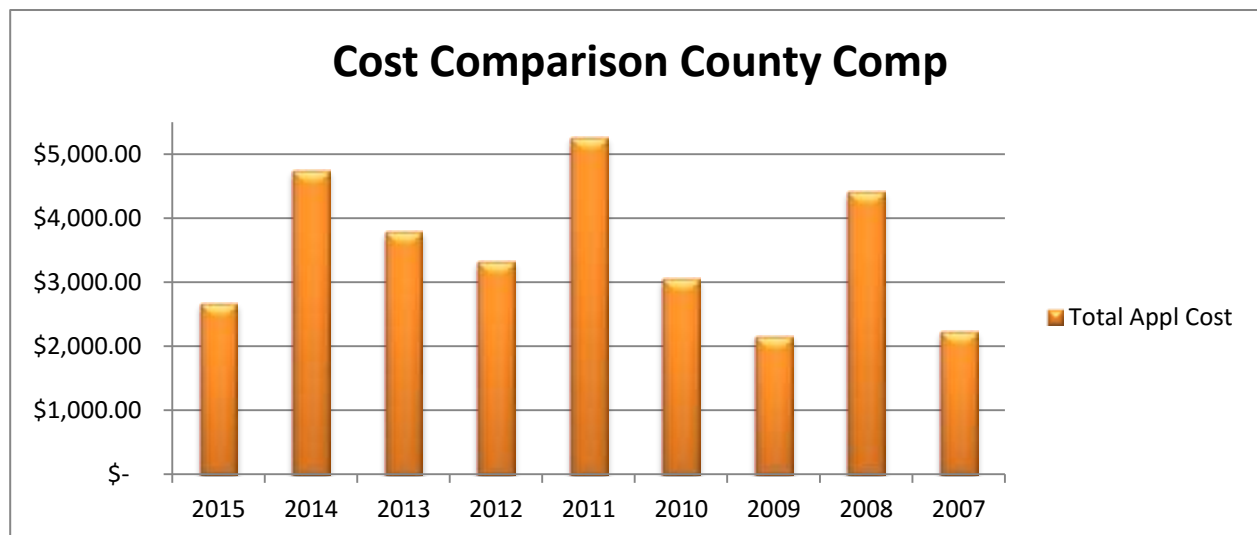
In 2015 the District treated 38.78 acres/977.8 miles on county roads.



2015 Co Road Cost	
Labor	\$8,371.12
Herbicide	\$935.41
Mileage	\$1,415.78
Equipment	\$5,985.80
<b>Total Cost</b>	<b>\$16,708.11</b>

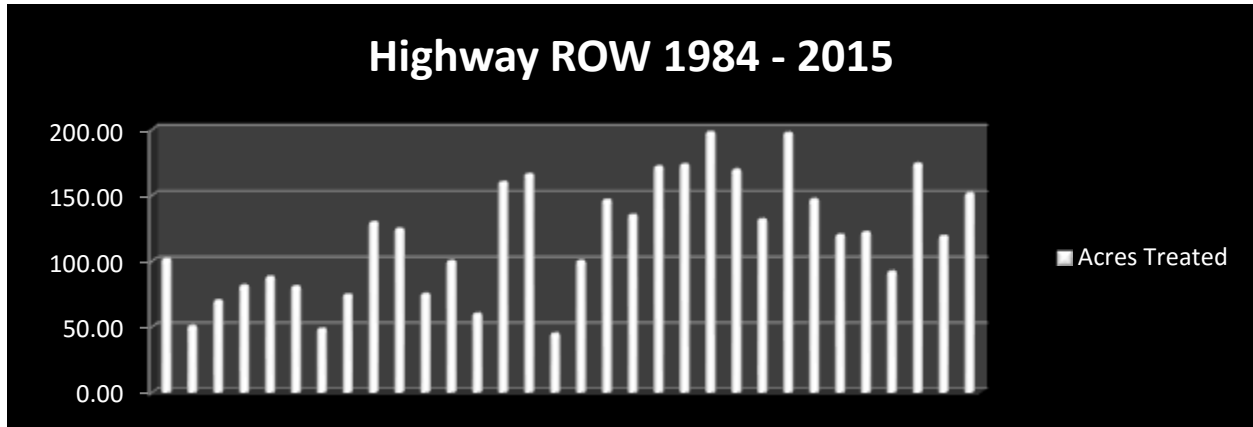
## 2015 County Comp

County Comp includes spraying of county properties, cleanup on private lands and small spray jobs that do not fit in our cost share programs.



## 2015 Wyoming Department of Transportation

The District contracts the spraying by bid of the state highway ROW in Johnson County. The State Allocation was \$ 22,960.00 for 2015. A total of 375 hours were spent treating 151.5 acres.



### 2015 Sprayer use and donations

The District has the following equipment for use, on a donation basis.

Backpack	
Year	Days Used
2009	127
2010	40
2011	289
2012	88
2013	185
2014	74
2015	195

200 gallon	
Year	Days Used
2009	15
2010	12
2011	0
2012	4
2013	89
2014	0
2015	12

Boom sprayer	
Year	Days Used
2009	38
2010	40
2011	23
2012	56
2013	18
2014	16
2015	3

25 g ATV Sprayer	
Year	Days Used
2009	93
2010	146
2011	108
2012	109
2013	259
2014	157
2015	109

150 gallon	
Year	Days Used
2009	58
2010	76
2011	24
2012	77
2013	23
2014	22
2015	81

Mosquito Fogger	
Year	Days Used
2009	10
2010	23
2011	69
2012	33
2013	150
2014	17
2015	43

50 gallon	
Year	Days Used
2009	0
2010	35
2011	20
2012	19
2013	77
2014	3
2015	113

Insecticide Only	
Year	Days Used
2009	29
2010	4
2011	5
2012	6
2013	2
2014	7
2015	24

## 2015 Vendor Coupon Cost Share

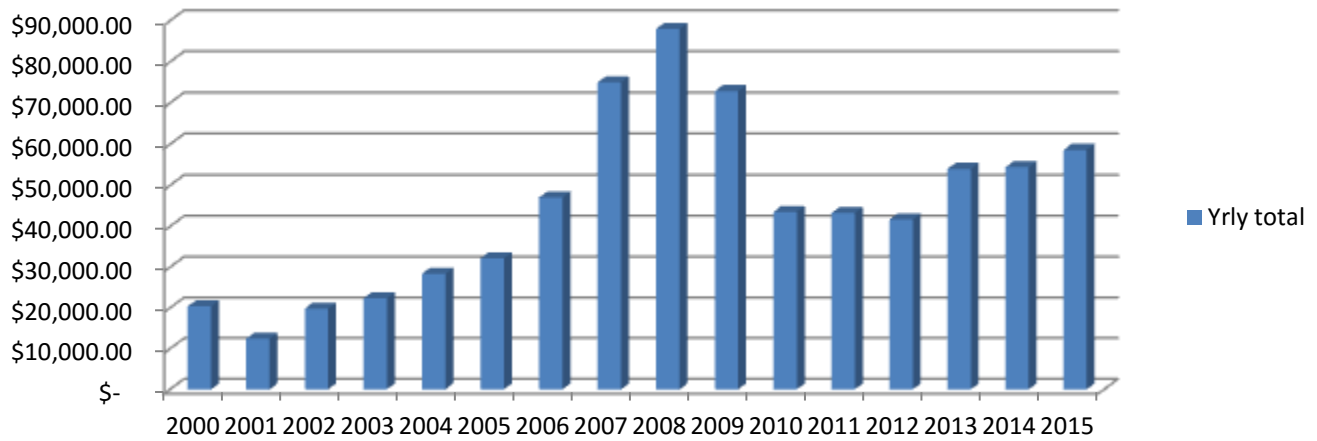
*District cost share on Designated and Declared weeds is 80/20 with the exception of Leafy spurge and Salt Cedar, the District pays 100%, as allowed by statute.*

2015

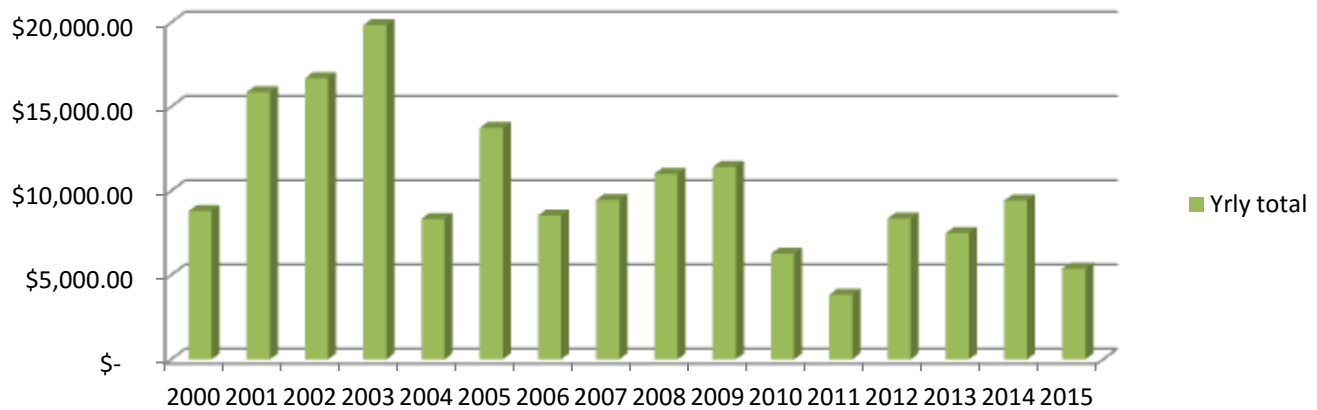
General	units	District \$	L.O. \$	Total \$
2,4-D	243	\$ 2,467.11	\$ 617.22	\$ 3,084.33
Banvel	5	\$ 250.46	\$ 62.60	\$ 313.06
Curtail	77.5	\$ 2,500.15	\$ 624.65	\$ 3,124.80
Element 4	2.5	\$ 102.83	\$ 25.70	\$ 128.53
Escort	72	\$ 231.84	\$ 58.32	\$ 290.16
Forefront HL	260	\$ 13,586.46	\$ 3,387.80	\$ 16,974.26
Impel	7.5	\$ 68.85	\$ 17.25	\$ 86.10
Milestone	66.25	\$ 16,462.75	\$ 4,110.81	\$ 20,573.56
MSM	616	\$ 1,293.60	\$ 326.48	\$ 1,620.08
Opensight	1220	\$ 5,362.85	\$ 1,639.95	\$ 7,002.80
Opti-Amine	141	\$ 1,737.62	\$ 740.25	\$ 2,477.87
Rangestar	22.5	\$ 509.10	\$ 124.65	\$ 633.75
Roundup Eql	272.5	\$ 2,569.69	\$ 643.10	\$ 3,212.79
Tordon	418.5	\$ 11,458.37	\$ 3,938.09	\$ 15,396.46
		<b>\$ 58,601.68</b>	<b>\$ 16,316.87</b>	<b>\$ 74,918.55</b>

Leafy Spurge	units	District \$	Total \$
2,4-D	32.5	\$ 411.45	\$ 411.45
Banvel	2.5	\$ 156.53	\$ 156.53
Tordon	102.5	\$ 4,821.60	\$ 4,821.60
		<b>\$ 5,389.58</b>	<b>\$ 5,389.58</b>

### General Vendor Coupon \$ spent by District



### Leafy Spurge Vendor Coupons \$ spent by District

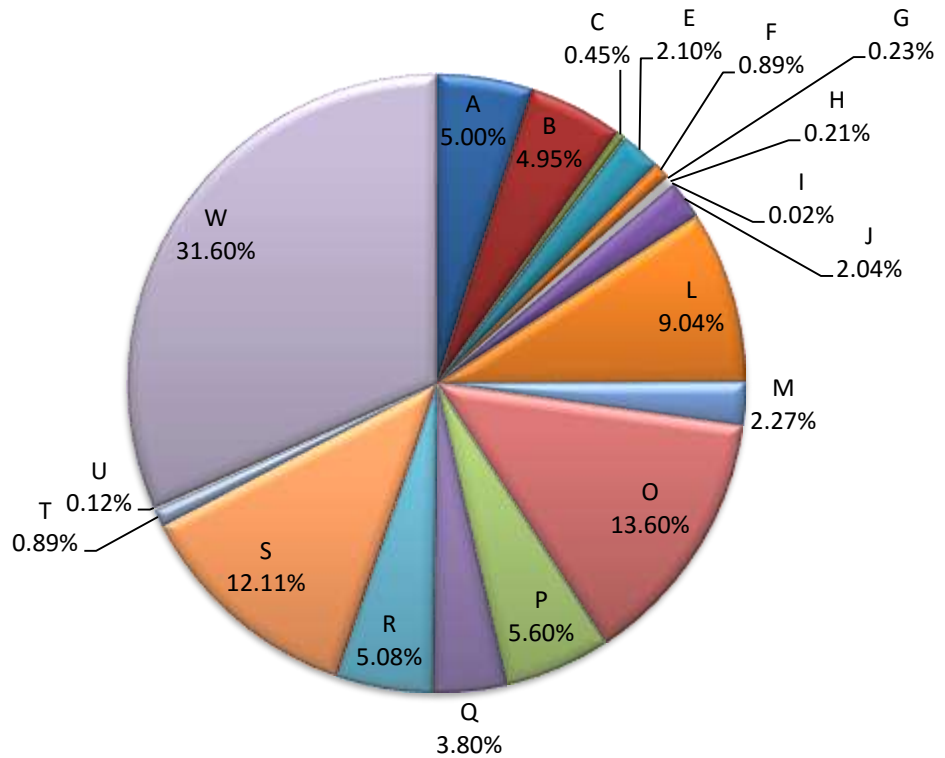


## 2015 Employees Time Spent

The District has assigned the following task codes in order to track where the employees time is spent. The graph includes all employees time. We also assign labor rates and track each task code for each labor rate.

Code	Task	Code	Task
A	Administrative	L	Leafy Spurge
B	Bonus and Holiday	M	Mosquito
C	County Comp Application	O	Office
D	Data Collection	P	Shop
E	Education	Q	Bookkeeping
F	Customer Relations	R	County Roads
G	GIS	S	Salt Cedar
H	Health	T	Tracking Archives
I	Incomplete day	U	BioControl release
J	Personal leave	V	Survey Salt Cedar
K	Kill Prairie Dogs	W	Weed Spraying

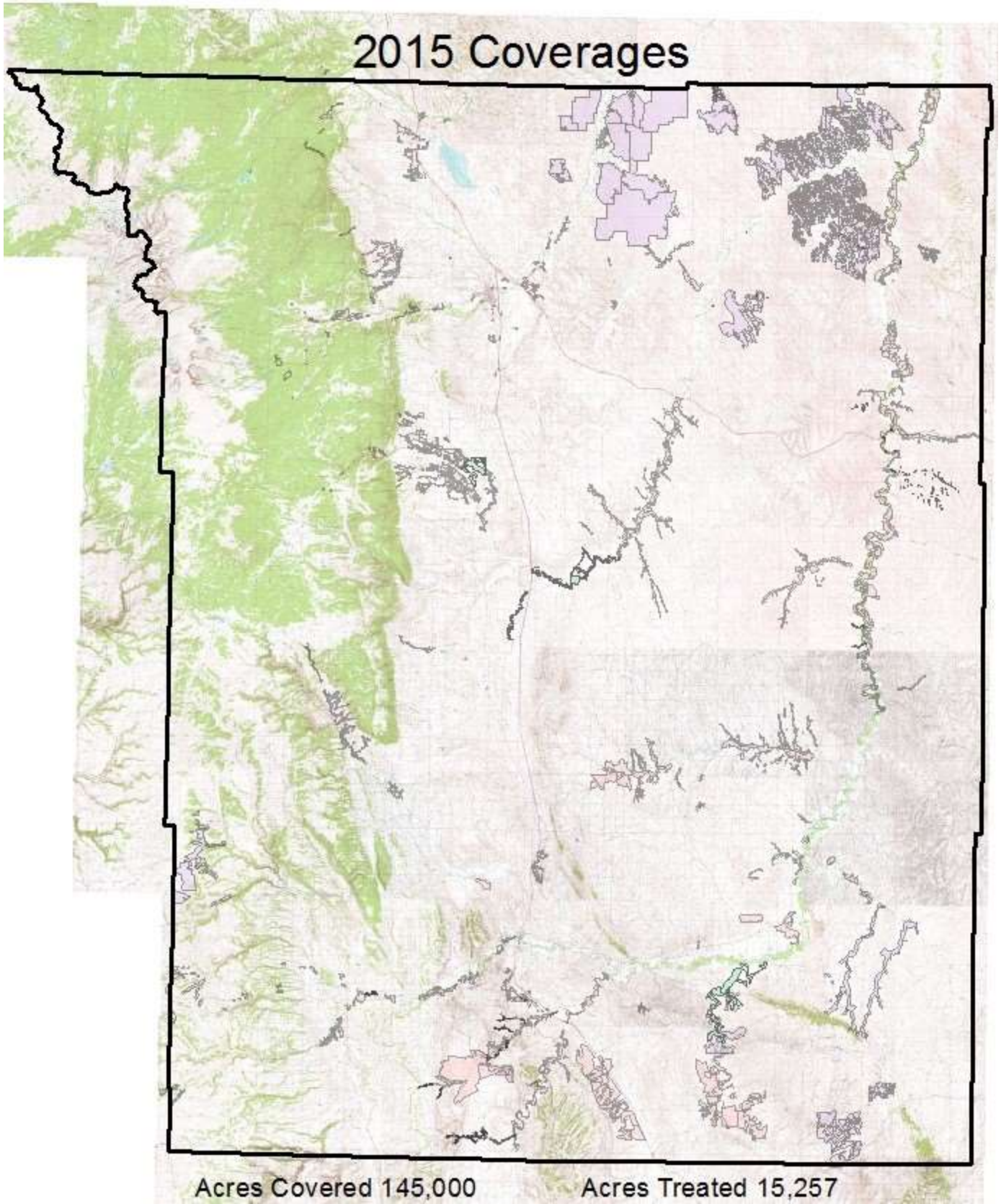
### 2015 Task Code Totals



### Hours Spraying vs Hours other Tasks

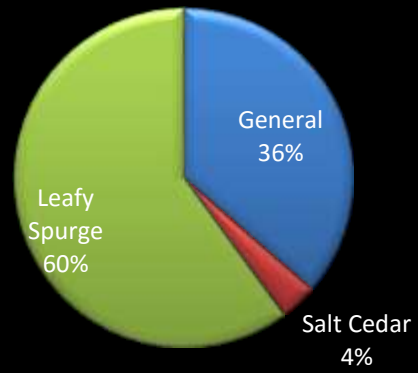




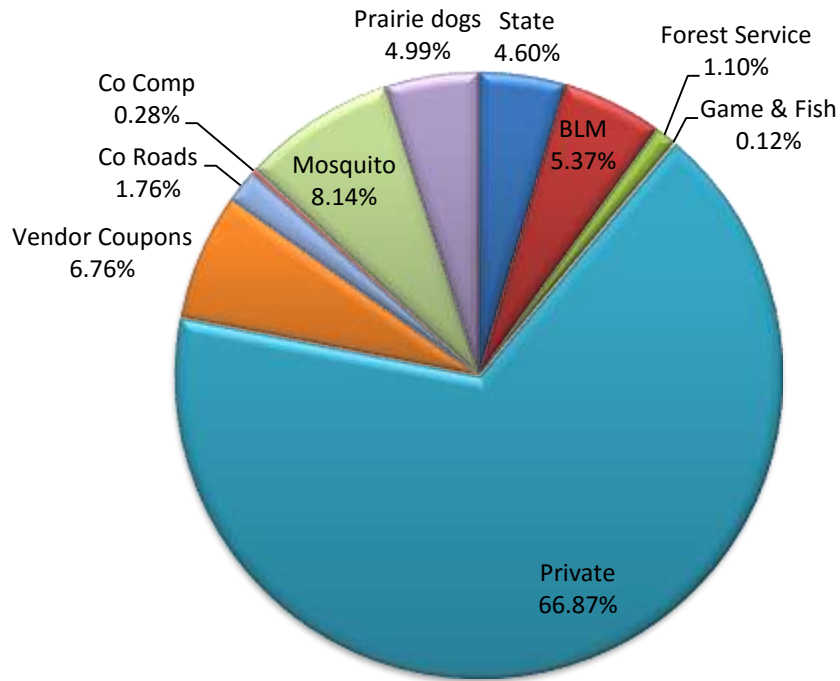


The map shows the acres covered by the District in 2015. 439 application records were processed during the year. The following graphs show the percentage based on acres of applications and program dollars.

## Application Percentage



## Program Dollars



The pie chart above represents Total Program Dollars. This includes District and match dollars.



## Private Lands

Private	acres	Labor \$	Equip \$	Herbicide \$	Total \$
General	4296.5	\$ 129,201.74	\$ 33,031.36	\$ 68,415.16	\$ 230,648.26
Leafy Spurge	7199.1	\$ 243,923.88	\$ 3,514.36	\$ 96,462.67	\$ 343,900.91
Salt Cedar	432.5	\$ 24,682.63	\$ 17,620.34	\$ 16,259.23	\$ 58,562.20
<b>Totals</b>	11928.1	\$ 397,808.25	\$ 54,166.06	\$ 181,137.06	\$ 633,111.37

## Government Agencies

### 2015 Bureau of Land Management

BLM	acres	Labor \$	Equip \$	Herbicide \$	Total \$
General	448.5	\$ 9,368.82	\$ 4,645.52	\$ 4,200.96	\$ 18,215.30
Leafy Spurge	359.5	\$ 21,725.28	\$ 331.12	\$ 5,266.83	\$ 27,323.23
Salt Cedar	12.5	\$ 3,664.67	\$ 933.80	\$ 674.61	\$ 5,273.08
<b>Totals</b>	820.5	\$ 34,758.77	\$ 5,910.44	\$ 10,142.40	\$ 50,811.61

### 2015 State Lands

State	acres	Labor \$	Equip \$	Herbicide \$	Total \$
General	95	\$ -	\$ -	\$ 1,875.74	\$ 1,875.74
Leafy Spurge	469	\$ 28,934.56	\$ 511.80	\$ 6,664.06	\$ 36,110.42
Salt Cedar	30.5	\$ 2,945.11	\$ 1,259.58	\$ 1,401.44	\$ 5,606.13
<b>Totals</b>	594.5	\$ 31,879.67	\$ 1,771.38	\$ 9,941.24	\$ 43,592.29

### 2015 Forest Service

Forest Service	acres	Labor \$	Equip \$	Herbicide \$	Total \$
General	30	\$ 6,168.07	\$ 873.22	\$ 572.18	\$ 7,613.47
Leafy Spurge	9	\$ 2,402.67	\$ 221.60	\$ 163.42	\$ 2,787.69
<b>Totals</b>	39	\$ 8,570.74	\$ 1,094.82	\$ 735.60	\$ 10,401.16

### 2015 Game & Fish

Game & Fish	acres	Labor \$	Equip \$	Herbicide \$	Total \$
General	10	\$ 862.30	\$ 128.78	\$ 183.41	\$ 1,174.52

**Johnson County Weed and Pest Control District**

[www.jcweedandpest.com](http://www.jcweedandpest.com)