



2014 End of Year Report

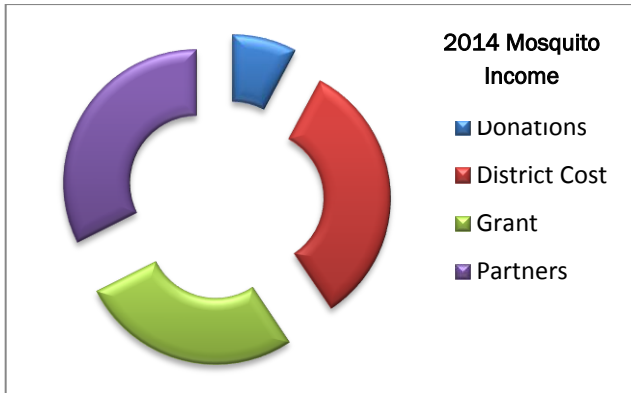
Johnson County Weed and Pest Control District Mission and Policy

The Johnson County Weed & Pest is committed to providing leadership and education for the long term management of noxious weeds & pests through prevention, biological, cultural, mechanical and chemical controls. We are dedicated to decreasing the impacts of invasive species on native plant and animal communities, private and public lands, and local economies. The Johnson County Weed & Pest strives to have effective programs for the management of noxious weeds and pests by promoting and coordinating management and control through integrated pest management techniques, cooperation with landowners, agencies, organizations, and by providing technical expertise and educational opportunities to all within the county.

- Mosquitoes - page 2
- Prairie dogs - page 2
- Field Certifications - page 2
- County Roads - page 3
- Comped weeds - page 3
- Wy DOT - page 4
- Sprayer use - page 4
- Coupons - page 5
- Time tracking - page 6
- Application Coverages Map - page 7
- Program percentages & dollars - page 8
- Private Lands - page 9
- Government Agencies- page 9

Annual Mosquito Abatement Program in the Clear Creek Drainage.

We apply larvacide throughout the summer to all mosquito infested water bodies from Buffalo to Ucross and in the City of Buffalo. The larvaciding program has been very successful over the past few years with no impact to bees and without the invasiveness of an aerial program. We do have ground fogging equipment, also, if needed and requested if an isolated adult outbreak occurs. In addition to the application in the Clear Creek drainage there is an available county wide cost share program on larvacide.



County wide mosquito program

	Income	Expense
Grant	\$ 16,000.00	
Donations	\$ 4,635.00	
JC Weed & Pest	\$ 19,454.25	
Partners	\$ 12,945.20	
In Kind	\$ 6,262.80	\$ 6,262.80
Pesticides		\$ 15,864.36
Labor		\$ 14,993.02
Miles&Equip		\$ 17,252.64
Tire Recycle		\$ 1,643.00
Supplies		\$ 57.75
Admin/Educa		\$ 3,223.68
Totals	\$ 59,297.25	\$ 59,297.25

2014 Prairie Dog Cost Share

Prairie Dogs 2014

Units	Rodenticide	Price Each	Total Cost	District Cost	LO Cost
185	Fumitoxin	\$ 24.50	\$ 4,532.50	\$ 4,532.50	\$ -
211	Gas Cartridge	\$ 1.45	\$ 305.95	\$ -	\$ 305.95
273	33 lb - ZP Oats	\$ 33.00	\$ 9,009.00	\$ 9,009.00	\$ -
34	Rozol (30 lb)	\$ 72.00	\$ 2,448.00	\$ 1,938.00	\$ 510.00
5	Rozol (25 lb)	\$ 69.25	\$ 346.25	\$ 271.25	\$ 75.00
176	Rozol (50 lb)	\$ 113.50	\$ 19,976.00	\$ 17,336.00	\$ 2,640.00
4	Rozol (50 lb)	\$ 119.50	\$ 478.00	\$ 378.00	\$ 100.00
Totals			\$ 37,095.70	\$ 33,464.75	\$ 3,630.95

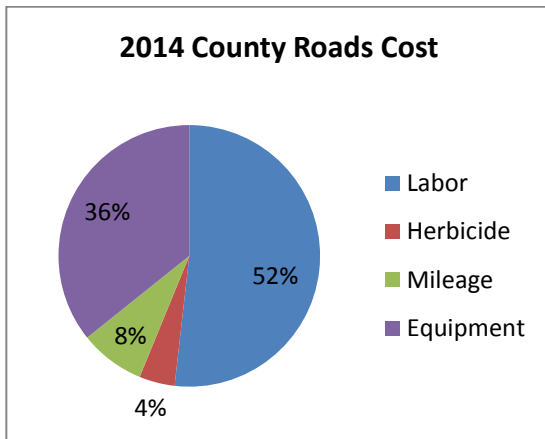
The District offers a rebate program to landowners that hire a commercial applicator to treat Prairie Dogs using ZP Oats on their private land. In 2014 the District Board implemented guidelines to assure greater accountability by commercial applicators, landowners and the district for the funds invested in this program.

2014 Field Certifications

Rod certified fields for 5 hay/straw producers in the County.

2014 County Roads

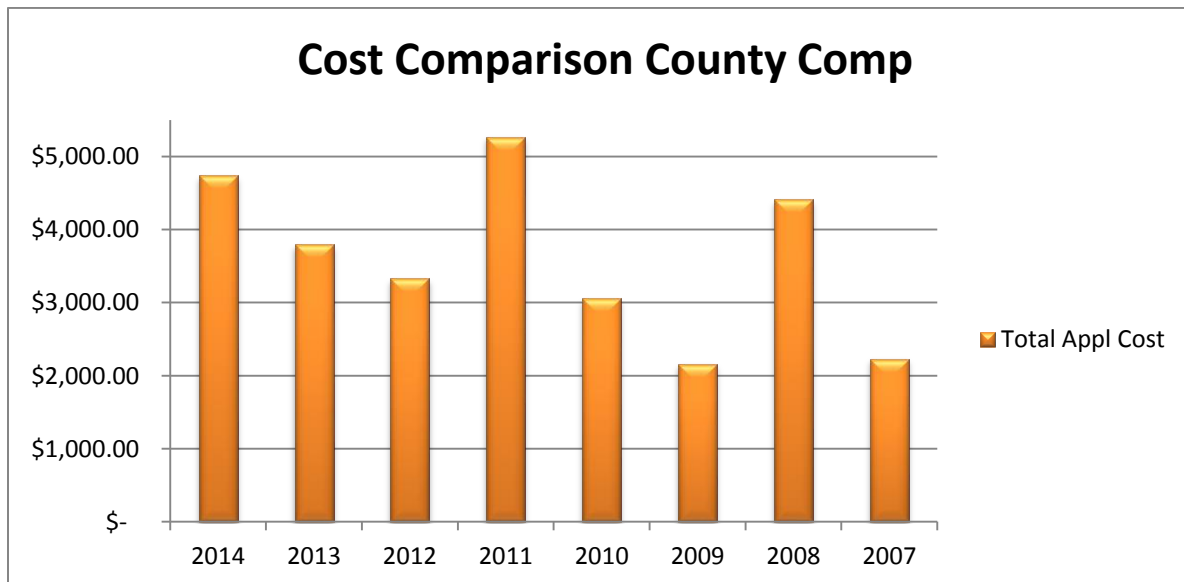
In 2014 the District treated 23.1 acres/1008.39 miles on county roads.



2014 Co Road Cost	
Labor	\$6,719.63
Herbicide	\$570.12
Mileage	\$1,046.08
Equipment	\$4,637.20
Total Cost	\$12,973.03

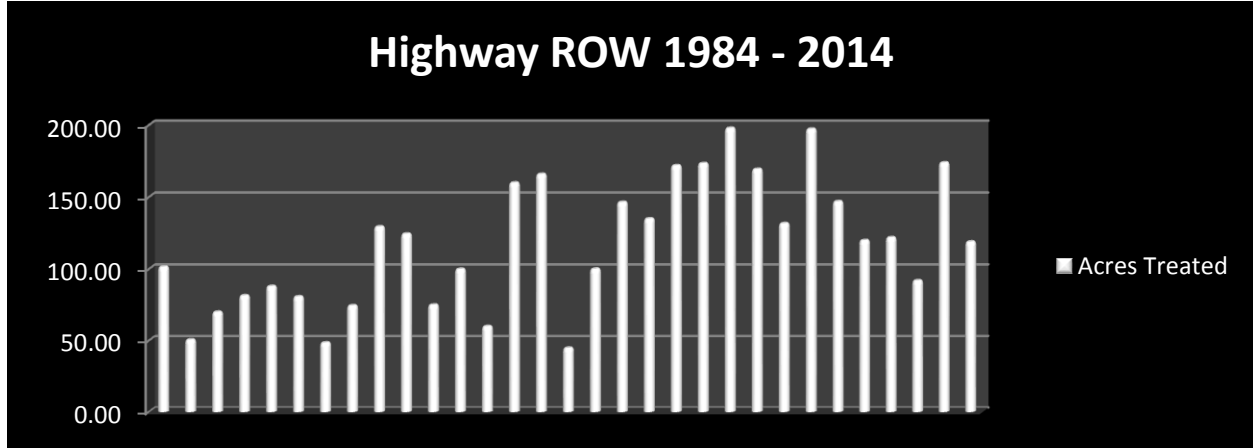
2014 County Comp

County Comp includes spraying of county properties, cleanup on private lands and small spray jobs that do not fit in our cost share programs.



2014 Wyoming Department of Transportation

The District contracts the spraying by bid of the state highway ROW in Johnson County. The State Allocation was \$ 22,960.00 for 2014. A total of 340 hours were spent treating 119 acres.



2014 Sprayer use and donations

The District has the following equipment for use, on a donation basis.

Backpack	
Year	Days Used
2009	127
2010	40
2011	289
2012	88
2013	185
2014	74

200 gallon	
Year	Days Used
2009	15
2010	12
2011	0
2012	4
2013	89
2014	0

Boom sprayer	
Year	Days Used
2009	38
2010	40
2011	23
2012	56
2013	18
2014	16

25 g ATV Sprayer	
Year	Days Used
2009	93
2010	146
2011	108
2012	109
2013	259
2014	157

150 gallon	
Year	Days Used
2009	58
2010	76
2011	24
2012	77
2013	23
2014	22

Mosquito Fogger	
Year	Days Used
2009	10
2010	23
2011	69
2012	33
2013	150
2014	17

50 gallon	
Year	Days Used
2009	0
2010	35
2011	20
2012	19
2013	77
2014	3

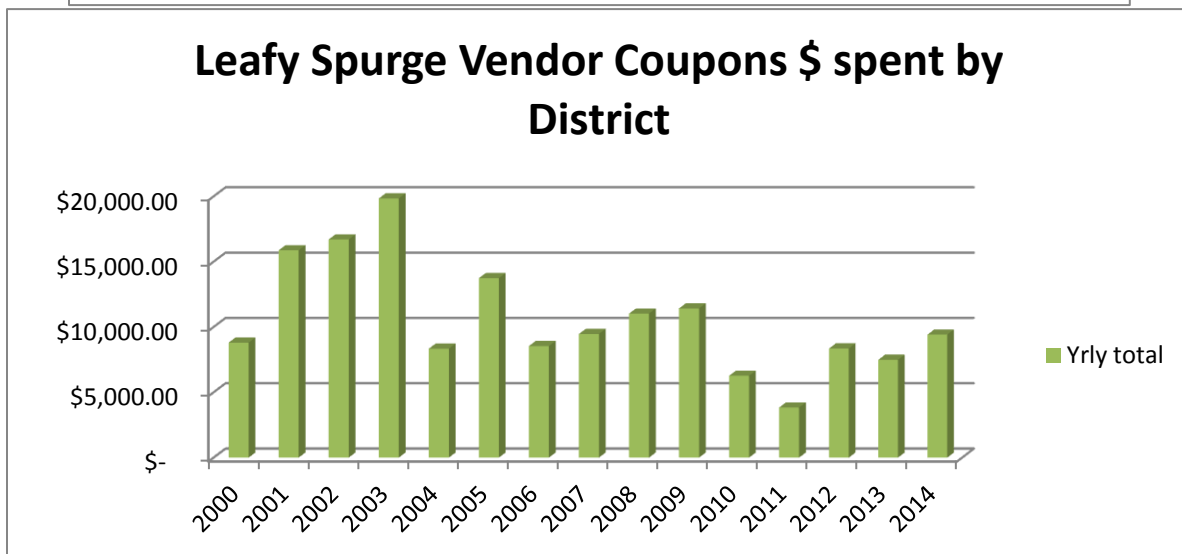
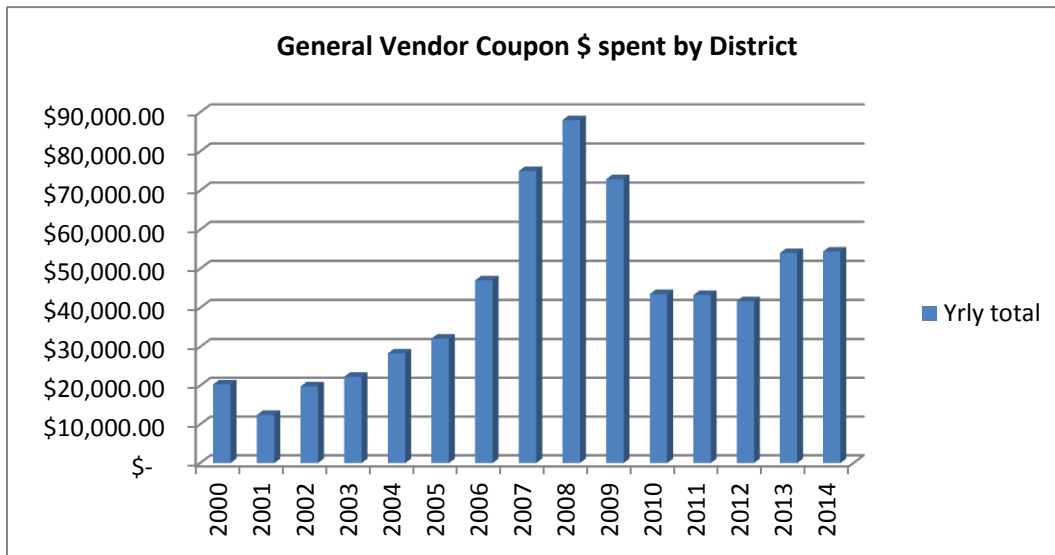
Insecticide Only	
Year	Days Used
2009	29
2010	4
2011	5
2012	6
2013	2
2014	7

2014 Vendor Coupon Cost Share

District cost share on Designated and Declared weeds is 80/20 with the exception of Leafy spurge and Salt Cedar, the District pays 100%, as allowed by statute.

General	units	District \$	L.O. \$	Total \$
2,4-D	127	\$ 1,448.34	\$ 595.71	\$ 2,044.05
Banvel	10	\$ 663.00	\$ 165.80	\$ 828.80
Curtail	47.5	\$ 1,787.45	\$ 446.98	\$ 2,234.43
Escort	152	\$ 1,052.80	\$ 250.80	\$ 1,303.60
Forefront HL	87.5	\$ 4,233.25	\$ 1,058.75	\$ 5,292.00
Metcel	329.61	\$ 806.32	\$ 481.89	\$ 1,288.21
Milestone	39.75	\$ 10,685.70	\$ 2,661.38	\$ 13,347.08
Opensight	1.25	\$ 89.98	\$ 22.50	\$ 112.48
Opti-Amine	140	\$ 2,815.10	\$ 1,674.95	\$ 4,490.05
Rangestar	15.5	\$ 380.33	\$ 93.78	\$ 474.11
Roundup Eql	272	\$ 3,595.84	\$ 897.60	\$ 4,493.44
Tordon	317.5	\$ 11,633.78	\$ 6,857.68	\$ 18,491.46
		\$ 39,191.89	\$ 15,207.82	\$ 54,399.71

Leafy Spurge	units	District \$
2,4-D	27.5	\$ 415.80
Banvel	25	\$ 2,072.00
MSM	8	\$ 29.12
Tordon	118.5	\$ 6,901.44
		\$ 9,418.36

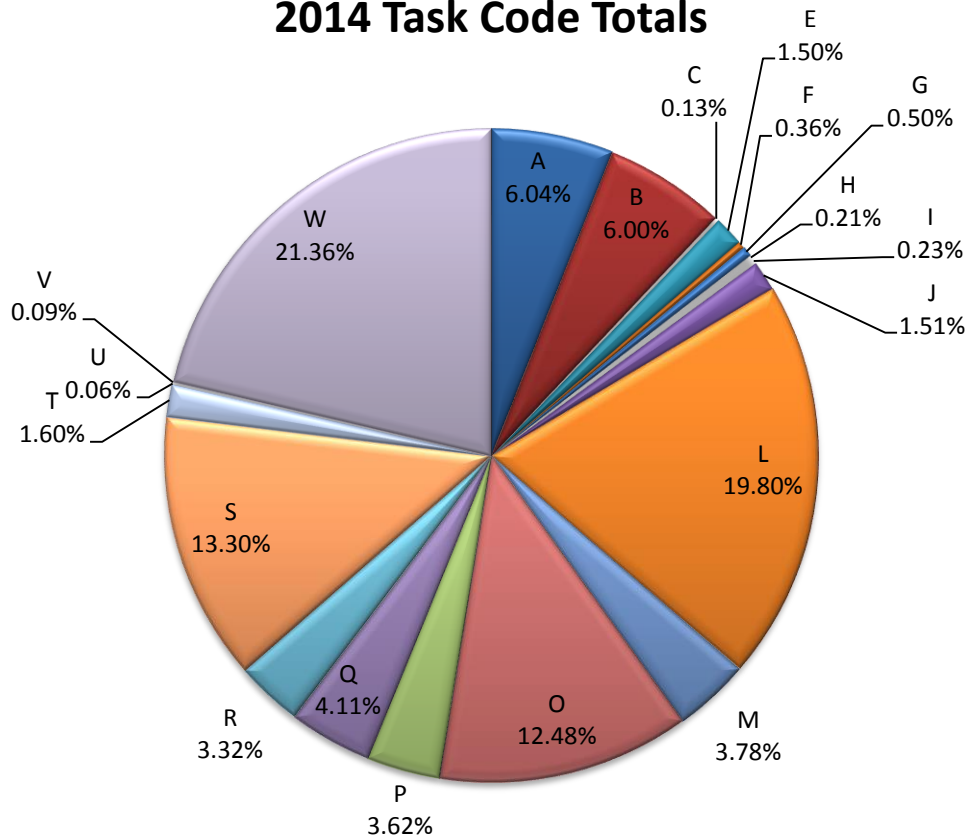


2014 Employees Time Spent

The District has assigned the following task codes in order to track where the employees time is spent. The graph includes all employees time. We also assign labor rates and track each task code for each labor rate.

Code	Task	Code	Task
A	Adminstrative	L	Leafy Spurge
B	Bonus and Holiday	M	Mosquito
C	County Comp Application	O	Office
D	Data Collection	P	Shop
E	Education	Q	Bookkeeping
F	Customer Relations	R	County Roads
G	GIS	S	Salt Cedar
H	Health	T	Tracking Archives
I	Incomplete day	U	BioControl release
J	Personal leave	V	Survey Salt Cedar
K	Kill Prairie Dogs	W	Weed Spraying

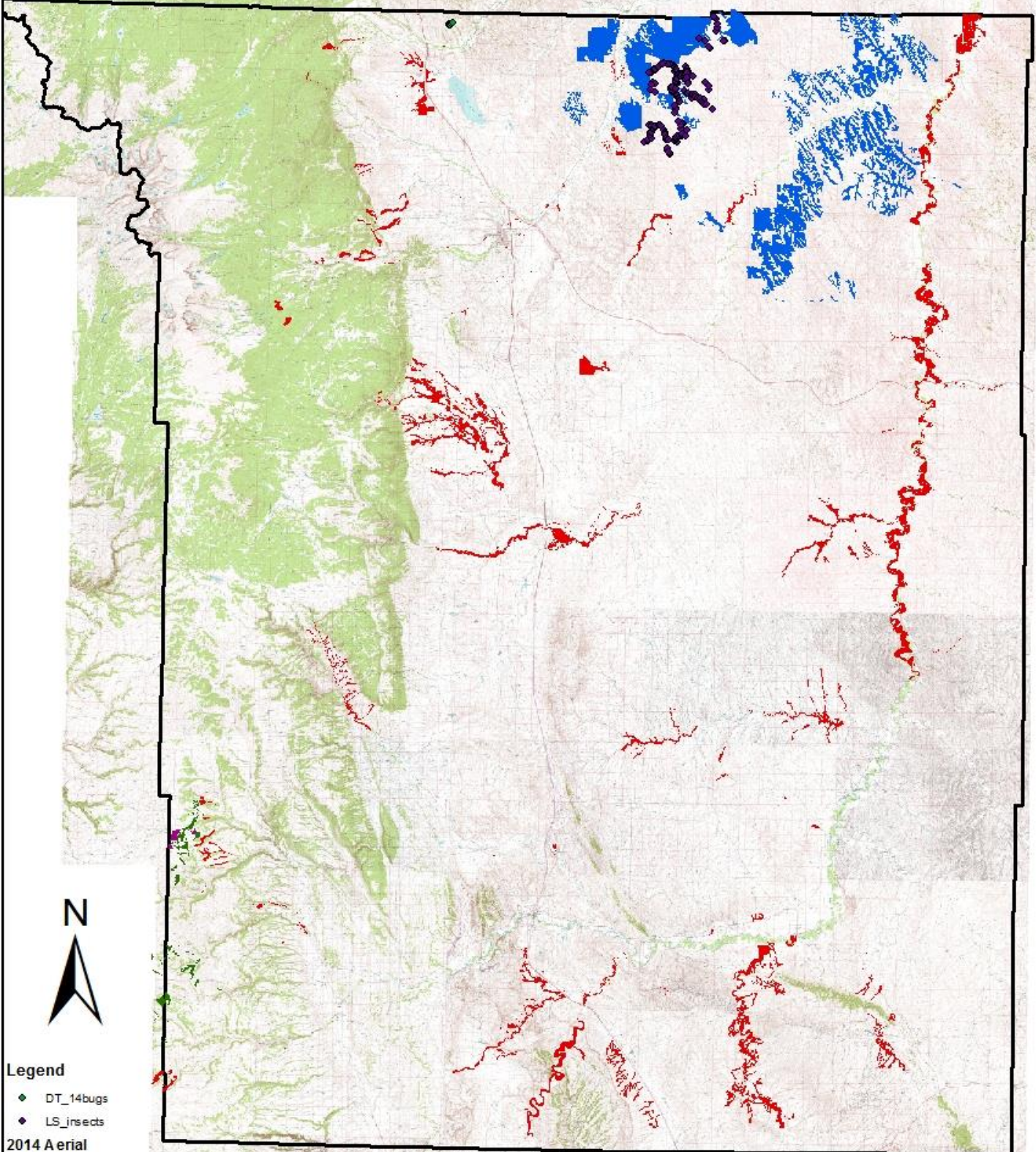
2014 Task Code Totals



Hours Spraying vs Hours other Tasks



2014 Coverages



Legend

- ◆ DT_14bugs
- ◆ LS_insects

2014 Aerial

■ <all other values>

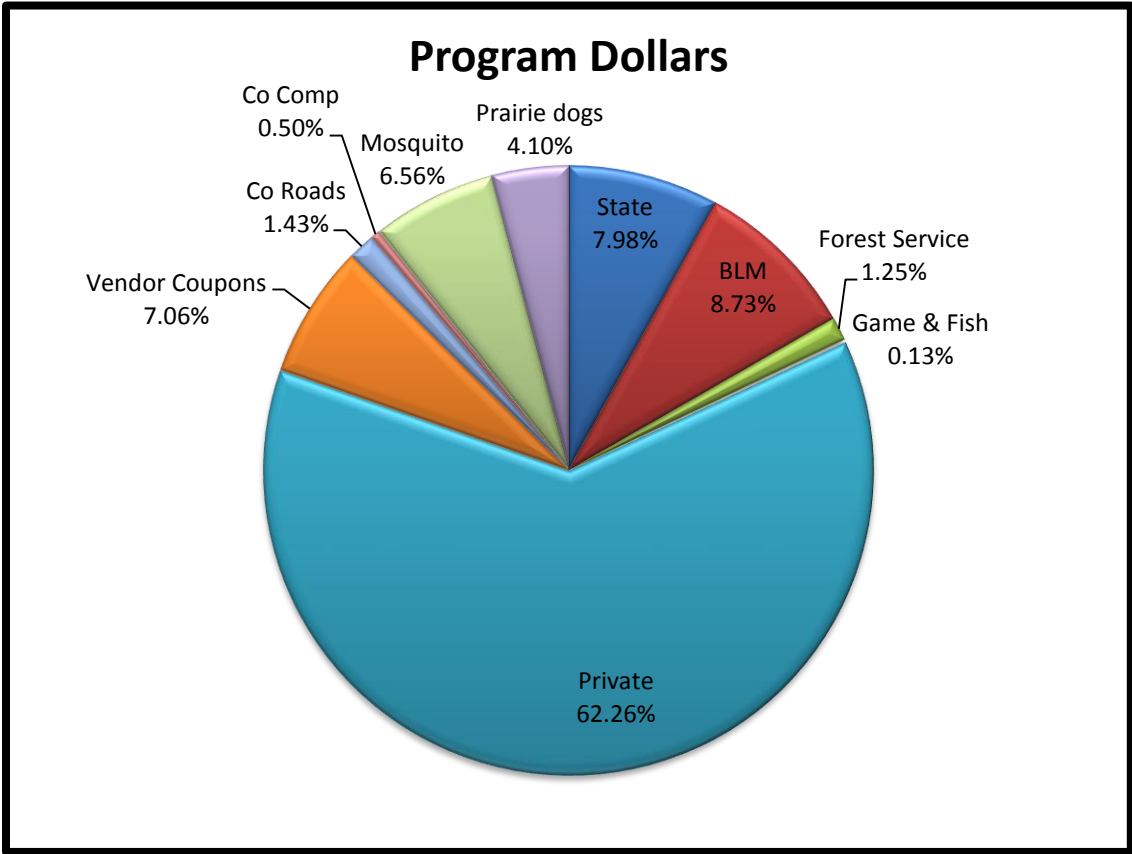
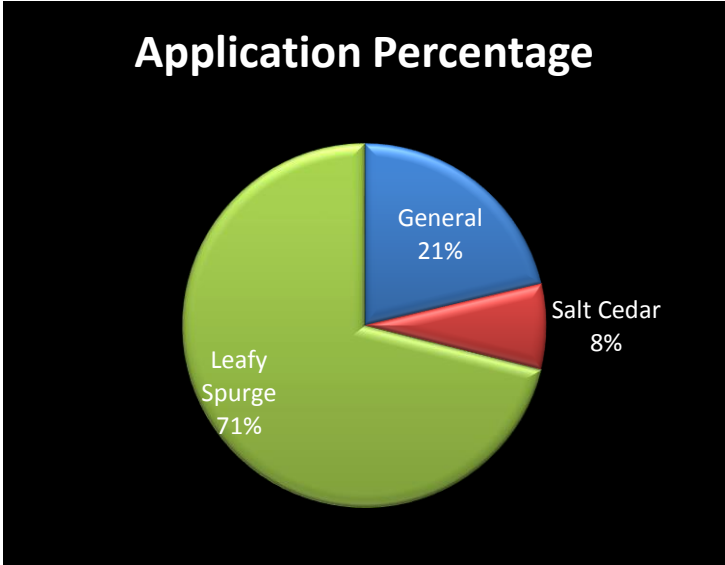
Weed

- LS
- TL
- TL_Brush
- 2014_Coverages_2

Aerial Acres covered= 48,065
Ground Acres cover= 58,210
Total Covered= 106,275

Aerial Acres treated= 7983
Ground Acres treat= 3400
Total Treated= 11,383

The map shows the acres covered by the District in 2014. 459 application records were processed during the year. The following graphs show the percentage based on acres of applicatons and program dollars.



The pie chart above represents Total Program Dollars. This includes District and match dollars.

Private Lands

Private	acres	Labor \$	Equip \$	Herbicide \$	Total \$	District \$
General	1980.05	\$ 82,102.67	\$ 18,122.58	\$ 44,418.10	\$ 144,643.35	\$ 115,223.37
Leafy Spurge	5798.62	\$ 196,864.20	\$ 12,761.88	\$ 113,238.28	\$ 322,864.36	\$ 258,282.81
Salt Cedar	818.27	\$ 30,488.14	\$ 17,056.32	\$ 47,969.49	\$ 95,513.95	\$ 76,013.01
Totals	8596.94	\$ 309,455.01	\$ 47,940.78	\$ 205,625.87	\$ 563,021.66	\$ 449,519.19

Government Agencies

2014 Bureau of Land Management

BLM	acres	Labor \$	Equip \$	Herbicide \$	Total \$
General	85.75	\$ 8,417.87	\$ 1,808.40	\$ 2,004.53	\$ 12,230.80
Leafy Spurge	675	\$ 44,709.34	\$ 37.40	\$ 19,175.48	\$ 63,922.22
Salt Cedar	23.2	\$ 1,410.70	\$ 700.72	\$ 694.01	\$ 2,805.43
Totals	783.95	\$ 54,537.91	\$ 2,546.52	\$ 21,874.02	\$ 78,958.45

2014 State Lands

State	acres	Labor \$	Equip \$	Herbicide \$	Total \$
General	41	\$ -	\$ -	\$ 1,263.26	\$ 1,263.26
Leafy Spurge	1506.2	\$ 40,055.44	\$ 792.32	\$ 27,717.39	\$ 68,565.15
Salt Cedar	13.6	\$ 1,023.83	\$ 216.72	\$ 1,056.07	\$ 2,296.62
Totals	1560.8	\$ 41,079.27	\$ 1,009.04	\$ 30,036.72	\$ 72,125.03

2014 Forest Service

Forest Service	acres	Labor \$	Equip \$	Herbicide \$	Total \$
General	33.25	\$ 8,153.81	\$ 1,049.28	\$ 791.49	\$ 9,994.58
Leafy Spurge	6	\$ 1,084.32	\$ 83.48	\$ 135.28	\$ 1,303.08
Totals	39.25	\$ 9,238.13	\$ 1,132.76	\$ 926.77	\$ 11,297.66

2014 Game & Fish

Game & Fish	acres	Labor \$	Equip \$	Herbicide \$	Total \$
General				\$ 396.48	\$ 396.48
Leafy Spurge	4	\$ 594.72	\$ 89.92	\$ 88.92	\$ 773.56
Totals	4	\$ 594.72	\$ 89.92	\$ 485.40	\$ 1,170.04

Johnson County Weed and Pest Control District

www.jcweedandpest.com