



2013 End of Year Report

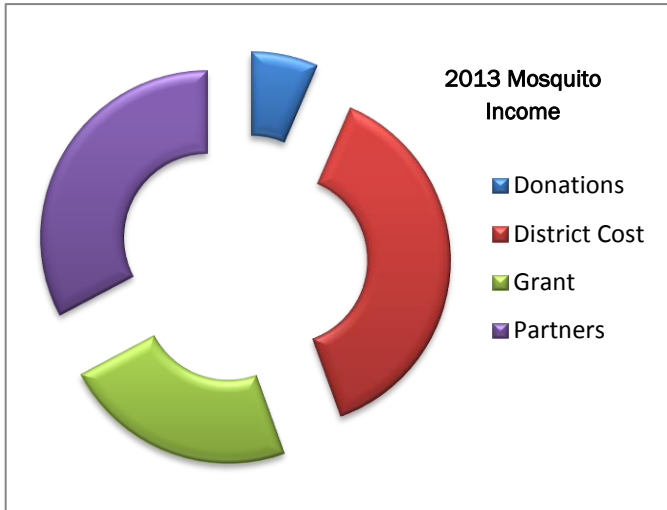
Johnson County Weed and Pest Control District Mission and Policy

The Johnson County Weed & Pest is committed to providing leadership and education for the long term management of noxious weeds & pests through prevention, biological, cultural, mechanical and chemical controls. We are dedicated to decreasing the impacts of invasive species on native plant and animal communities, private and public lands, and local economies. The Johnson County Weed & Pest strives to have effective programs for the management of noxious weeds and pests by promoting and coordinating management and control through integrated pest management techniques, cooperation with landowners, agencies, organizations, and by providing technical expertise and educational opportunities to all within the county.

- Mosquitoes - page 2
- Prairie dogs - page 2
- Field Certifications - page 2
- County Roads - page 3
- Comped weeds - page 3
 - Wy DOT - page 4
- Sprayer use - page 4
 - Coupons - page 4
- Time tracking - page 5
- Application Coverages - page 6
- Program percentages & dollars - page 7
 - Private Lands - page 7
 - Government Agencies- page 8
- Dalmation Toadflax Spray & Bio Control - page 8
- Tall Larkspur program - page 9
- Grasshopper program - page 9

Annual Mosquito Abatement Program in the Clear Creek Drainage.

We apply larvacide throughout the summer to all mosquito infested water bodies from Buffalo to Ucross and in the City of Buffalo. The larvaciding program has been very successful over the past few years with no impact to bees and without the invasiveness of an aerial program. We do have ground fogging equipment, also, if needed and requested if an isolated adult outbreak occurs. In addition to the application in the Clear Creek drainage there is an available county wide cost share program on larvacide.



County wide mosquito program		
	Income	Expense
Grant	\$ 14,550.00	
Landowners	\$ 4,160.00	
JC Weed & Pest	\$ 24,147.95	
Partners	\$ 13,588.85	
In Kind	\$ 7,420.00	\$ 7,420.00
Labor		\$ 14,559.11
postage/supplies		\$ 54.82
Pesticides		\$ 17,791.51
Equipment		\$ 15,182.18
Tire Recycling		\$ 5,776.00
Admin/Education		\$ 3,083.18
Totals	\$ 63,866.80	\$ 63,866.80

2013 Prairie Dog Cost Share

Prairie Dogs 2013					
Units	Rodenticide	Price Each	Total Cost	District Cost	LO Cost
89	Fumitoxin	\$ 24.50	\$ 2,180.50	\$ 2,180.50	\$ -
12	Gas Cartridge	\$ 1.45	\$ 17.40	\$ -	\$ 17.40
493	33 lb - ZP Oats	\$ 34.56	\$ 17,038.08	\$ 17,038.08	\$ -
30	33 lb - ZP Oats	\$ 33.00	\$ 990.00	\$ 990.00	\$ -
93	Rozol	\$ 72.00	\$ 6,696.00	\$ 5,301.00	\$ 1,395.00
24	Rozol (bags)	\$ 113.50	\$ 2,724.00	\$ 2,364.00	\$ 360.00
9343.7	treated rebate	\$ 5.00	\$ 46,718.50	\$ 46,718.50	\$ -
	Totals		\$ 76,364.48	\$ 74,592.08	\$ 1,772.40

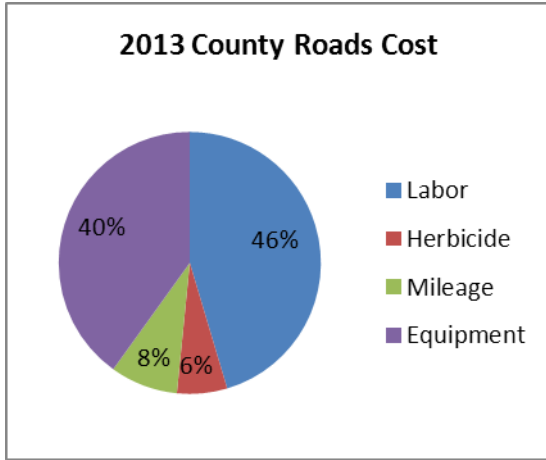
The District offers a rebate program to landowners that hire a Commercial Applicator to treat Prairie Dogs using ZP Oats on their private land.

2013 Field Certifications

Rod certified fields for 7 hay/straw producers in the County.

2013 County Roads

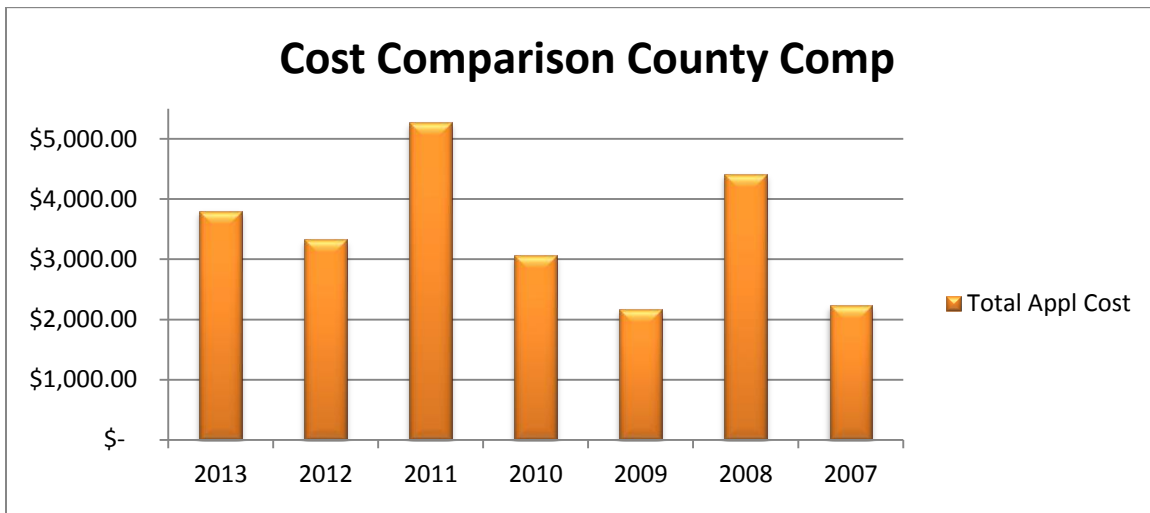
In 2013 the District treated 28.03 acres on county roads.



2013 Co Road Cost	
Labor	\$ 4,298.54
Herbicide	\$ 586.28
Mileage	\$ 790.72
Equipment	\$ 3,794.40
Total Cost	\$ 9,469.94

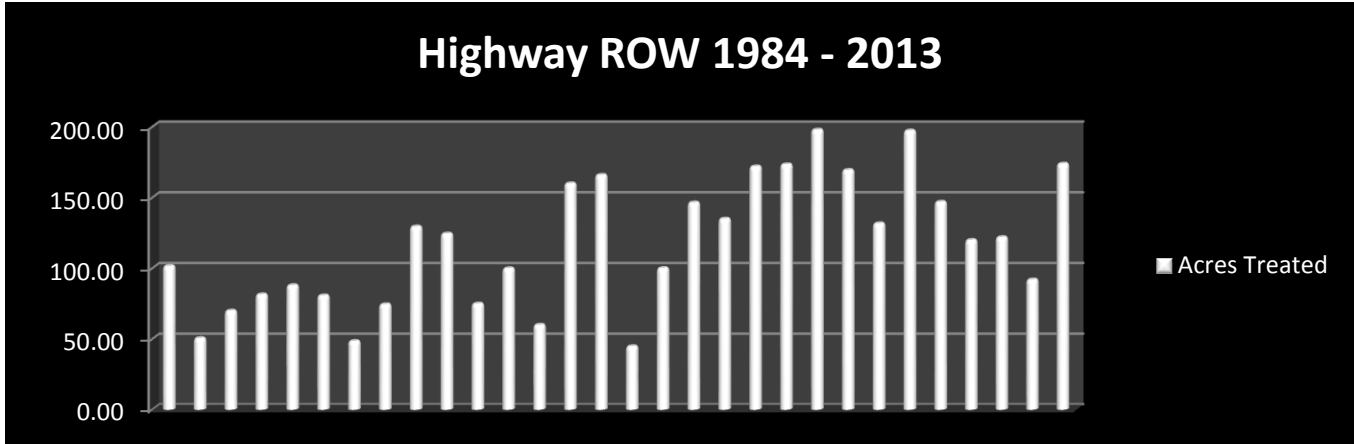
2013 County Comp

County Comp includes spraying of county properties, cleanup on private lands and small spray jobs that do not fit in our cost share programs.



2013 Wyoming Department of Transportation

The District contracts the spraying by bid of the state highway ROW in Johnson County. The State Allocation was \$ 22,960.00 for 2013. WYDOT added new safety regulations for 2013, an additional 71.5 hours over the average were required to meet those safety requirements. A total of 536 hours were spent treating 174 acres.



2013 Sprayer use and donations

The District has the following equipment for use, on a donation basis.

Backpack		200 gallon		Boom Sprayer	
Year	Days Used	Year	Days Used	Year	Days Used
2009	127	2009	15	2009	38
2010	40	2010	12	2010	40
2011	289	2011	0	2011	23
2012	88	2012	4	2012	56
2013	185	2013	89	2013	18

25 g ATV sprayer		Trailer Sprayer		Mosquito Fogger	
Year	Days Used	Date In	Days Used	Year	Days Used
2009	93	2009	43	2009	10
2010	146	2010	0	2010	23
2011	108	2011	0	2011	69
2012	109	2012	0	2012	33
2013	259	2013	66	2013	150

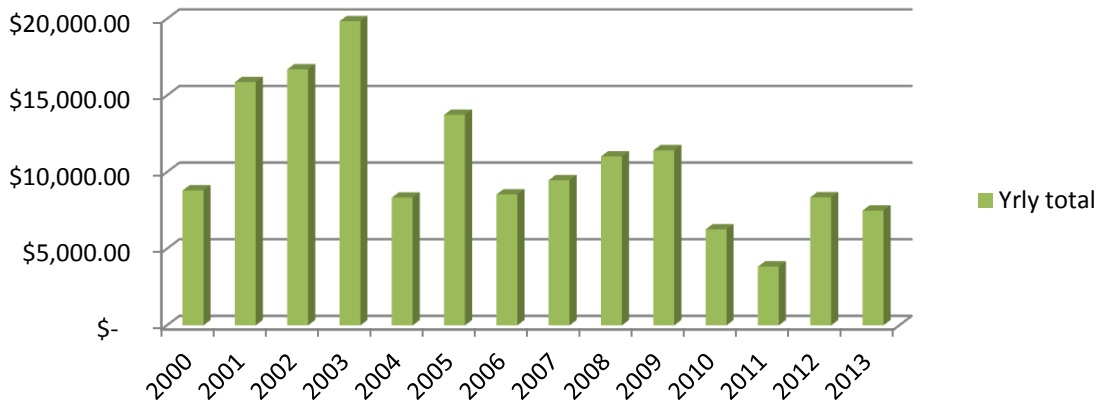
150 gallon		50 gallon sprayer		Insecticide Only	
Year	Days Used	Year	Days Used	Year	Days Used
2009	58	2009	0	2009	29
2010	76	2010	35	2010	4
2011	24	2011	20	2011	5
2012	77	2012	19	2012	6
2013	23	2013	77	2013	2

2013 Vendor Coupon Cost Share

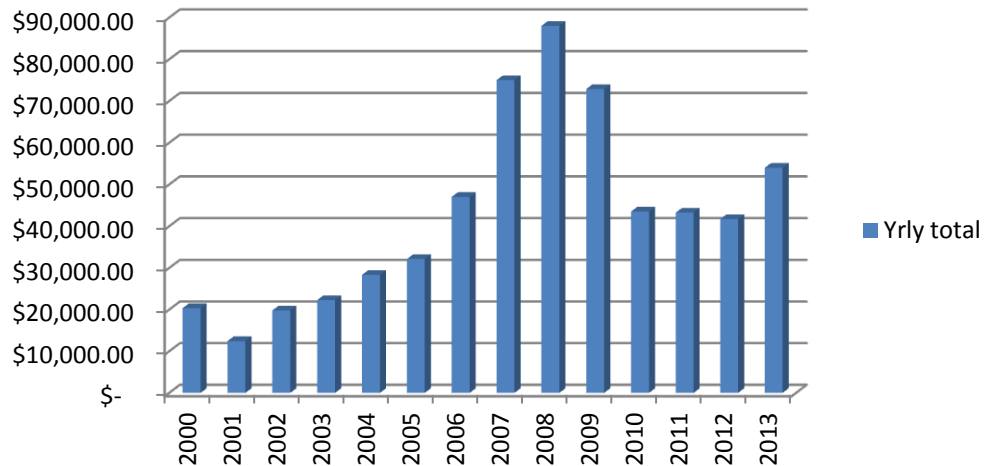
District cost share on Designated and Declared weeds is 80/20 with the exception of Leafy spurge and Salt Cedar, the District pays 100%, as allowed by statute.

General	units	District \$	L.O. \$	Total \$	Leafy Spurge	units	District \$	L.O. \$	Total \$
2,4-D	93	\$ 1,201.04	\$ 304.11	\$ 1,505.15	2,4-D	46	\$ 752.10	\$ -	\$ 752.10
Banvel	80	\$ 3,476.80	\$ 868.80	\$ 4,345.60	Banvel	7.5	\$ 407.40	\$ -	\$ 407.40
Chaparral	336.25	\$ 12,765.59	\$ 5,763.33	\$ 18,528.92	Imazapic 2 SL	1	\$ 132.16	\$ -	\$ 132.16
Curtail	50	\$ 1,646.20	\$ 437.00	\$ 2,083.20	Rangestar	5	\$ 145.60	\$ -	\$ 145.60
Escort	160	\$ 574.24	\$ 152.00	\$ 726.24	Tordon	122.5	\$ 6,049.20	\$ -	\$ 6,049.20
Forefront	242.5	\$ 12,339.87	\$ 3,249.50	\$ 15,589.37			\$ 7,486.46		\$ 7,486.46
Milestone	18.25	\$ 4,722.80	\$ 311.53	\$ 5,034.33					
MSM	1832	\$ 5,268.35	\$ 1,337.36	\$ 6,605.71					
Opti-Amine	117.5	\$ 1,458.68	\$ 710.88	\$ 2,169.56	Salt Cedar				
Rangestar	4.5	\$ 110.13	\$ 26.19	\$ 136.32	Bark Oil	2.5	\$ 28.70	\$ -	\$ 28.70
Roundup EqI	220	\$ 2,758.80	\$ 690.80	\$ 3,449.60					
Telar	16	\$ 186.40	\$ 46.56	\$ 232.96					
Tordon	307.5	\$ 7,538.26	\$ 3,031.95	\$ 10,570.21					
		\$ 54,047.16	\$ 16,930.01	\$ 70,977.17					

Leafy Spurge Vendor Coupons \$ spent by District



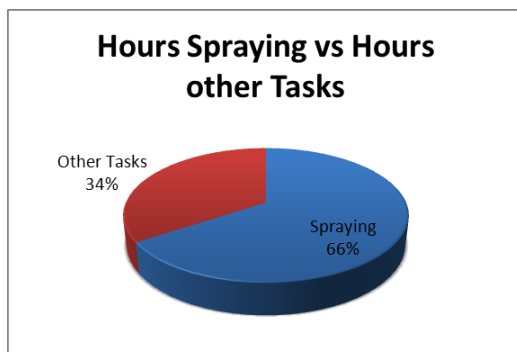
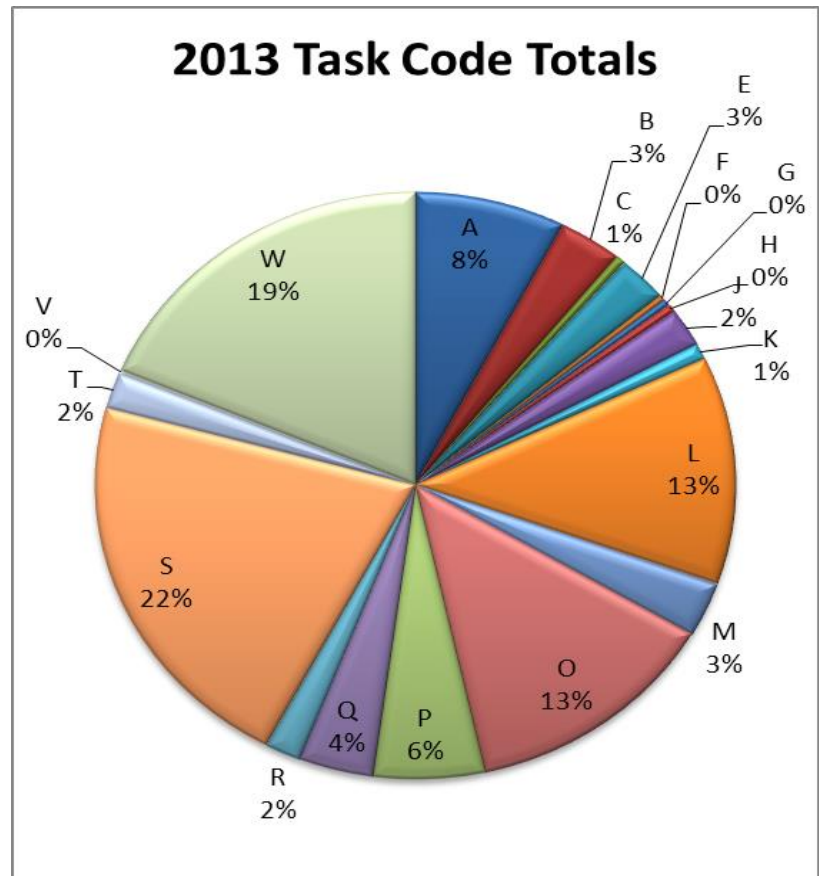
General Vendor Coupon \$ spent by District



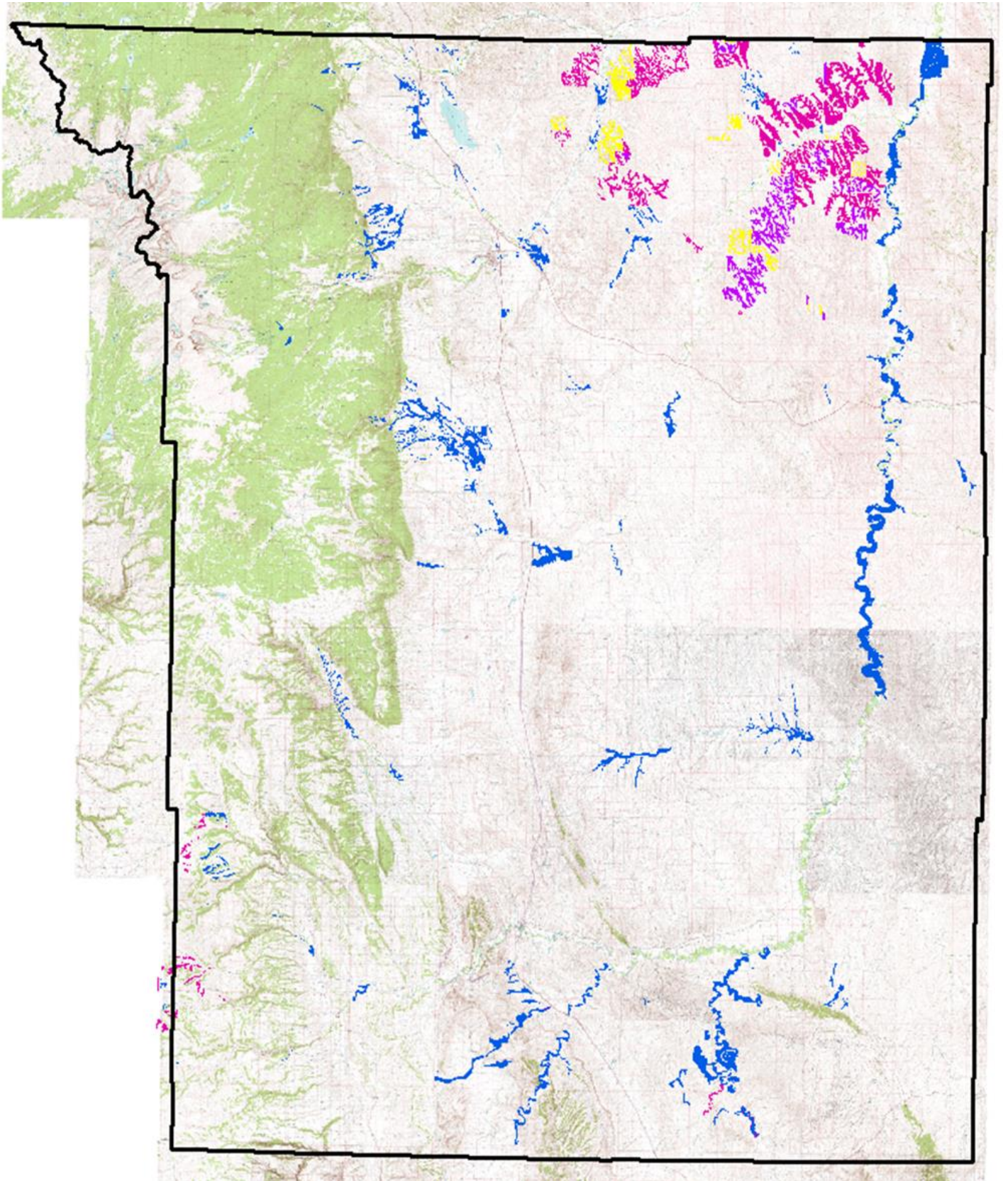
2013 Employees Time Spent

The District has assigned the following task codes in order to track where the employees time is spent. The graph includes all employees time. We also assign labor rates and track each task code for each labor rate.

Code	Task	Code	Task
A	Adminstrative	L	Leafy Spurge
B	Bonus and Holiday	M	Mosquito
C	County Comp Application	O	Office
D	Data Collection	P	Shop
E	Education	Q	Bookkeeping
F	Customer Relations	R	County Roads
G	GIS	S	Salt Cedar
H	Health	T	Tracking Archives
I	Incomplete day	V	Survey Salt Cedar
J	Personal leave	W	Weed Spraying
K	Kill Prairie Dogs		

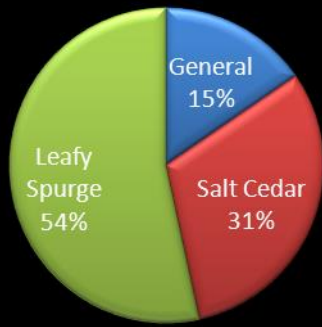


8,048 acres treated – 93,323 acres covered by ground crews and aerial treatments.

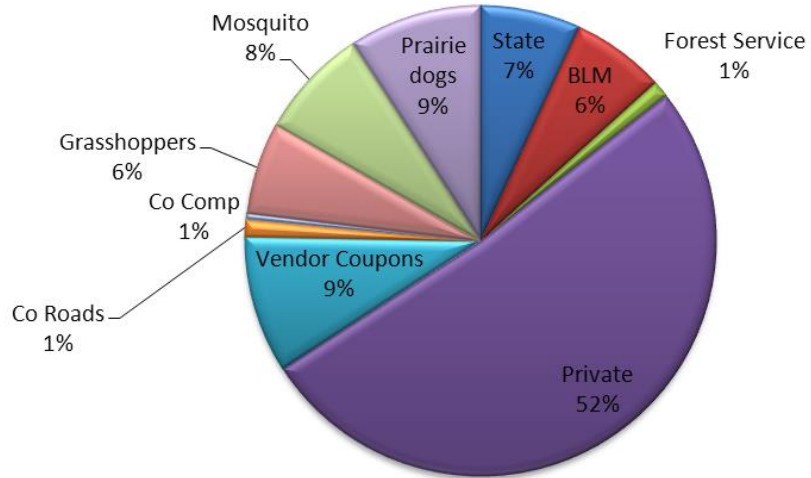


The above map shows the acres covered by the District in 2013. 431 application records were processed during the year. The following graphs show the percentage based on acres of applications and program dollars.

Application Percentage



Program Dollars



The pie chart above represents Total Program Dollars. This includes District and match dollars.

Private	acres	Labor \$	Equip \$	Herbicide \$	Total \$
General	889.3	\$ 56,394.21	\$ 16,433.91	\$ 16,433.91	\$ 89,095.92
Leafy Spurge	2588.5	\$ 121,159.76	\$ 8,888.62	\$ 33,292.30	\$ 163,340.68
Salt Cedar	2034	\$ 32,613.47	\$ 26,302.94	\$ 73,976.22	\$ 132,892.63
Totals	5511.8	\$ 210,167.44	\$ 51,459.36	\$ 123,702.43	\$ 385,329.23

Private 2013	Total	District \$	Cooperator \$	Acres
General	\$ 114,633.81	\$ 90,163.71	\$ 24,470.10	1664.33
Leafy Spurge	\$ 165,529.56	\$ 133,445.93	\$ 32,322.36	2601.45
Salt Cedar	\$ 175,386.10	\$ 149,842.15	\$ 25,543.95	2034

Government Agencies

2013 Bureau of Land Management

BLM	acres	Labor \$	Equip \$	Herbicide \$	Total \$
General	22.6	\$ 7,920.20	\$ 455.28	\$ 416.00	\$ 8,791.48
Leafy Spurge	527	\$ 31,082.32	\$ 113.72	\$ 5,903.69	\$ 37,099.73
Salt Cedar	52	\$ 1,835.32	\$ 521.20	\$ 2,142.71	\$ 4,499.23
Totals	601.6	\$ 40,837.84	\$ 1,090.20	\$ 8,462.40	\$ 50,390.44

2013 State Lands

State	acres	Labor \$	Equip \$	Herbicide \$	Total \$
General	65	\$ -	\$ -	\$ 1,239.56	\$ 1,239.56
Leafy Spurge	773	\$ 35,118.42	\$ 874.54	\$ 8,616.56	\$ 44,609.52
Salt Cedar	186	\$ 2,523.06	\$ 2,578.68	\$ 6,281.27	\$ 11,383.01
Totals	1024	\$ 37,641.48	\$ 3,453.22	\$ 16,137.39	\$ 57,232.09

2013 Forest Service

Forest Service	acres	Labor \$	Equip \$	Herbicide \$	Total \$
General	23.7	\$ 5,920.80	\$ 879.87	\$ 475.09	\$ 7,275.76
Leafy Spurge	5	\$ 2,033.13	\$ 86.80	\$ 104.30	\$ 2,224.23
Totals	28.7	\$ 7,953.93	\$ 966.67	\$ 579.39	\$ 9,499.99

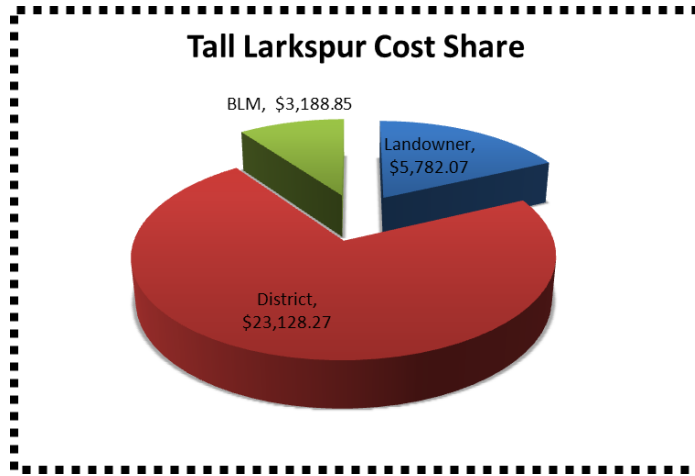
2013 Dalmation Toadflax Program

In 2012 the District partnered with the LCD in completing a survey on Dalmation Toadflax. As a result of that survey the District implemented a Dalmation Toadflax spray program, as well as, a Bio Control program in 2013.

2013 Dalmation Toadflax Program Cost					Total cost \$ 2,815.75								
Date		Acres	Labor	\$ per Hour	Equip	Hours	\$ per Hour		Herb.	units	\$ per unit		
7/11/2013	Spraying	7	9	\$ 17.38	\$ 156.42	ATV	3.5	\$ 30.00	\$ 105.00	OptiAmine	0.25	\$ 30.24	\$ 7.56
			36	\$ 12.34	\$ 444.24	Gator	1.5	\$ 32.00	\$ 48.00	Tordon	1.75	\$ 49.28	\$ 86.24
						Miles	40	\$ 0.56	\$ 22.40	Telar XP	2	\$ 14.56	\$ 29.12
										Escort	3	\$ 4.76	\$ 14.28
										Vision	0.625	\$ 92.62	\$ 57.89
6/4/2013	Bio Control		10	\$ 17.38	\$ 173.80	ATV	5.6	\$ 18.00	\$ 100.80	Insects	1	\$ 1,570.00	\$ 1,570.00
					\$ 774.46								
								\$ 276.20					
										Herb & Insects			\$ 1,765.09

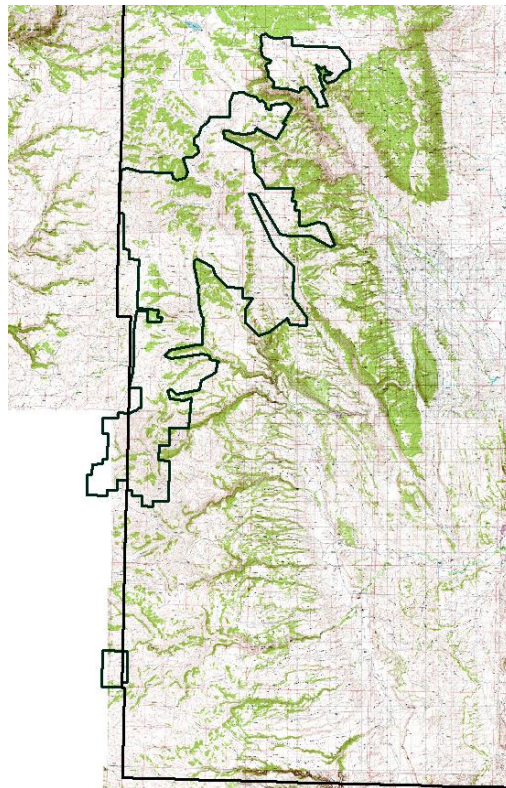
2013 Tall Larkspur Program

The District treated 1225 acres in Johnson County and 452 acres in Washakie County by a combination of aerial and ground applications.



2013 Grasshopper Program

The District treated 27,520 acres on the Big Horn Mountains in, both Johnson County and Washakie County for Grasshoppers in 2013. The total cost of the program was \$ 52,795.52.



Johnson County Weed and Pest Control District

www.jcweedandpest.com