

2013 Virtual Tour

Activity Update
Johnson County Weed & Pest

Programs & Projects

- ▣ Whitetop
- ▣ Coupons
- ▣ FS & BLM
- ▣ S. thistle, Knapweed
- ▣ Prairie dogs
- ▣ Mosquitoes
- ▣ Education programs
- ▣ Field Certifications
- ▣ *D Toadflax program*
- ▣ County Roads
- ▣ Comped weeds/pests
- ▣ Salt cedar
- ▣ Bio-control
- ▣ Spurge treatment
- ▣ GIS
- ▣ Wy DOT
- ▣ Russian Olive
- ▣ Larkspur
- ▣ Cheatgrass

Funding

FY 12/13	General	Leafy Spurge
Total Budgeted	\$4,320,161.00	\$2,504,937.00
Actual Income	\$4,608,052	\$2,659,278.20
Actual Expenses	\$996,265.49	\$769,503.69
Emergency Reserve	\$3,000,000.00	\$1,735,534.56
Carryover to FY 13/14	\$611,891.00	\$154,520.00

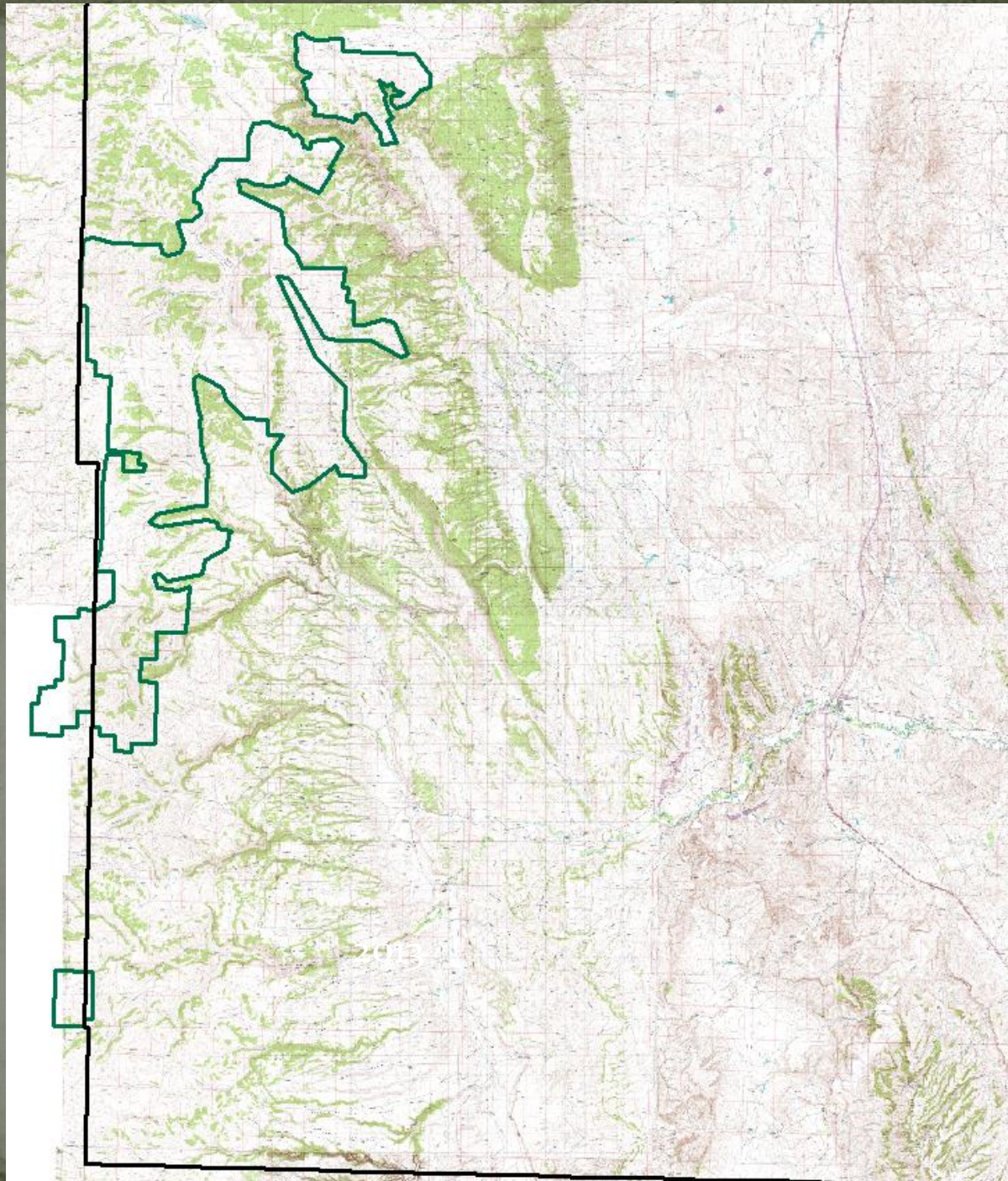
Expenses Breakdown

FY 11/12	LS/SC	General	Total	Percentage
Admin	\$66,092.33	\$65,648.48	\$131,740.81	7.5%
Seasonal crews	\$75,539.34	\$56,276.55	\$131,815.89	7.5%
Office	\$0	\$11,260.78	\$11,260.78	0.6%
Operating	\$0	\$66,053.64	\$66,053.64	3.7%
Programs	\$363,406.58	\$778,411.37	\$1,141,817.90	64.7%
Other	\$0	\$5,896.29	\$5,896.29	0.3%
Insurance	\$0	\$4,370.88	\$4,370.88	0.2%
Cap outlay	\$0	\$8,347.50	\$8,347.50	0.5%
Em Reserve	\$264,465.44	0	\$264,465.44	15.0%
TOTAL	\$769,503.69	\$996,265.49	\$1,765,769.10	

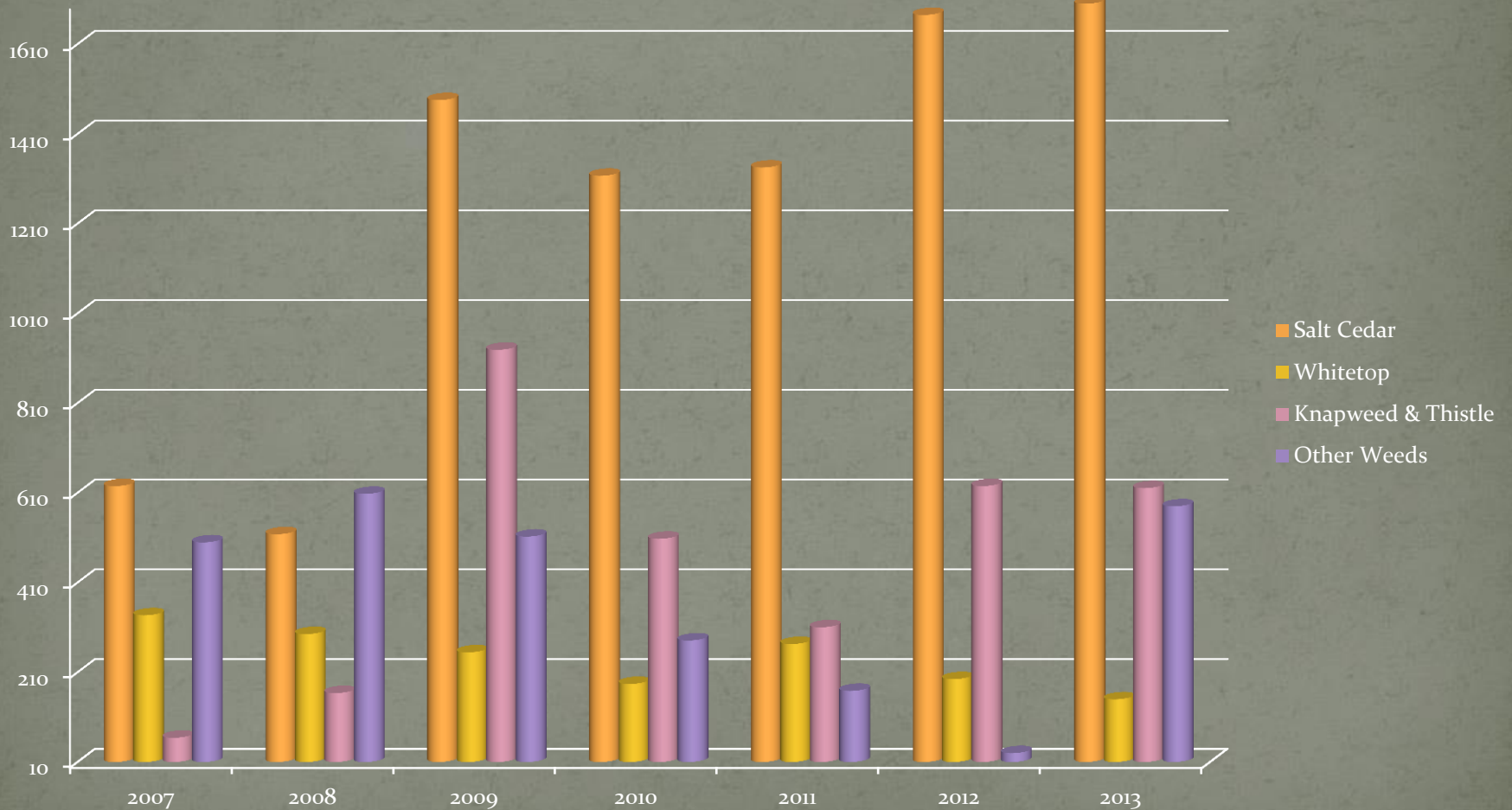
	FY 09/10	FY 10/11	FY 11/12	FY 12/13
Admin	\$103,405.56	\$112,160.12	\$116,396.46	\$131,740.81
Seasonals	\$116,310.17	\$118,382.39	\$104,490.56	\$131,815.89
Office	\$13,974.28	\$16,942.88	\$12,607.18	\$11,260.78
Operating	\$54,267.46	\$50,244.54	\$52,765.77	\$66,053.64
Programs	\$2,169,736	\$1,006,891.80	\$1,438,700.78	\$1,406,283.30
Other	\$9,017.83	\$12,109.77	\$6,872.26	\$5,896.29
Insurance	\$5,038.75	\$2,709.00	\$4,885.34	\$4,370.88
Cap Outlay	\$41,551.92	\$29,388.70	\$22,372.83	\$8,347.50
TOTAL	\$2,513,502	\$1,348,829.20	\$1,759,091.00	\$1,765,769.10

2013
Grasshoppers

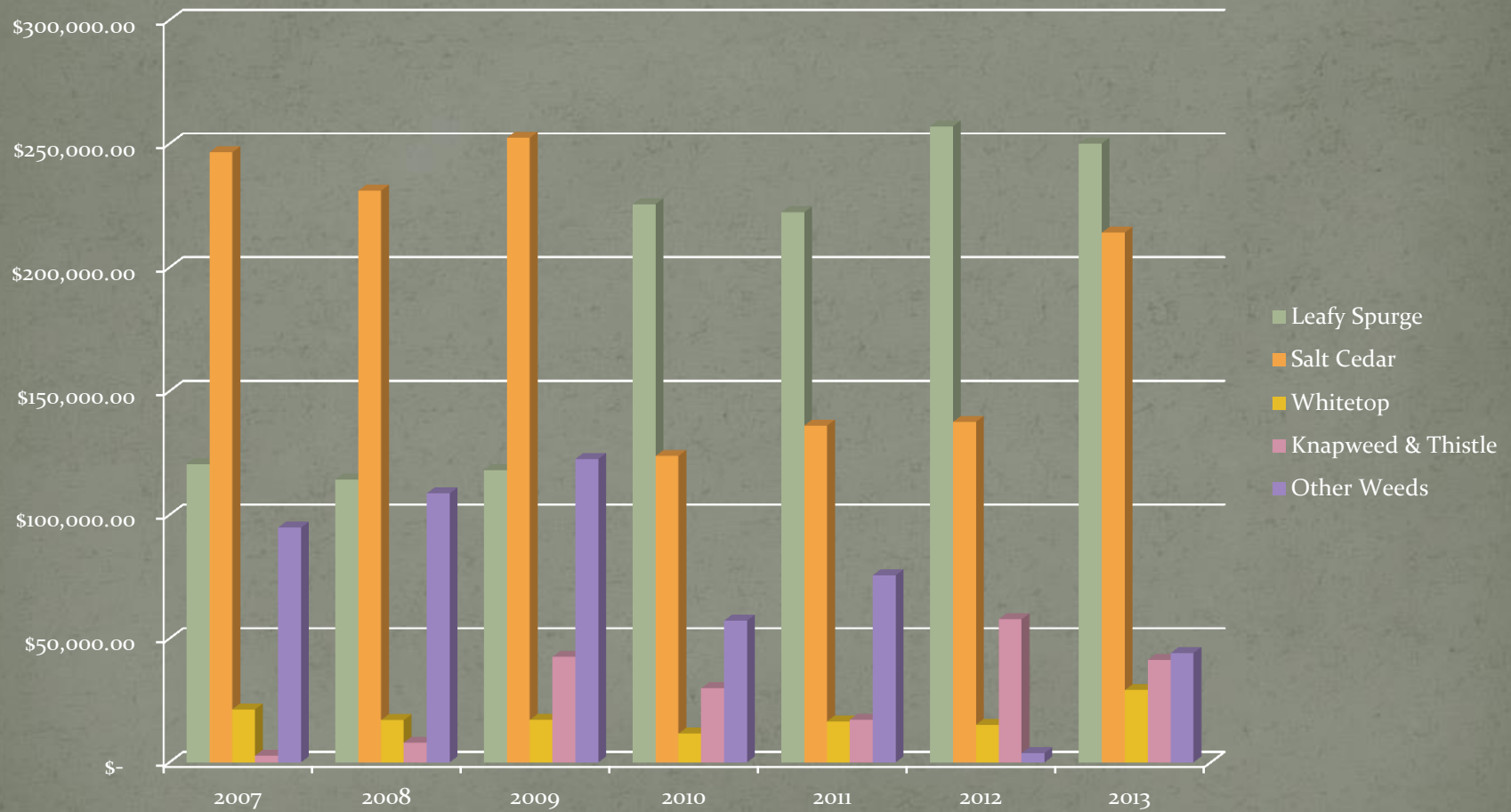
27,520 Acres treated
RAATS Approach



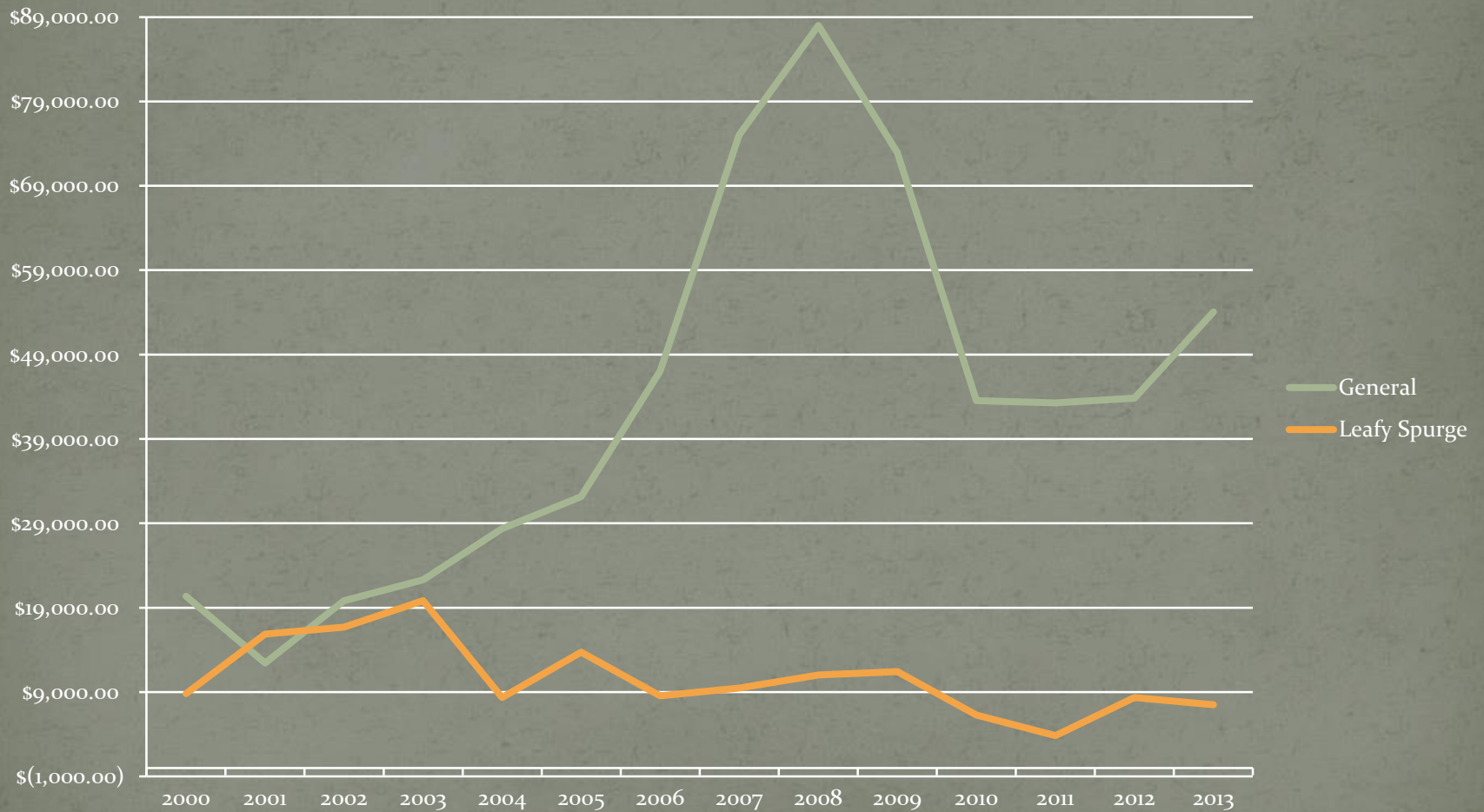
Acres treated by Year



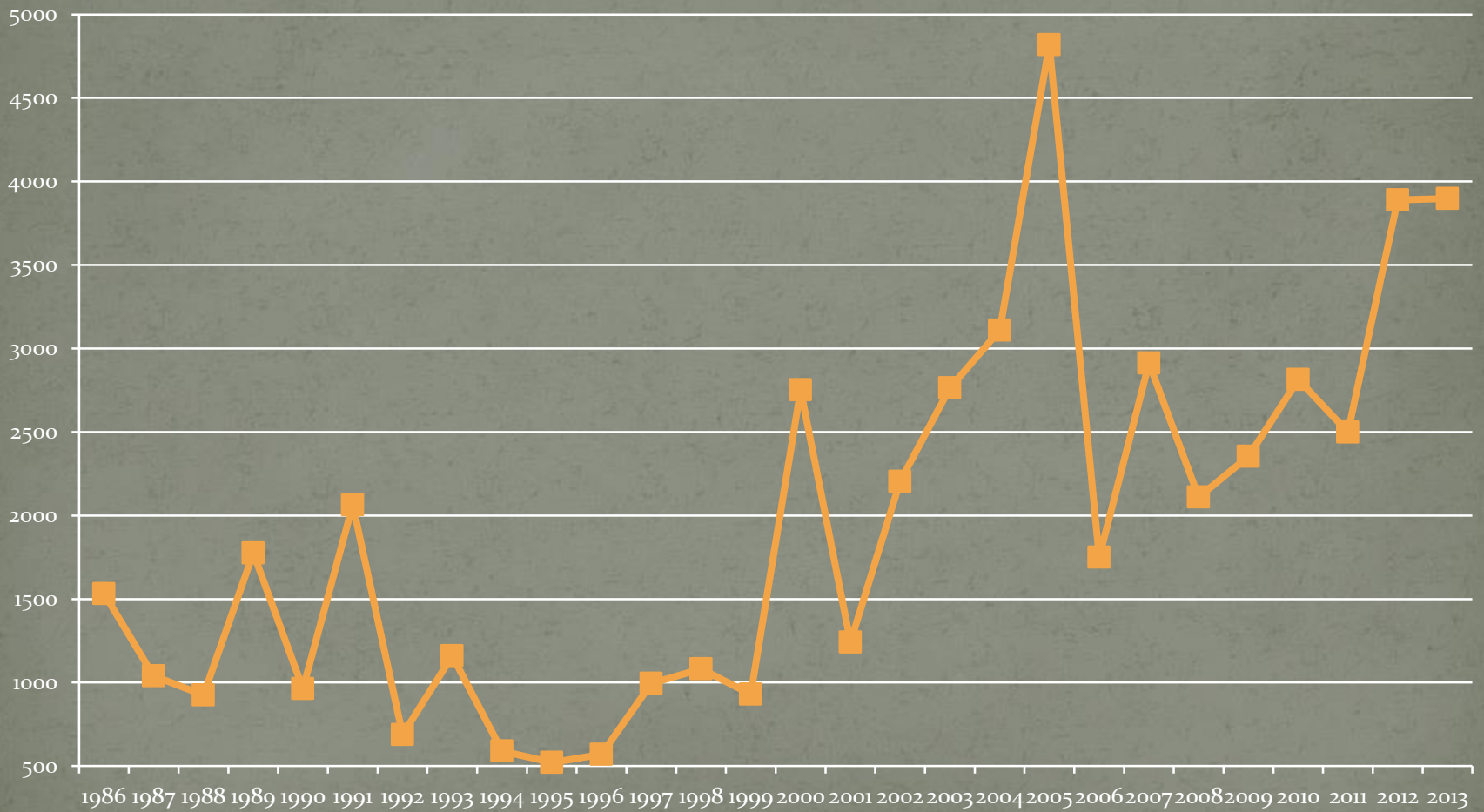
Dollars spent per year by weed



Vendor Coupons Issued



Leafy Spurge Acres Treated



Crew dynamics

- Kaycee Contract Crew
- 2 person ATV Crew
- 7 Backpack sprayers
- Mosquito technician
- 2 Helicopters
- ROW contract Crew
- Me

Meet the Crew





Leafy spurge locations Crazy Woman Canyon- Extreme backpack spraying!













































Cato Fire

Legend

Johnson_County

Spray Project

<all other values>

Trtd_v_Un

Treated

Untreated

Cato Fire Cost Share

	Contribution	Acres
LDCD	\$ 105,880.26	
State	\$ 33,761.55	3,000
BLM	\$ 15,000.00	570
Sheridan County	\$ 4,635.00	515
Johnson County	\$ 106,414.61	19,415
Total	\$ 265,691.42	23,500

27,680 Total acres burned







