

# 2012 Virtual Tour

---

Activity Update  
Johnson County Weed & Pest

# Programs & Projects

- ▣ Whitetop
- ▣ Coupons
- ▣ Rock Creek Grant
- ▣ Muddy Creek Grant
- ▣ FS & BLM
- ▣ S. thistle, Knapweed
- ▣ Prairie dogs
- ▣ Mosquitoes
- ▣ Education programs
- ▣ Field Certifications
- ▣ County Roads
- ▣ Comped weeds/pests
- ▣ Salt cedar
- ▣ Bio-control
- ▣ Spurge treatment
- ▣ GIS
- ▣ Wy DOT
- ▣ Russian Olive
- ▣ Larkspur
- ▣ Dalmation Toadflax
- ▣ Cheatgrass

# Funding

FY 11/12	General	Leafy Spurge
Total Budgeted	\$3,975,051.00	\$2,964,523.00
Actual Income	\$4,267,418.65	\$2,679,644.65
Actual Expenses	\$1,151,383.68	\$607,707.32
Emergency Reserve	\$2,000,000.00	\$2,000,000.00
Carryover to FY 12/13	\$1,116,002.57	\$71,937.00

# Expenses Breakdown

FY 11/12	LS/SC	General	Total	Percentage
Admin	\$58,515.30	\$57,881.16	\$116,396.46	6.6%
Seasonal crews	\$45,926.32	\$58,564.24	\$104,490.56	5.9%
Office	\$0	\$12,607.18	\$12,607.18	0.7%
Operating	\$0	\$52,765.77	\$52,765.77	3.0%
Programs	\$503,265.70	\$935,435.08	\$1,438,700.78	83.5%
Other	\$0	\$6,872.26	\$6,872.26	0.4%
Insurance	\$0	\$4,885.34	\$4,885.34	0.3%
Cap outlay	\$0	\$22,372.83	\$22,372.83	1.3%
TOTAL	\$607,707.32	\$1,151,383.68	\$1,759,091.00	



# Expense breakdown- previous year

FY 10/11	LS/SC	General	Total	Percentage
Admin	\$57,031.06	\$55,129.06	\$112,160.12	8.3%
Seasonals	\$58,518.96	\$59,863.43	\$118,382.39	8.8%
Office	\$0	\$16,942.88	\$16,942.88	1.2%
Operating	\$0	\$50,244.54	\$50,244.54	3.7%
Programs	\$300,493.92	\$706,397.96	\$1,006,891.80	74.7%
Other	\$0	\$12,109.77	\$12,109.77	0.9%
Insurance	\$0	\$2,709.00	\$2,709.00	0.2%
Cap Outlay	\$0	\$29,388.70	\$29,388.70	2.2%
TOTAL	\$416,043.94	\$932,785.34	\$1,348,829.20	

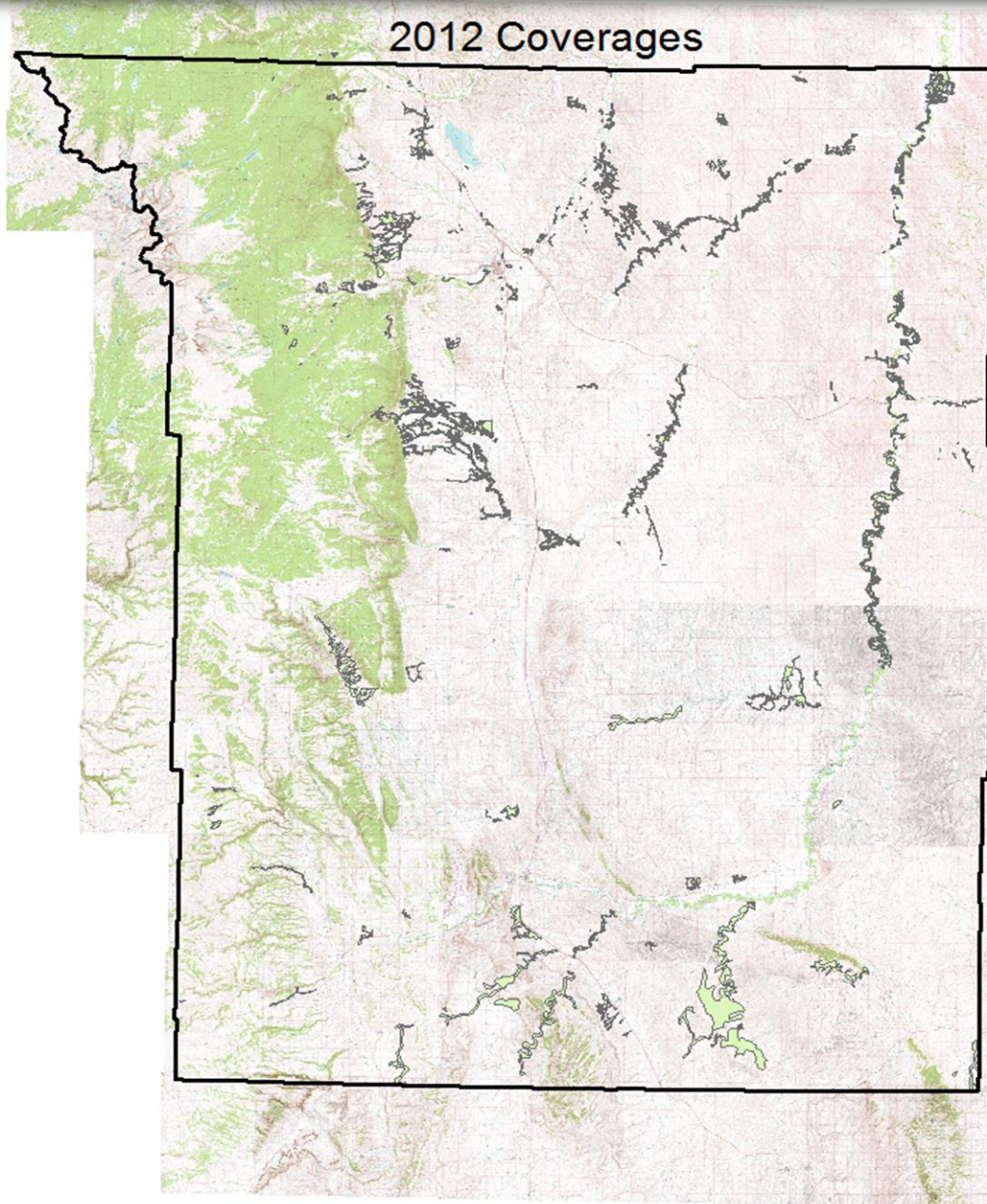
	FY 09/10	FY 10/11	FY 11/12
Admin	\$103,405.56	\$112,160.12	\$116,396.46
Seasonals	\$116,310.17	\$118,382.39	\$104,490.56
Office	\$13,974.28	\$16,942.88	\$12,607.18
Operating	\$54,267.46	\$50,244.54	\$52,765.77
Programs	\$2,169,736	\$1,006,891.80	\$1,438,700.78
Other	\$9,017.83	\$12,109.77	\$6,872.26
Insurance	\$5,038.75	\$2,709.00	\$4,885.34
Cap Outlay	\$41,551.92	\$29,388.70	\$22,372.83
TOTAL	\$2,513,502	\$1,348,829.20	\$1,759,091.00

# Points to compare yearly expenses

- Operating costs went down, which includes fuel, warehouse supplies, equipment repair and equipment leases.
- Other includes building improvement, travel, council dues, board mileage, Education/PR, meeting registration and drug testing program.
- Office expenses include supplies, advertising, office equipment repair & supplies, Phone & utilities, and postage costs.
- Capital outlay costs went down
- Big grasshopper program in 2010 drove up program cost that year.
- Seasonal payroll expense down- not sure why but FY vs calendar year may be some of it and use of helicopter on SC fall 2011.



## 2012 Coverages



## 2012 Coverages

Acres treated- 3,725

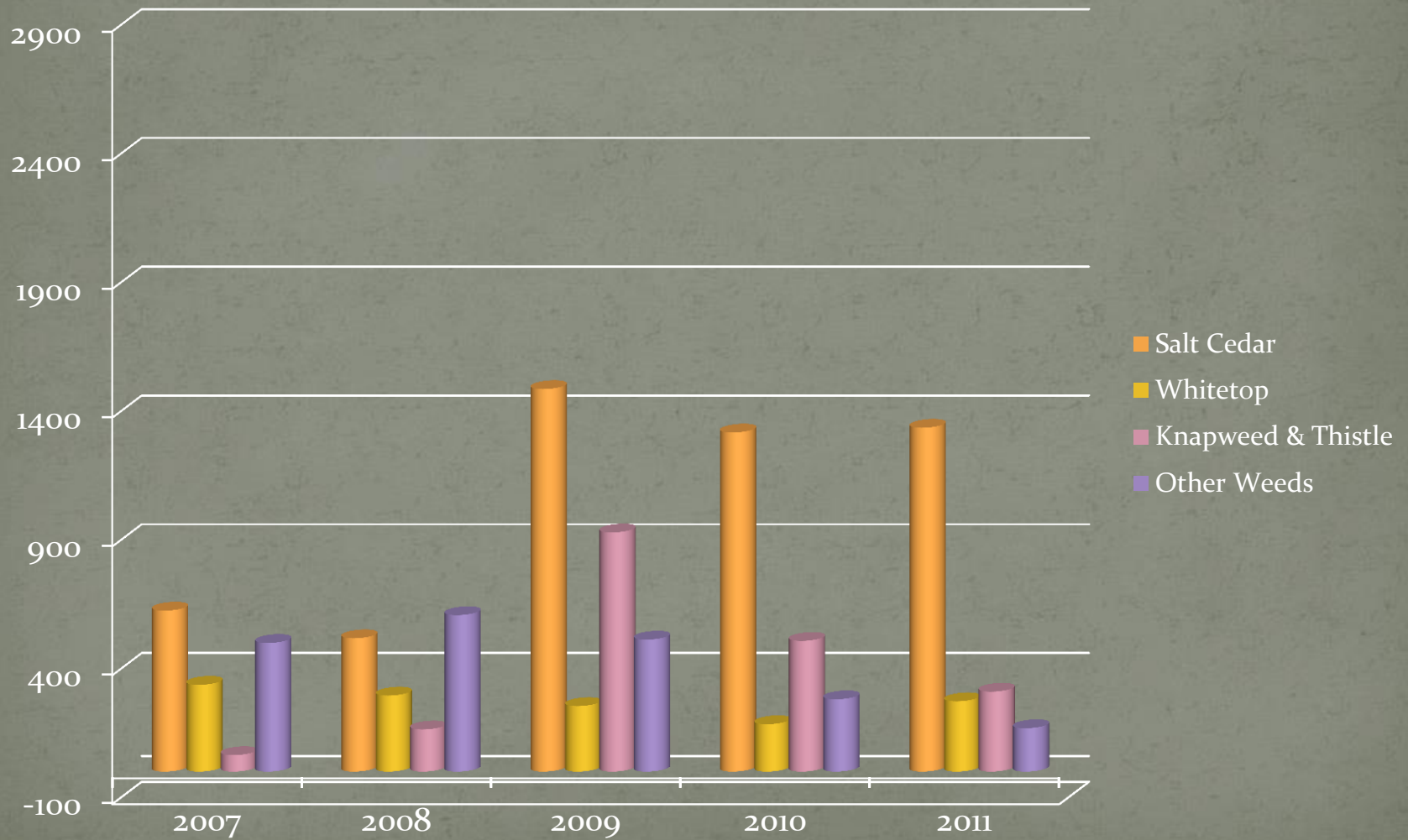
Acres covered- 40,758

Ground Crew work

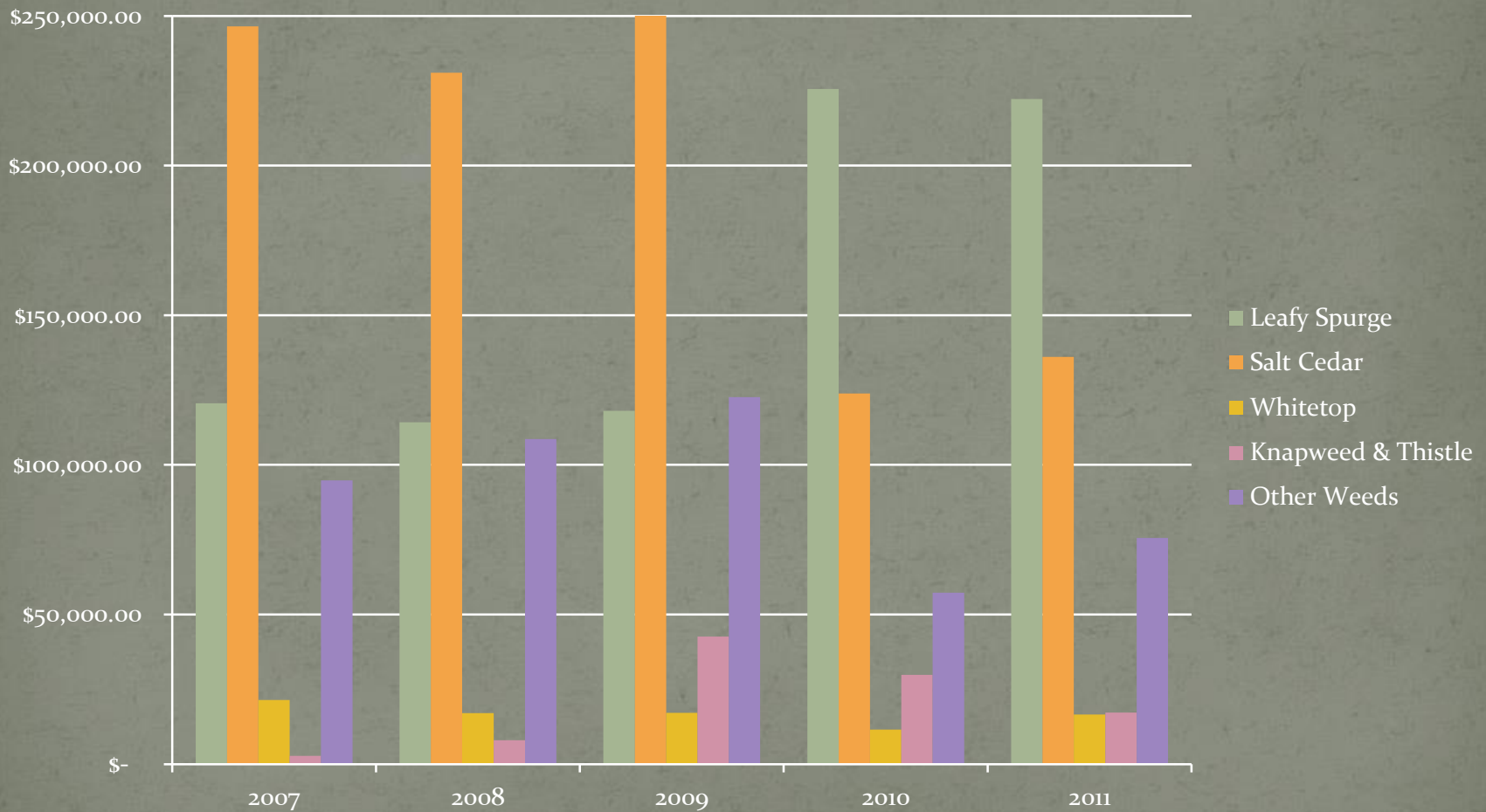
Aerial Treated-  
3000 ac LS  
1314 ac TL



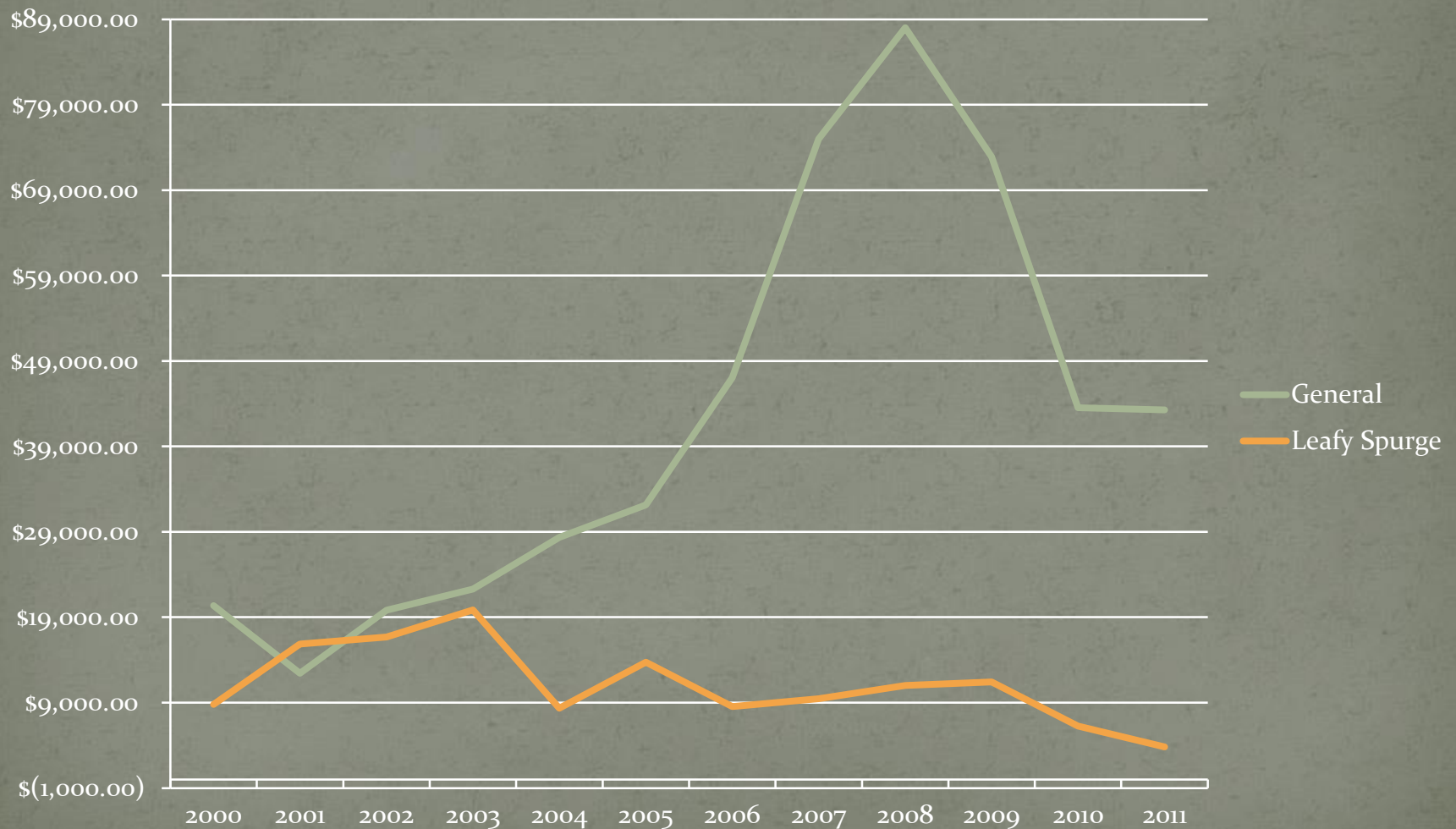
## Acres treated by Year



# Dollars spent per year by weed

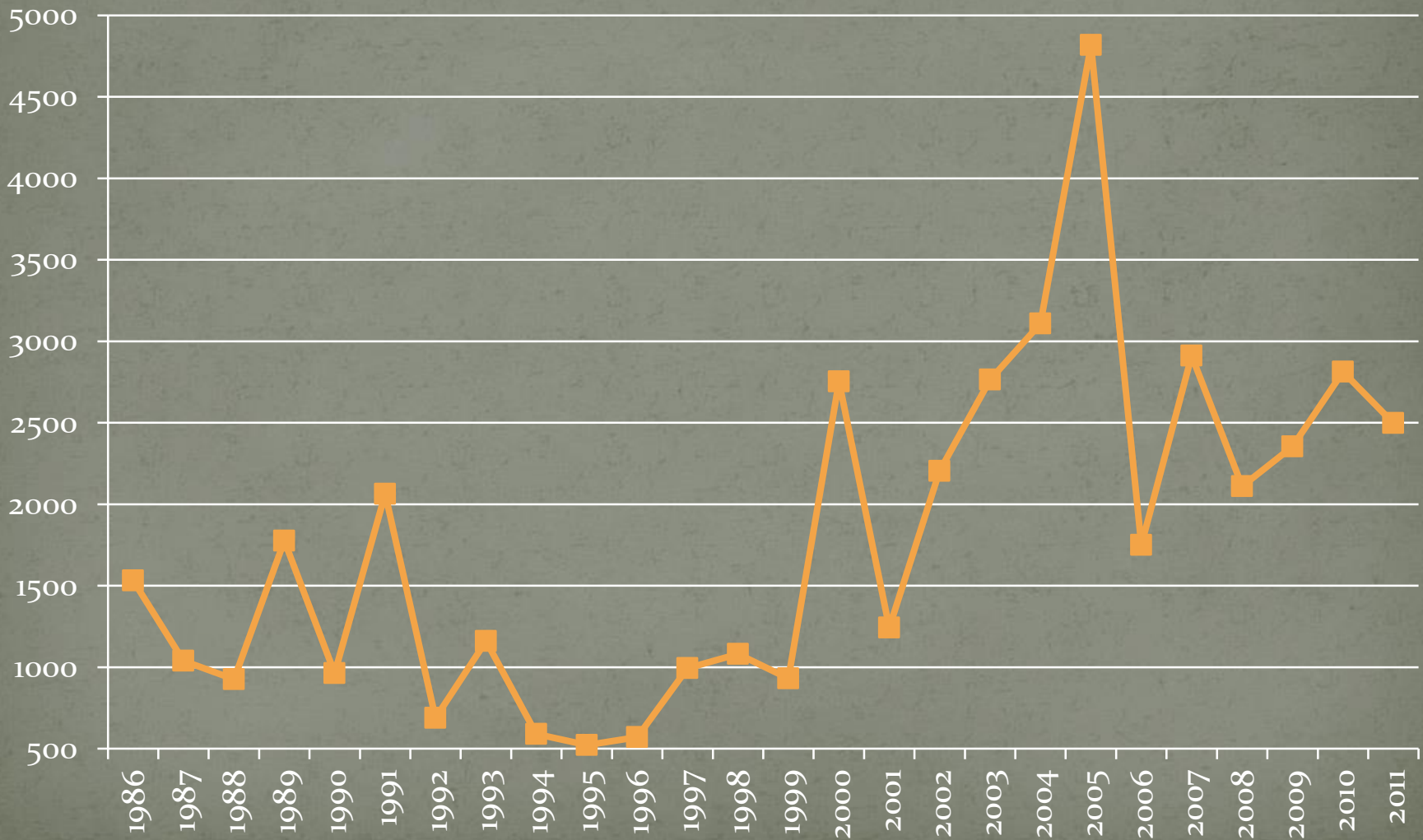


# Vendor Coupons Issued





# Leafy Spurge Acres Treated



# Crew dynamics

- Mosquito technician-one man
- 5 man foot crew with ATV
- 5 man foot crew without ATV
- Rover- treated county roads, some grasshoppers and filled in where needed
- Two man ATV crew for range work
- Contract helicopter for spurge and salt cedar
- Contract crew for DOT contract
- Contract ATV crew for salt cedar
- Me



College kids “Spring break” hand cutting and treating salt cedar.





The crew in camp before heading out for the 3<sup>rd</sup> and final day of treating larkspur.





## Tall larkspur treatment area



Believe it or not this was solid larkspur 2 years prior



One of our first insect release sites on leafy spurge in the early 1990's



As viewed in June 2012. this area has only been treated with herbicides  
A couple times since release. Insects effectively managing the infestation.



North end Powder River uncut, aerially treated.



Some re-growth from root crown, 1 yr after treatment.



North end of Powder River, had been cut, re-growth sprayed aurally.



Can't tell in photo but there is about 20% re-growth, 1 yr after treatment





Close up shot of area in previous slide



Scotch thistle control one year after treatment



This site was actually solid thistle 5 feet tall across this draw the year prior





Impressive skills of aerial applicator spraying Salt cedar on Salt Creek



Aerial treatment of re-grown salt cedar post cutting.







Vacation Sunrise!