



2011 End of Year Report

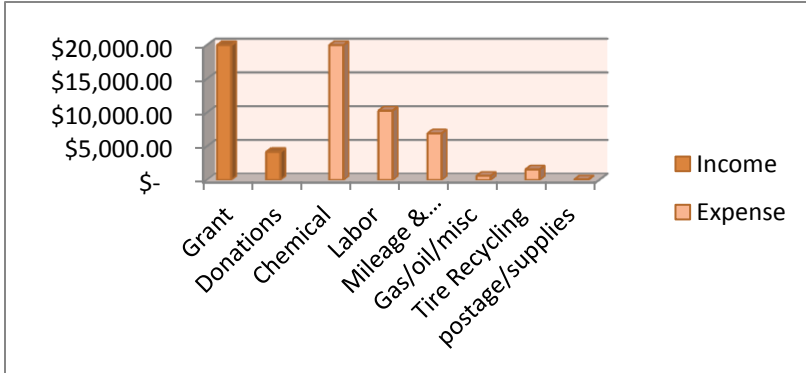
Johnson County Weed and Pest Control District Mission and Policy

The Johnson County Weed & Pest is committed to providing leadership and education for the long term management of noxious weeds & pests through prevention, biological, cultural, mechanical and chemical controls. We are dedicated to decreasing the impacts of invasive species on native plant and animal communities, private and public lands, and local economies. The Johnson County Weed & Pest strives to have effective programs for the management of noxious weeds and pests by promoting and coordinating management and control through integrated pest management techniques, cooperation with landowners, agencies, organizations, and by providing technical expertise and educational opportunities to all within the county.

- Mosquitoes - page 2
- Grasshoppers - page 2
- Prairie dogs - page 2
- Field Certifications - page 2
- Bio-control - page 2
- County Roads - page 3
 - Wy DOT - page 3
- Comped weeds - page 4
 - Coupons - page 4
 - Sprayer use - page 5
 - Time tracking - page 5
- Application Coverages - page 6
 - Programs - page 7
 - Private Lands - page 7
 - BLM - page 8
 - State Land - page 8
 - Forest Service - page 8
- Muddy Guard & Rock Creek Grant - page 8

Annual Mosquito Abatement Program in the Clear Creek Drainage.

We apply larvacide throughout the summer to all mosquito infested water bodies from Buffalo to Ucross and in the City of Buffalo. The larvaciding program has been very successful over the past couple of years with no impact to bees and without the invasiveness of an aerial program. We do have ground fogging equipment, also, if needed and requested if an isolated adult outbreak occurs. In addition to the application in the Clear Creek drainage there is an available county wide cost share program on larvacide.



County Wide Program	Income	Expenses
Grant	\$ 20,000.00	
Donations	\$ 4,175.00	
District Applied Vectobac		\$ 13,652.01
Landowner Applied Vectobac		\$ 7,022.20
District Labor		\$ 10,269.96
Mileage & Equip		\$ 6,907.00
Gas/Oil/Misc		\$ 622.41
Tire Recycling		\$ 1,573.00
Postage/Supplies		\$ 84.92
Totals	\$ 24,175.00	\$ 40,131.50

2011 Grasshopper Treatment and Cost Share

Due to the apparent success of the program in 2010, Grasshopper populations warranted little spraying in 2011. The District administered a small ground treatment program for a few hot spots. The cost for control was \$ 216.21 paid by landowners and the District \$ 864.83 for the year.

2011 Prairie Dog Cost Share

	District	Landowner
53 vials of Fumitoxin	\$ 1,298.50	\$ 0
161 buckets of Rozol	\$ 9,686.29	\$ 1,320.00

2011 Field Certifications

Rod certified fields for 7 hay/straw producers in the County.

2011 Bio Control Cost Share

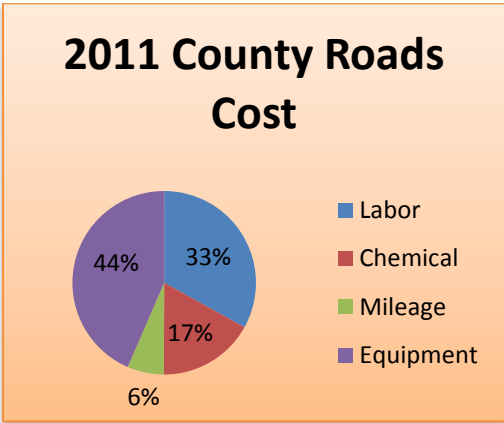
Dalmation Toadflax \$ 233.00

Leafy Spurge \$ 463.83

2011 County Roads

In 2011 the District treated 1,137.5 miles of county roads. Hours of labor equaled 287.5 and equipment hours were 186.8

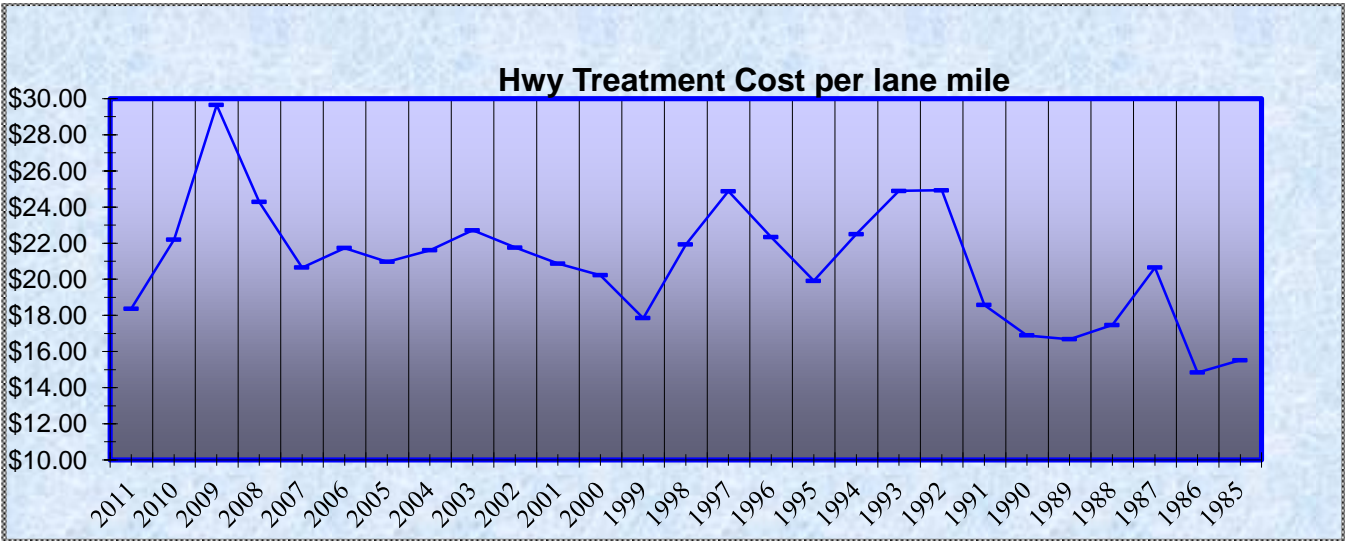
Weeds Treated on County Roads	
Buffalbur	Canada thistle
Common burdock	Common cocklebur
Common mullein	Diffuse knapweed
Field bindweed	Houndstongue
Leafy spurge	Musk thistle
Russian knapweed	Scotch thistle
Puncturevine	Wild licorice
Whitetop	



2011 Co Road Cost	
Labor	\$ 4,449.56
Herbicide	\$ 2,287.92
Mileage	\$ 869.00
Equipment	\$ 5,854.40
Total Cost	\$ 13,460.88

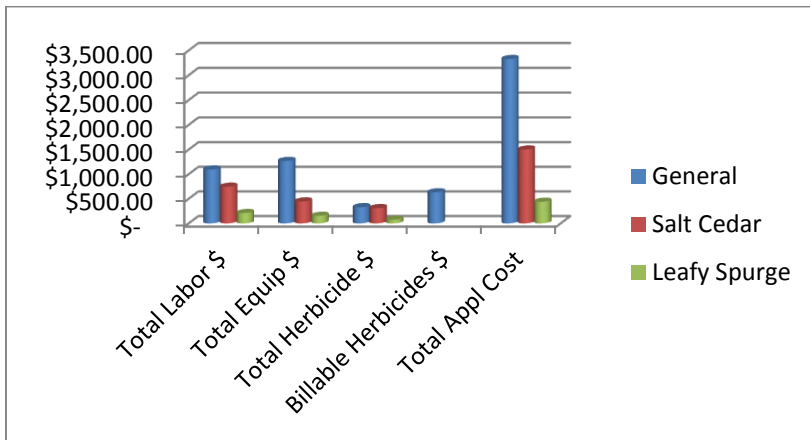
2011 Wyoming Department of Transportation

The District contracts the spraying of the state highways in Johnson County to Back Country Spraying, who was awarded the bid.



2011 County Comp

County Comp includes spraying of county properties, cleanup on private lands and small spray jobs that do not fit in our cost share programs.



District cost share on Designated and Declared weeds is 80/20 with the exception of Leafy spurge, the District pays 100%.

2011 Vendor Coupon Cost Share

	units	District \$	L.O. \$	Total \$
2,4-D	220.75	2,558.94	582.48	3,141.42
2,4-D LV6	2.5	46.93	11.73	58.66
Banvel	12.5	352.80	67.20	420.00
Chaparrel	37.5	2,142.00	535.50	2,677.50
Curtail	22.5	685.35	171.45	856.80
Escort	600	3,762.00	942.00	4,704.00
Forefront	100	3,951.01	988.00	4,939.01
Milestone	36.25	8,119.02	2,186.24	10,305.26
MSM	1000.0	3,570.12	900.00	4,470.12
Opti-Amine	166.000	1,840.68	893.08	2,733.76
Rangestar	3.5	64.86	15.47	80.33
Redeem	10.5	978.39	244.65	1,223.04
Roundup Eql	406	3,826.62	954.10	4,780.72
Telar	8.0	100.32	25.12	125.44
Tordon	512.59	14,967.52	4,363.94	19,331.46
		46,966.56	12,880.96	59,847.52

	Year End Total					
	Gallons	\$	Ounces	\$	pounds	\$
2000	969.5	\$ 28,240.16	99	\$ 911.32		
2001	821.5	\$ 27,835.46	48.5	\$ 480.17		
2002	1080.65	\$ 31,673.24	688.5	\$ 4,838.60		
2003	1108.5	\$ 37,755.81	552	\$ 4,378.80		
2004	1160	\$ 32,933.04	352	\$ 3,751.68		
2005	1518.5	\$ 45,882.36	224	\$ 2,352.00		
2006	1494	\$ 55,580.79	144	\$ 3,012.16		
2007	2042.5	\$ 84,479.28	122	\$ 1,824.24		
2008	2605.8	\$ 99,031.29	1168	\$ 7,414.08		
2009	2078.92	\$ 73,247.49	1776	\$ 8,143.63	41.25	\$ 2,918.89
2010	1667.75	\$ 46,668.22	340	\$ 1,549.20	23.75	\$ 1,582.50
2011	1494.64	\$ 37,534.66	1608	\$ 7,432.44	37.5	\$ 2,142.00

2011 Sprayer use and donations

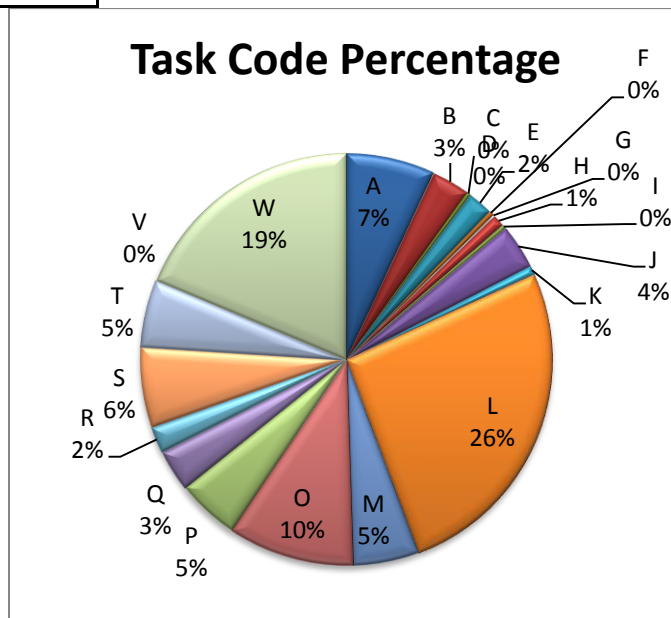
The District has the following list of equipment for use, on a donation basis.

	Days Used	Donation
Live Trap	52	\$ -
Backpack	177	\$ 80.00
150 gallon sprayer - yellow tank	24	\$ 30.00
50 gallon sprayer	5	\$ -
25 g ATV sprayer	98	\$ 10.00
Boom Sprayer 200 g	23	\$ 175.00
55 g Tree Sprayer - Insecticide Only	5	\$ -
Mosquito Fogger	67	\$ -
Totals	451	\$ 295.00

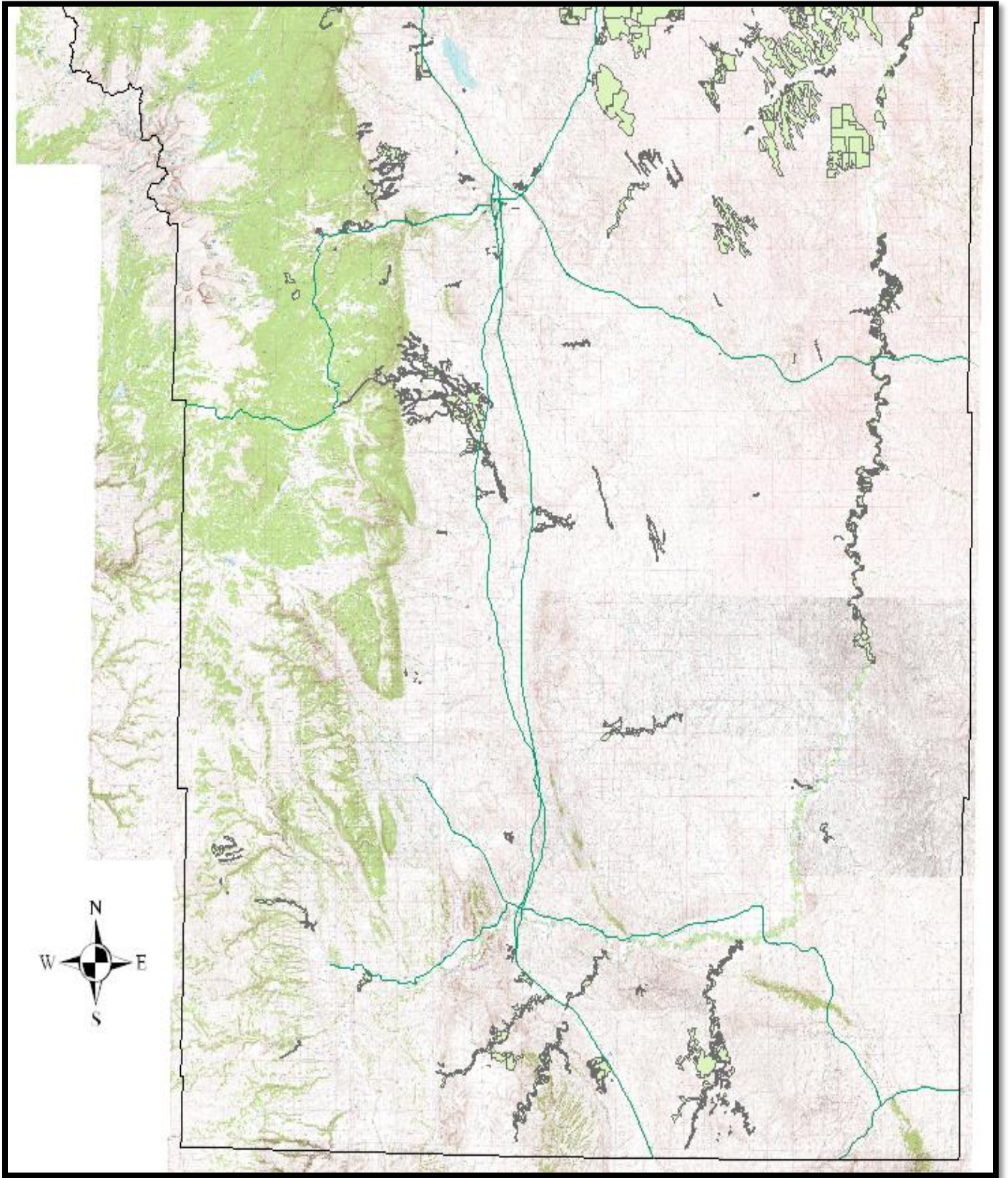
2011 Employees Time Spent

The District has assigned the following task codes in order to track where the employees time is spent. The graph includes all employees time. We also assign labor rates and track each task code for each labor rate. The total labor cost for 2011 was \$ 193,654.96

Code	Task	Code	Task
A	Administrative	L	Leafy Spurge
B	Bonus and Holiday	M	Mosquito
C	County Comp Application	O	Office
D	Data Collection	P	Shop
E	Education	Q	Bookkeeping
F	Customer Relations	R	County Roads
G	GIS	S	Salt Cedar
H	Health	T	Tracking Archives
I	Incomplete day	V	Survey Salt Cedar
J	Personal leave	W	Weed Spraying
K	Kill Prairie Dogs		

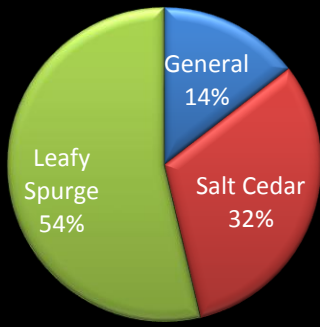


2011 Coverages – 4,817 acres treated - 84,091 acres covered

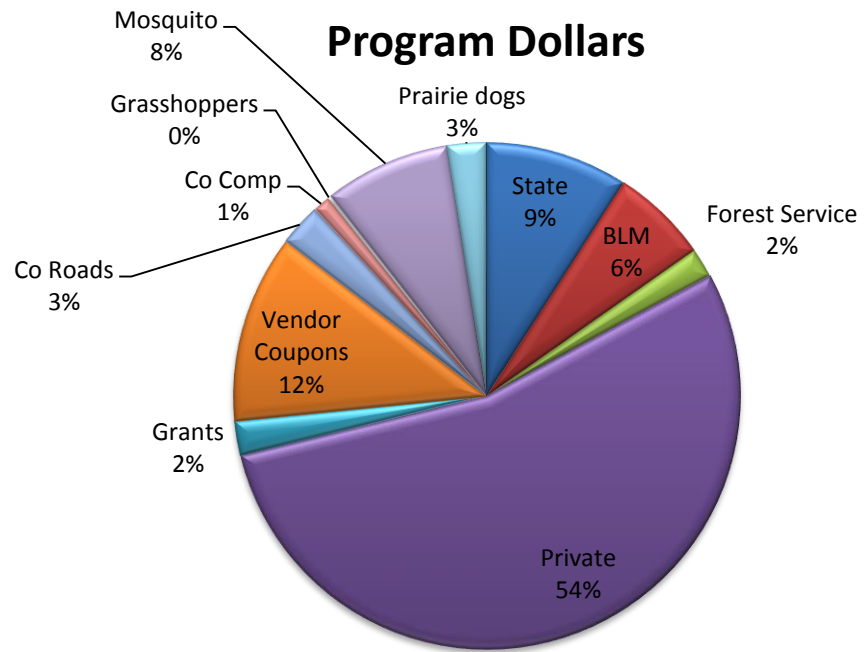


The above map shows the acres covered by the District in 2011. 326 application records were processed during the year. The following graphs show the percentage based on acres of applicatons and program dollars.

Program Percentage



Program Dollars



Private	acres	Labor \$	Equip \$	Herbicide \$	Total \$
General	571.8	\$ 8,705.23	\$ 5,180.40	\$ 9,094.96	\$ 22,980.59
Leafy Spurge	1933.2	\$ 102,787.16	\$ 717.50	\$ 23,732.83	\$ 127,237.49
Salt Cedar	1282.3	\$ 27,569.63	\$ 19,562.50	\$ 71,492.22	\$ 118,624.35
Totals	3787.3	\$ 139,062.02	\$ 25,460.40	\$ 104,320.01	\$ 268,842.43

Government Agencies

2011 Bureau of Land Management

BLM	acres	Labor \$	Equip \$	Herbicide \$	Total \$
General	40	\$ 4,014.63	\$ 1,101.25	\$ 513.26	\$ 5,629.14
Leafy Spurge	107	\$ 12,357.22	\$ 61.00	\$ 2,328.76	\$ 14,746.98
Salt Cedar	84.5	\$ 4,732.70	\$ 525.00	\$ 5,131.82	\$ 10,389.52
Totals	231.5	\$ 21,104.55	\$ 1,687.25	\$ 7,973.84	\$ 30,765.64

2011 State Lands

State	acres	Labor \$	Equip \$	Herbicide \$	Total \$
General	17	\$ -	\$ -	\$ 323.80	\$ 323.80
Leafy Spurge	443	\$ 26,200.00	\$ 1,584.40	\$ 5,101.39	\$ 32,885.79
Salt Cedar	134	\$ 3,940.03	\$ 1,127.00	\$ 6,950.45	\$ 12,017.48
Totals	594	\$ 30,140.03	\$ 2,711.40	\$ 12,375.64	\$ 45,227.07

2011 Forest Service

Forest Service	acres	Labor \$	Equip \$	Herbicide \$	Total \$
General	25	\$ 5,969.27	\$ 599.00	\$ 445.05	\$ 7,013.32
Leafy Spurge	8	\$ 1,883.62	\$ 178.50	\$ 161.28	\$ 2,223.40
Totals	33	\$ 7,852.89	\$ 777.50	\$ 606.33	\$ 9,236.72

2011 Muddy Guard Grant and Rock Creek Grant

Muddy Guard Grant	acres	District \$	L.O. \$	Grant \$	Rock Creek Grant	acres	District \$	L.O. \$	Grant \$
Crazy Woman Ranch	26	1,529.42	382.36	1,290.00	Bud Love	10	0.00	0.00	1,186.74
Crossingham	12	897.09	224.27	780.00	Steerhead	23	1,356.07	339.02	813.26
Leitchman	1	121.86	30.47	90.00	Totals	33	1,356.07	339.02	2,000.00
LZ Ranch	4	321.26	130.32	450.00					
Neltje	5	462.02	115.50	390.00					
Totals	48	3,331.65	882.92	3,000.00					

Johnson County Weed and Pest Control District

www.jcweedandpest.com