

2011 Virtual Tour

Activity Update
Johnson County Weed & Pest

Programs & Projects

- ▣ Whitetop
- ▣ Coupons
- ▣ Rock Creek Grant
- ▣ Muddy Creek Grant
- ▣ FS & BLM
- ▣ S. thistle, Knapweed
- ▣ Prairie dogs
- ▣ Mosquitoes
- ▣ Education programs
- ▣ Field Certifications
- ▣ County Roads
- ▣ Comped weeds/pests
- ▣ Salt cedar
- ▣ Bio-control
- ▣ Spurge treatment
- ▣ GIS
- ▣ Equipment upgrades
- ▣ Wy DOT
- ▣ Russian Olive

Funding

FY 10/11	General	Leafy Spurge
Total Budgeted	\$3,249,511.00	\$2,275,215.00
Actual Income	\$3,503,048.52	\$2,355,567.30
Actual Expenses	\$932,785.34	\$416,043.94
Emergency Reserve	\$2,000,000.00	\$1,500,000.00
Carryover to FY 11/12	\$570,263.18	\$439,523.36

Expenses Breakdown

FY 10/11	LS/SC	General	Total	Percentage
Admin	\$57,031.06	\$55,129.06	\$112,160.12	8.3%
Seasonal crews	\$58,518.96	\$59,863.43	\$118,382.39	8.8%
Office	\$0	\$16,942.88	\$16,942.88	1.2%
Operating	\$0	\$50,244.54	\$50,244.54	3.7%
Programs	\$300,493.92	\$706,397.96	\$1,006,891.80	74.7%
Other	\$0	\$12,109.77	\$12,109.77	0.9%
Insurance	\$0	\$2,709.00	\$2,709.00	0.2%
Cap outlay	\$0	\$29,388.70	\$29,388.70	2.2%
TOTAL	\$416,043.94	\$932,785.34	\$1,348,829.20	

Expense breakdown- previous year

FY 09/10	LS/SC	General	Total	Percentage
Admin	\$50,604.88	\$52,800.68	\$103,405.56	4.2%
Seasonals	\$43,726.99	\$72,583.18	\$116,310.17	4.6%
Office	-0-	\$13,974.28	\$13,974.28	0.6%
Operating	-0-	\$54,267.46	\$54,267.46	2.2%
Programs	\$177,544.55	\$1,992,192	\$2,169,736	86.2%
Other	-0-	\$9,017.83	\$9,017.83	0.4%
Insurance	-0-	\$5,038.75	\$5,038.75	0.2%
Cap Outlay	-0-	\$41,551.92	\$41,551.92	1.6%
TOTAL	\$271,876.42	\$2,241,625	\$2,513,502	

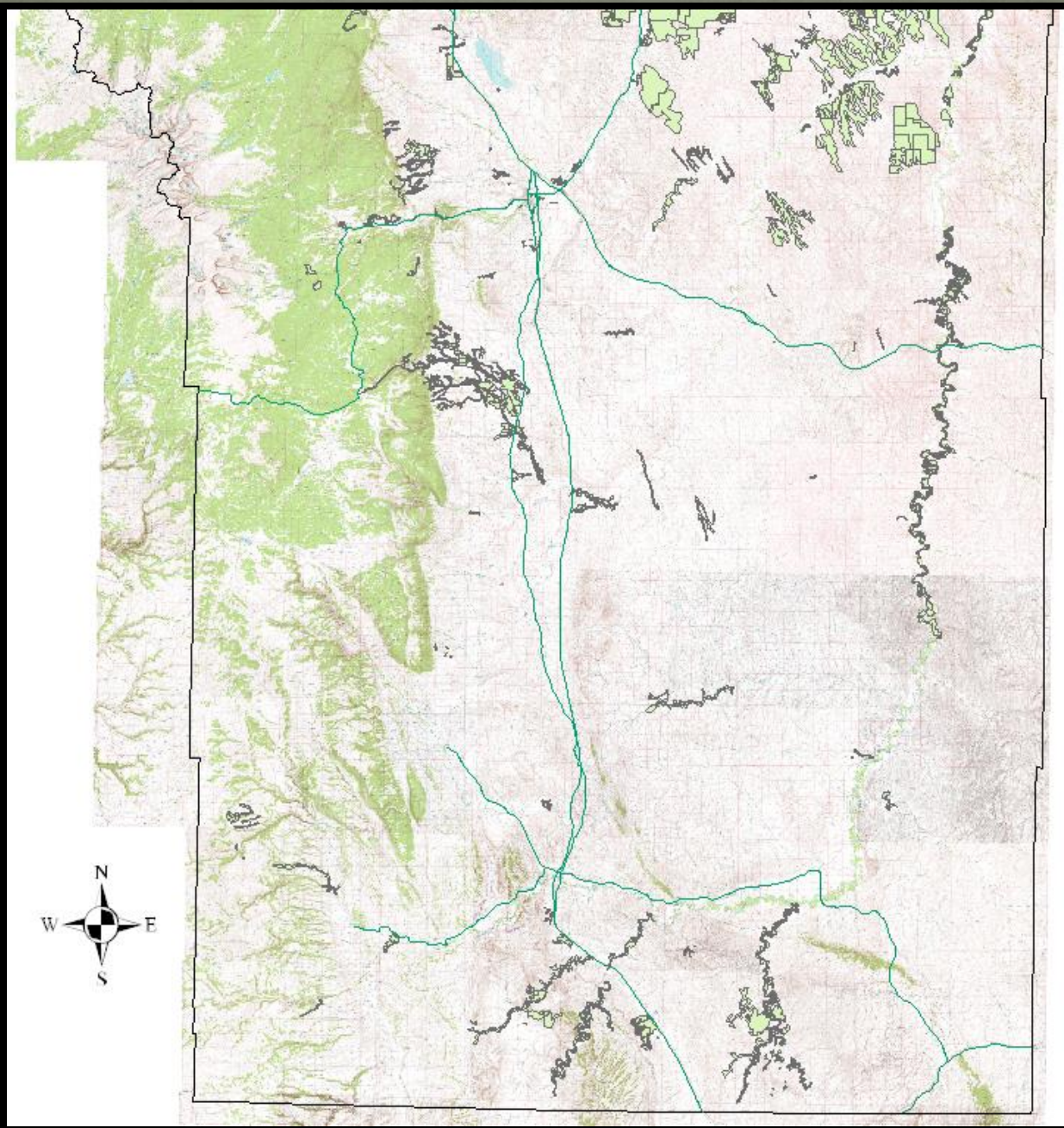
Points to compare yearly expenses

- Cost of insurance went up significantly and added to admin cost driving that cost up instead of insurance
- Operating costs went down, which includes fuel, warehouse supplies, equipment repair and equipment leases.
- Other includes building improvements, utilities, postage, freight, and sales tax.
- Office expenses include out of town meeting costs, Council dues, advertising, office equipment repair & supplies, and education or PR costs.
- Capital outlay costs went down
- Big grasshopper program in 2010 drove up program cost that year.

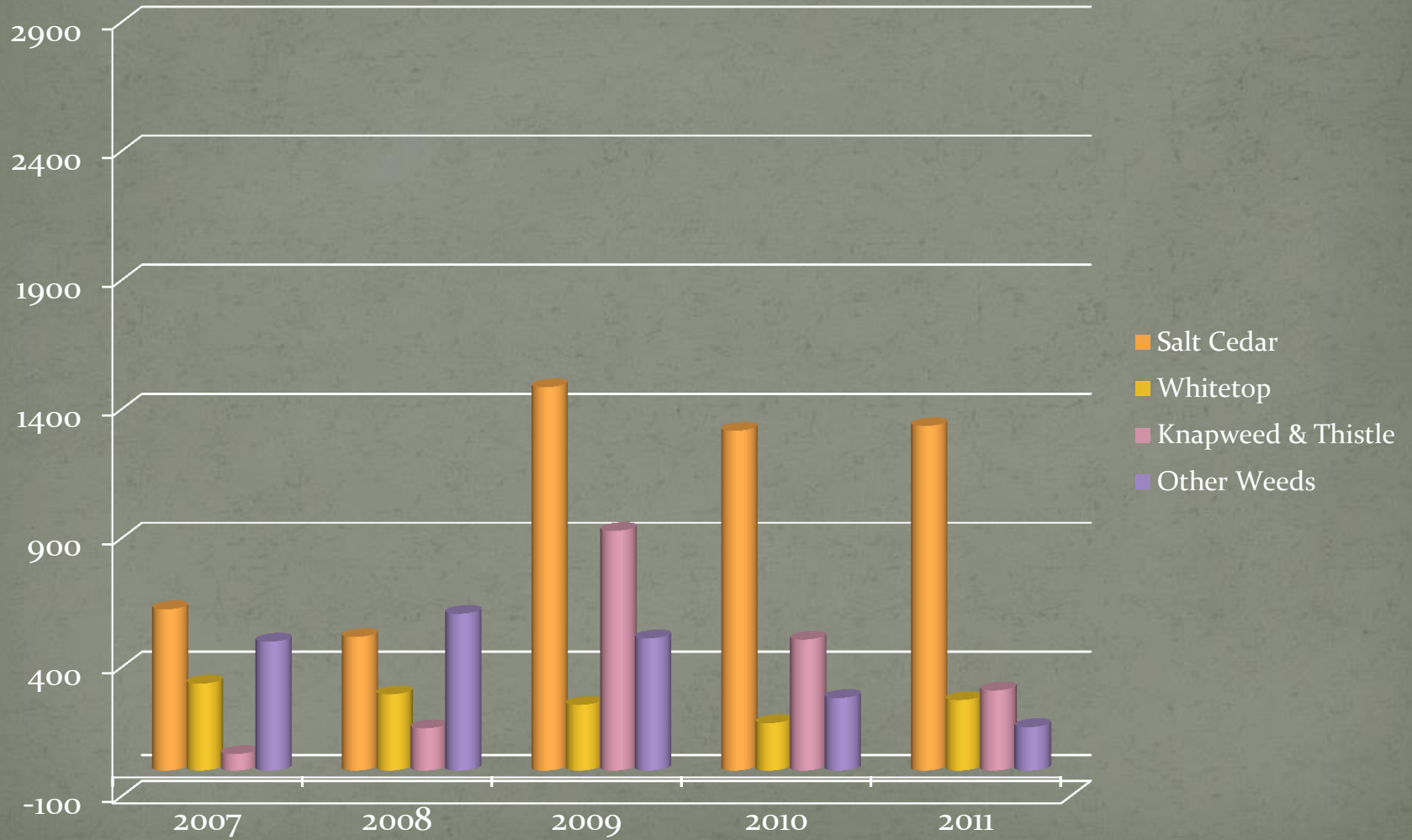
2011 Coverages

Acres treated- 4,817

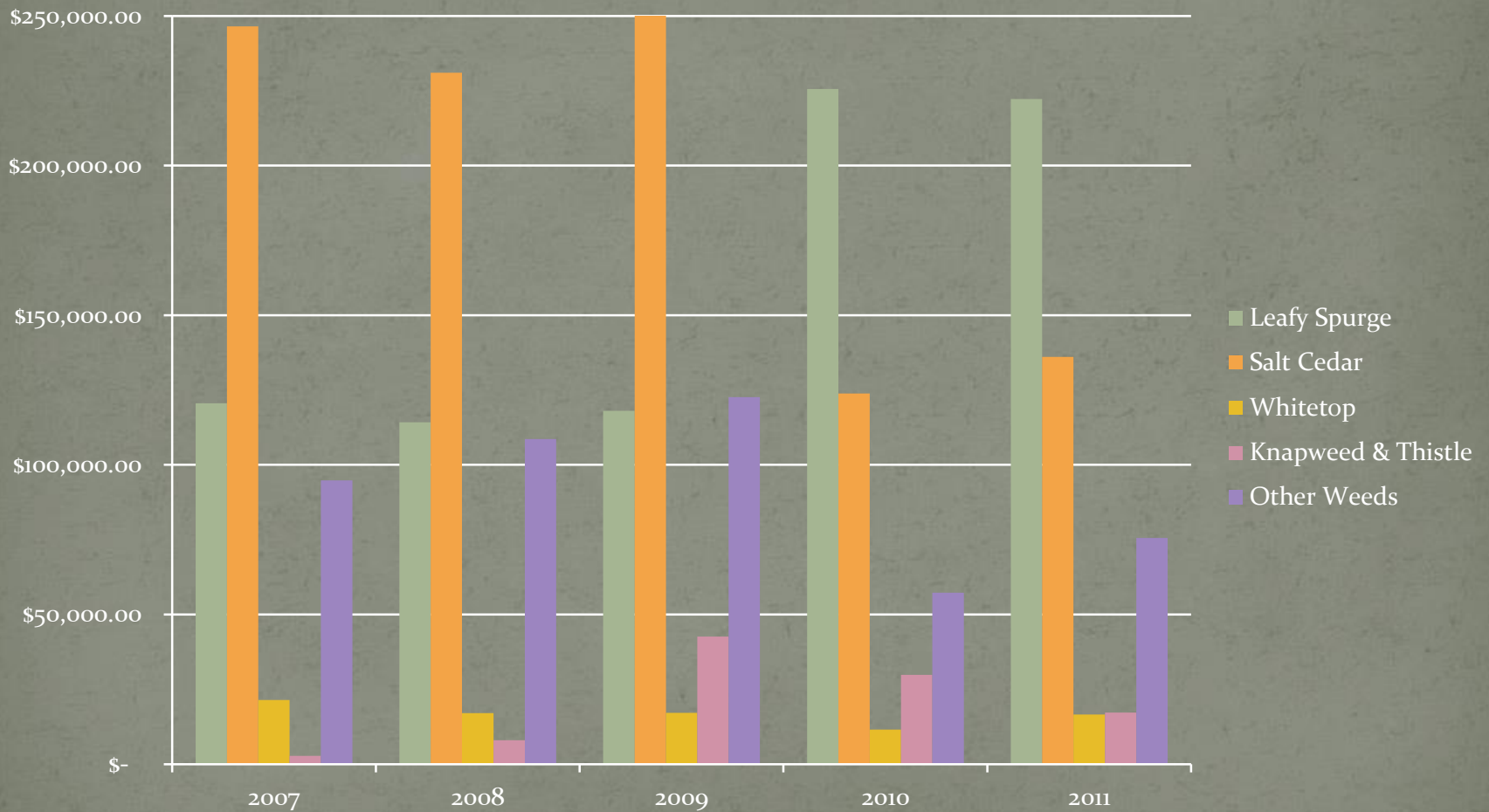
Acres covered- 84,091



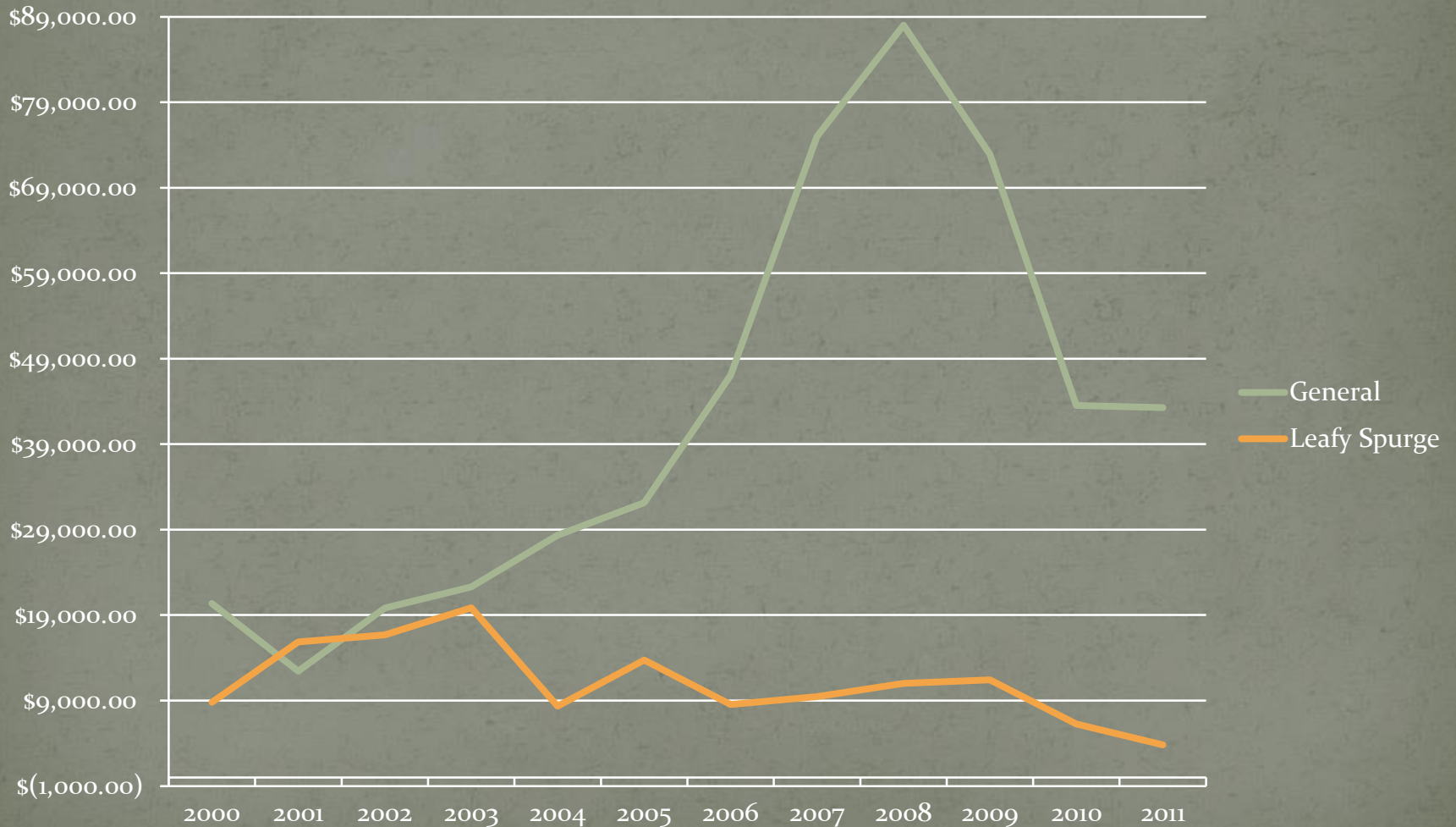
Acres treated by Year



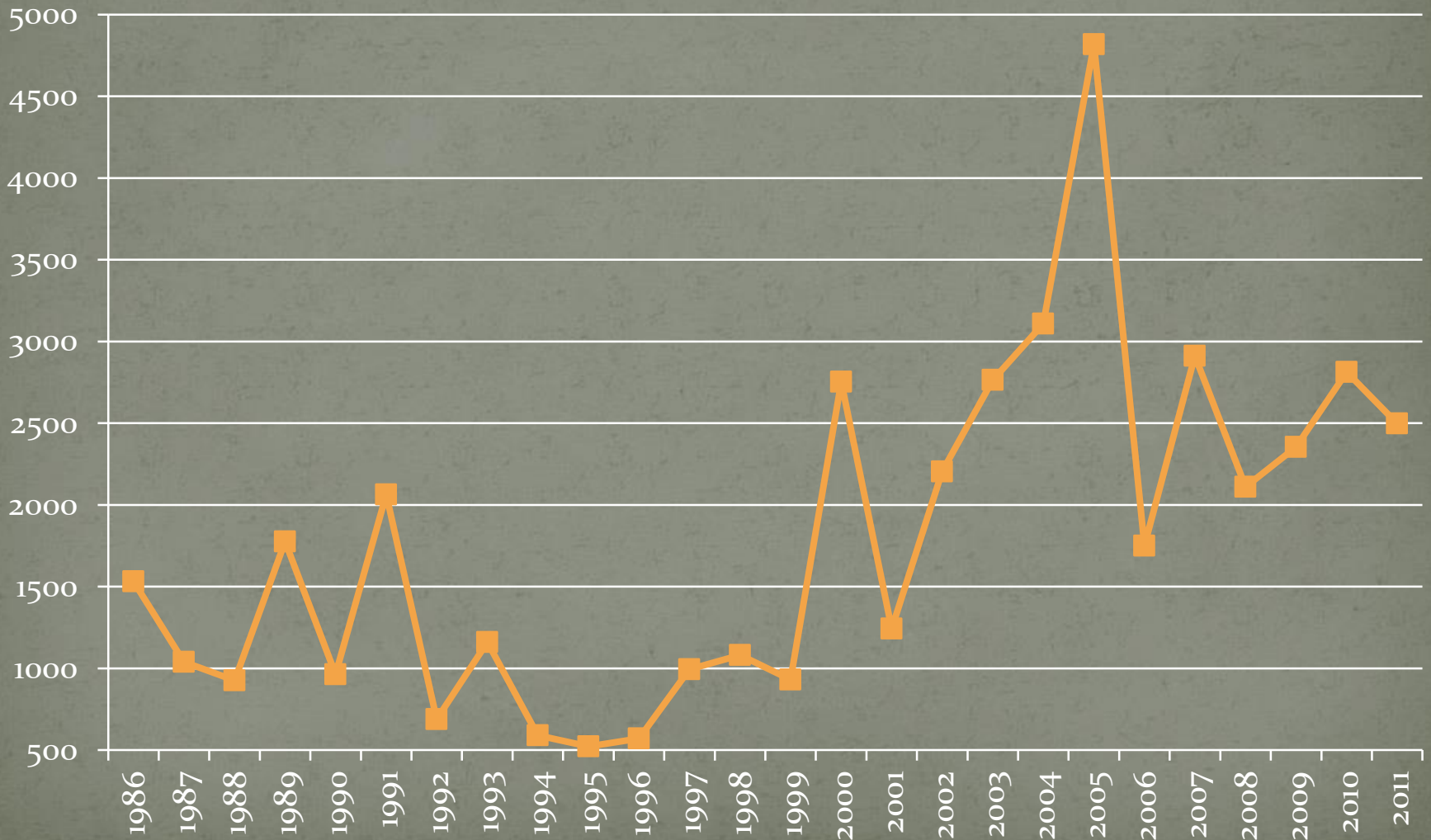
Dollars spent per year by weed



Vendor Coupons Issued



Leafy Spurge Acres Treated



Crew dynamics

- Mosquito technician-one man
- 5 man foot crew with ATV
- 5 man foot crew without ATV
- Rover- treated county roads, some grasshoppers and filled in where needed
- Two man ATV crew for range work
- Contract helicopter for spurge and salt cedar
- Contract crew for DOT contract
- Contract ATV crew for salt cedar
- Me

College kids “Spring break” hand cutting and treating salt cedar.



The crew in camp before heading out for the 3rd and final day of treating larkspur.



Tall larkspur treatment area



Believe it or not this was solid larkspur 2 years prior

One of our first insect release sites on leafy spurge in the early 1990's



As viewed in June 2012. this area has only been treated with herbicides
A couple times since release. Insects effectively managing the infestation.

North end Powder River uncut, aerially treated.



Some re-growth from root crown, 1 yr after treatment.

North end of Powder River, had been cut, re-growth sprayed aerially.



Can't tell in photo but there is about 20% re-growth, 1 yr after treatment



Close up shot of area in previous slide

Scotch thistle control one year after treatment



This site was actually solid thistle 5 feet tall across this draw the year prior



Impressive skills of aerial applicator spraying Salt cedar on Salt Creek

Aerial treatment of re-grown salt cedar post cutting.





Vacation Sunrise!